



SCHEMATIC DESIGN UPDATE

STEM EDUCATION BUILDING

NORTHEAST LAKEVIEW COLLEGE

JUNE 13, 2018



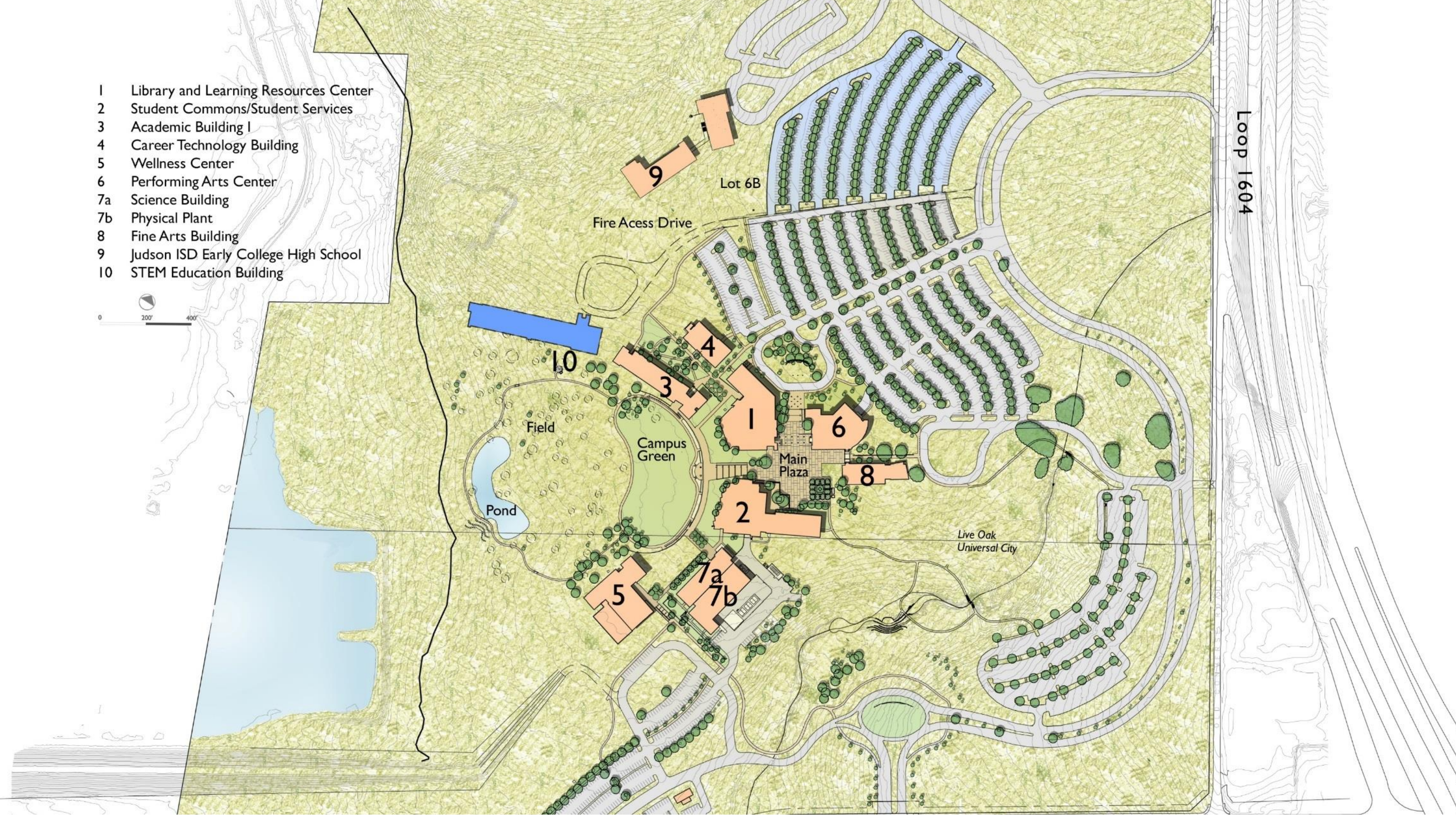
PREVIOUSLY PRESENTED MASSING OPTIONS

STEM EDUCATION BUILDING

NORTHEAST LAKEVIEW COLLEGE

JUNE 13, 2018

- 1 Library and Learning Resources Center
- 2 Student Commons/Student Services
- 3 Academic Building I
- 4 Career Technology Building
- 5 Wellness Center
- 6 Performing Arts Center
- 7a Science Building
- 7b Physical Plant
- 8 Fine Arts Building
- 9 Judson ISD Early College High School
- 10 STEM Education Building



OPTION A

- 1 Library and Learning Resources Center
- 2 Student Commons/Student Services
- 3 Academic Building I
- 4 Career Technology Building
- 5 Wellness Center
- 6 Performing Arts Center
- 7a Science Building
- 7b Physical Plant
- 8 Fine Arts Building
- 9 Judson ISD Early College High School
- 10 STEM Education Building



OPTION B



STEM EDUCATION BUILDING

NORTHEAST LAKEVIEW COLLEGE

JUNE 13, 2018

- 1 Library and Learning Resources Center
- 2 Student Commons/Student Services
- 3 Academic Building I
- 4 Career Technology Building
- 5 Wellness Center
- 6 Performing Arts Center
- 7a Science Building
- 7b Physical Plant
- 8 Fine Arts Building
- 9 Judson ISD Early College High School
- 10 STEM Education Building



OPTION C : APPROVED OPTION

STEM EDUCATION BUILDING

NORTHEAST LAKEVIEW COLLEGE

JUNE 13, 2018





OPTION C

STEM EDUCATION BUILDING

NORTHEAST LAKEVIEW COLLEGE

JUNE 13, 2018



OPTION C

STEM EDUCATION BUILDING

NORTHEAST LAKEVIEW COLLEGE

JUNE 13, 2018



OPTION C

STEM EDUCATION BUILDING

NORTHEAST LAKEVIEW COLLEGE

JUNE 13, 2018



OPTION C

STEM EDUCATION BUILDING

NORTHEAST LAKEVIEW COLLEGE

JUNE 13, 2018

DEDICATED CROSSING
FROM JUDSON ISD EARLY
COLLEGE HIGH SCHOOL

CARPOOL LANE/DROP
OFF + FIRE LANE
CONFIGURATION

ACCESS

ACCESS

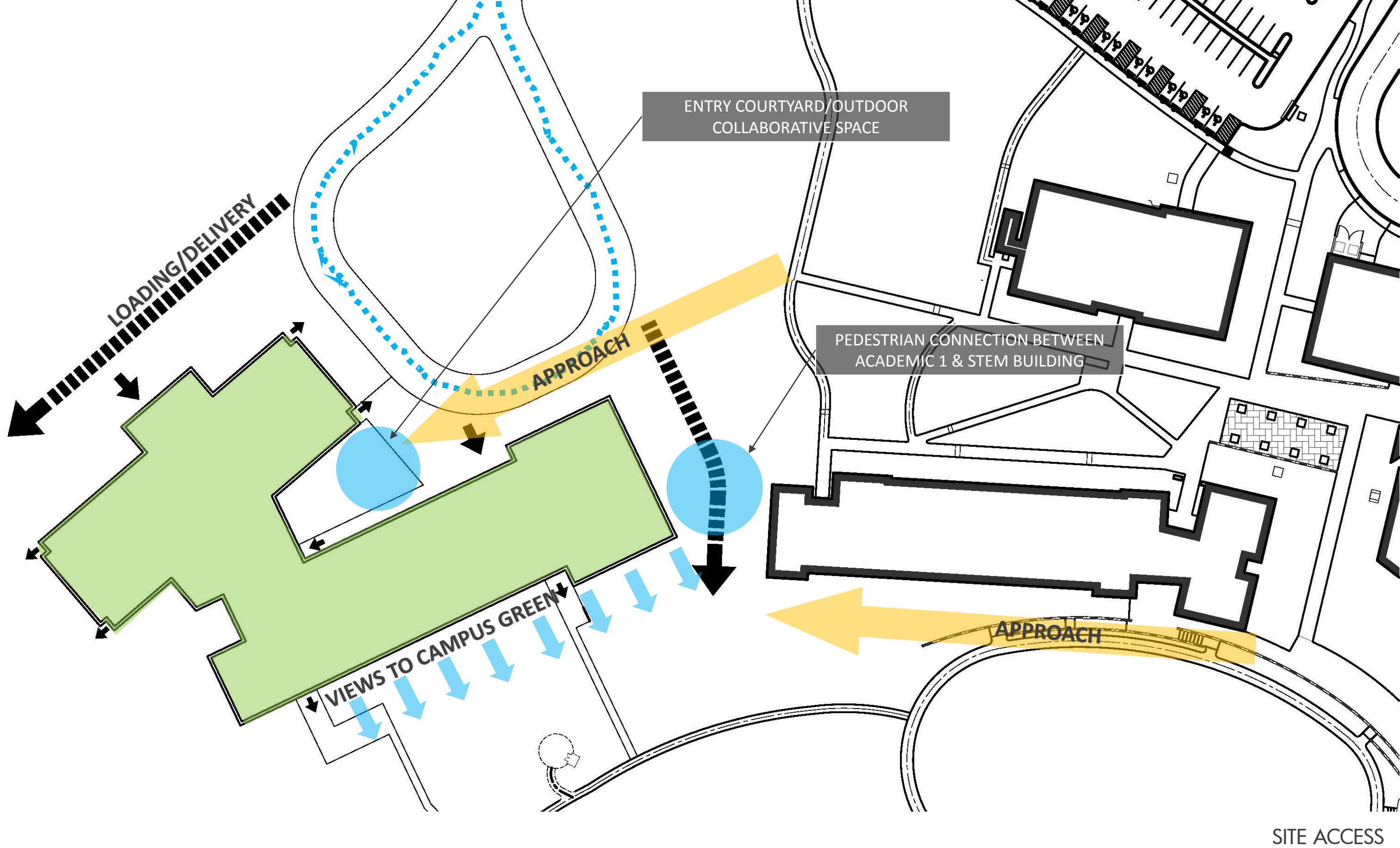
SITE ACCESS



STEM EDUCATION BUILDING

NORTHEAST LAKEVIEW COLLEGE

JUNE 13, 2018



ENTRY COURTYARD/OUTDOOR COLLABORATIVE SPACE

PEDESTRIAN CONNECTION BETWEEN ACADEMIC 1 & STEM BUILDING

LOADING/DELIVERY

APPROACH

VIEWS TO CAMPUS GREEN

APPROACH

SITE ACCESS

SCHEMATIC DESIGN FLOOR PLAN UPDATE

STEM EDUCATION BUILDING

NORTHEAST LAKEVIEW COLLEGE

JUNE 13, 2018



Detailed Building Space List

Note: Detailed information for each space is provided in Chapter 4.

Alamo Colleges - Northeast Lakeview College STEM Education Building Final Space List	Proposed Spaces		Number of Occupants	Space Type	Page No.
	No. and Size of Space(s)	ASF			
Teaching Spaces					
<i>General Classrooms</i>					
Classrooms	9 @ 875 asf	7,875	35 Students	TS-01	4.12
Classroom and Computer Lab Shared Storage Room	1 @ 500 asf	500	NA	TS-02	4.14
<i>General Classroom Spaces</i>		8,375			
<i>STEM</i>					
Theatre Style Classroom	1 @ 2,000 asf	2,000	75 Students	TS-03	4.16
Associated Storage Room (Shared with Classroom Storage)	0 @ 0 asf	0	NA	TS-02	4.14
Computer Labs	4 @ 1,000 asf	4,000	35 Students	TS-04	4.18
Associated Storage Room (Shared with Classroom Storage)	0 @ 0 asf	0	NA	TS-02	4.14
Flexible Classroom (Divisible by 4)	1 @ 2,700 asf	2,700	100	TS-05	4.20
Associated Storage Room (A&M)	1 @ 200 asf	200	NA	TS-06	4.22
Technical Lab/ Studio	2 @ 1,700 asf	3,400	20 Students	TS-07	4.24
Lab Prep Space	1 @ 400 asf	400	NA	TS-08	4.26
Technical Lab/ Studio	1 @ 1,500 asf	1,500	20 Students	TS-09	4.28
Lab Prep Space	1 @ 200 asf	200	NA	TS-10	4.30
<i>STEM Spaces</i>		14,400			
<i>Science</i>					
Chemistry Labs (Organic, Intro, Gen 1 & Gen 2)	4 @ 1,300 asf	5,200	24 Students	TS-11/TS-12	4.32/4.34
Instrumentation Room	1 @ 400 asf	400	NA	TS-13	4.36
Chemical Storage	1 @ 200 asf	200	NA	TS-14	4.37
Chemistry Research Lab	1 @ 300 asf	300	NA	TS-15	4.38
Adjacent Student Work Area	1 @ 80 asf	80	NA	TS-16	4.39
Bio Chem Lab	1 @ 1,300 asf	1,300	NA	TS-17	4.40
Shared Science Prep Rooms	2 @ 400 asf	800	NA	TS-18	4.42
Lab Tech Office	2 @ 110 asf	220	NA	TS-19	4.43
Physics Lab	1 @ 1,300 asf	1,300	24 Students	TS-20	4.44
Prep Room	1 @ 150 asf	150	NA	TS-21	4.46
Geology Lab (Built-in Cabinetry)	1 @ 1,300 asf	1,300	30 Students	TS-22	4.48
Geology Storage / Prep	1 @ 150 asf	150	NA	TS-23	4.50
Tutorial Center	1 @ 1,000 asf	1,000	30 Students	TS-24	4.52
<i>Science Spaces</i>		12,400			
<i>Subtotal for Teaching Spaces</i>		35,175			
Faculty Spaces					
<i>STEM Advising Suite</i>					
Chair Office	2 @ 180 asf	360	1 + 4 Guests	FS-01	4.56
Admin Assistants	2 @ 64 asf	128	1	FS-02	4.57
Associated Student Waiting	1 @ 100 asf	100	4	FS-03	4.58
Faculty Office	22 @ 110 asf	2,420	1 + 1 Guest	FS-04	4.59
Conference Room	2 @ 400 asf	800	15 Guests	FS-05	4.60
Shared Workroom	1 @ 300 asf	300	NA	FS-06	4.61
Adjunct Faculty Office	1 @ 400 asf	400	10 to 12	FS-07	4.62
<i>Subtotal for Faculty Spaces</i>		4,508			
<i>Suite Circulation</i>		1,127			
<i>Subtotal for Faculty Spaces and Circulation</i>		5,635			

Detailed Building Space List (Continued)

Note: Detailed information for each space is provided in Chapter 4.

Alamo Colleges - Northeast Lakeview College STEM Education Building Final Space List	Proposed Spaces		Number of Occupants	Space Type	Page No.
	No. and Size of Space(s)	ASF			
Shared Building Spaces					
<i>Meeting Spaces</i>					
Flexible Meeting Room	1 @ 4,400 asf	4,400	200 Guests	BS-01	4.64
Associated Storage Room	1 @ 250 asf	250	NA	BS-02	4.68
Catering Area	1 @ 250 asf	250	NA	BS-03	4.69
AV Control Room	1 @ 100 asf	100	NA	BS-04	4.70
Student Sticky Spaces	10 @ 75 asf	750	2 to 3 Students	BS-05	4.71
Private Meeting / Consultation Spaces	4 @ 100 asf	400	2 to 4 Persons	BS-06	4.72
<i>Meeting Spaces</i>		6,150			
<i>Support Spaces</i>					
Faculty Breakroom	1 @ 400 asf	400	20 Faculty / Staff	BS-07	4.74
Student Breakroom	1 @ 200 asf	200	10 to 15 Students	BS-08	4.76
Lactation Room	1 @ 120 asf	120	1 Guest	BS-09	4.77
Family / Unisex Restroom	2 @ 60 asf	120	NA	BS-10	4.78
Loading Dock / Delivery Bay	1 @ 500 asf	500	NA	BS-11	4.79
<i>Support Spaces</i>		1,340			
<i>Subtotal for Shared Building Spaces</i>		7,490			
<i>Total Assignable Square Footage of Building Spaces</i>		48,300			
<i>Total Building Spaces (GSF @ 60% Efficiency)</i>		80,500			



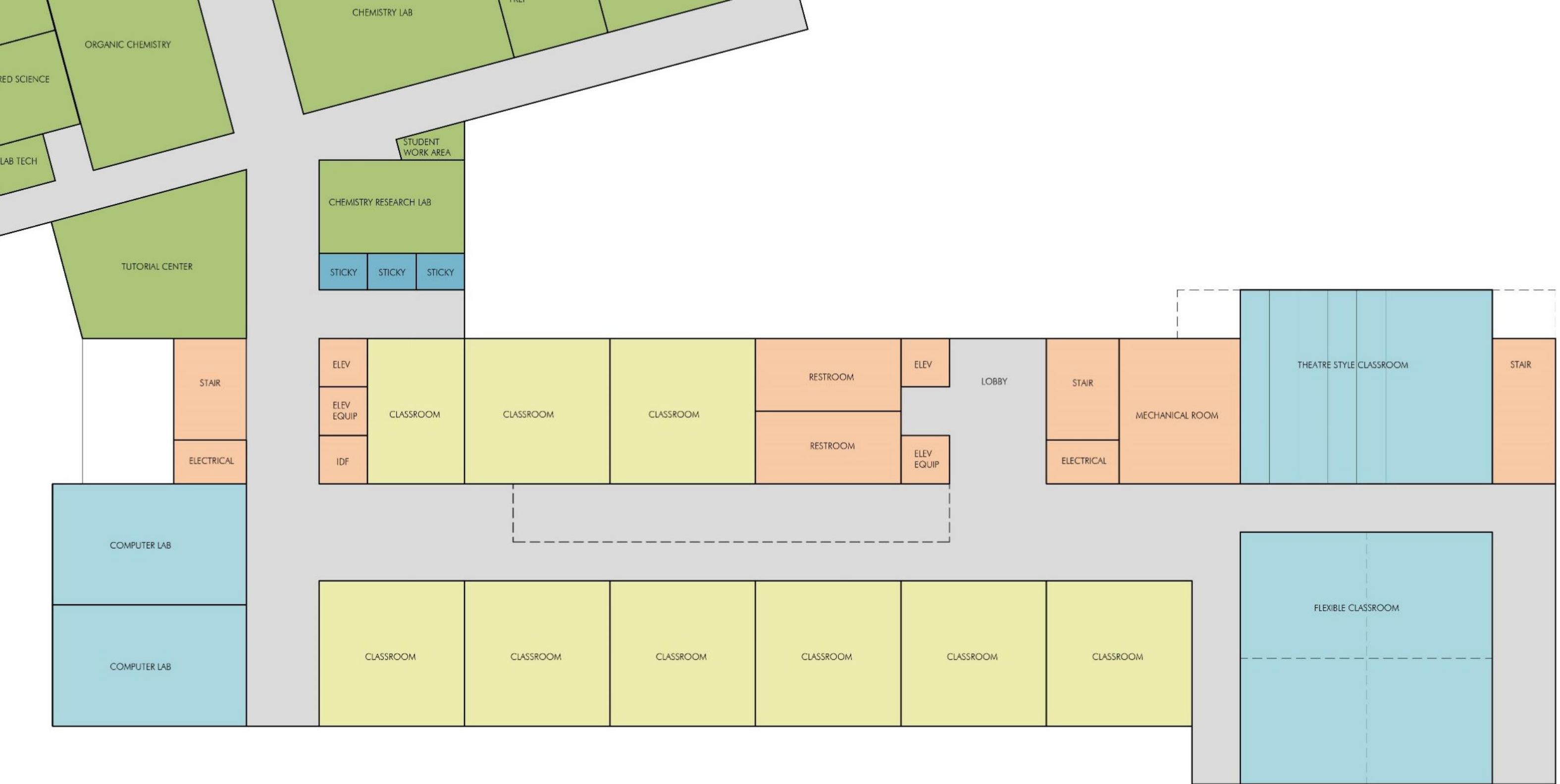
LEVEL 1





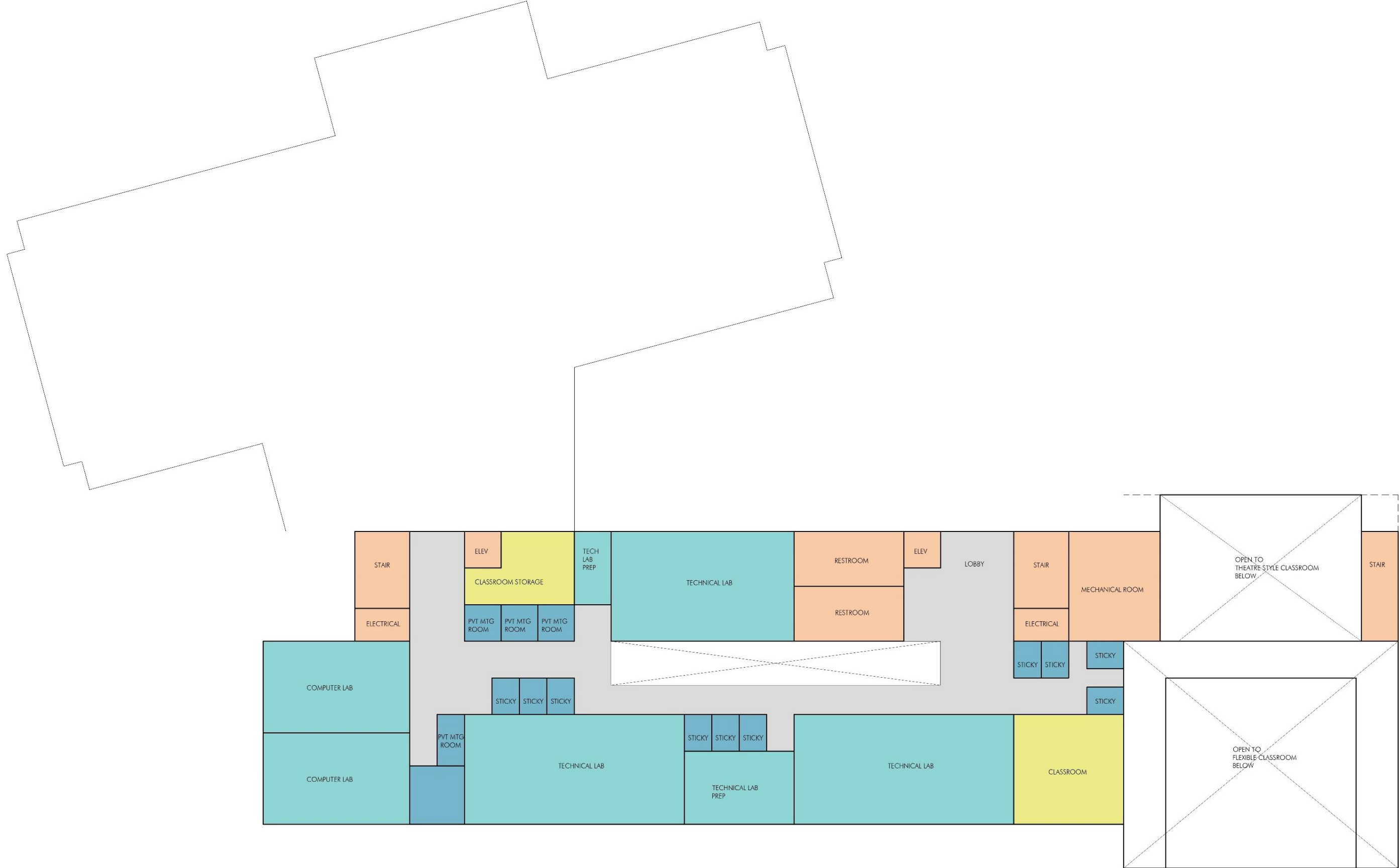
LEVEL 1 (ENLARGED)





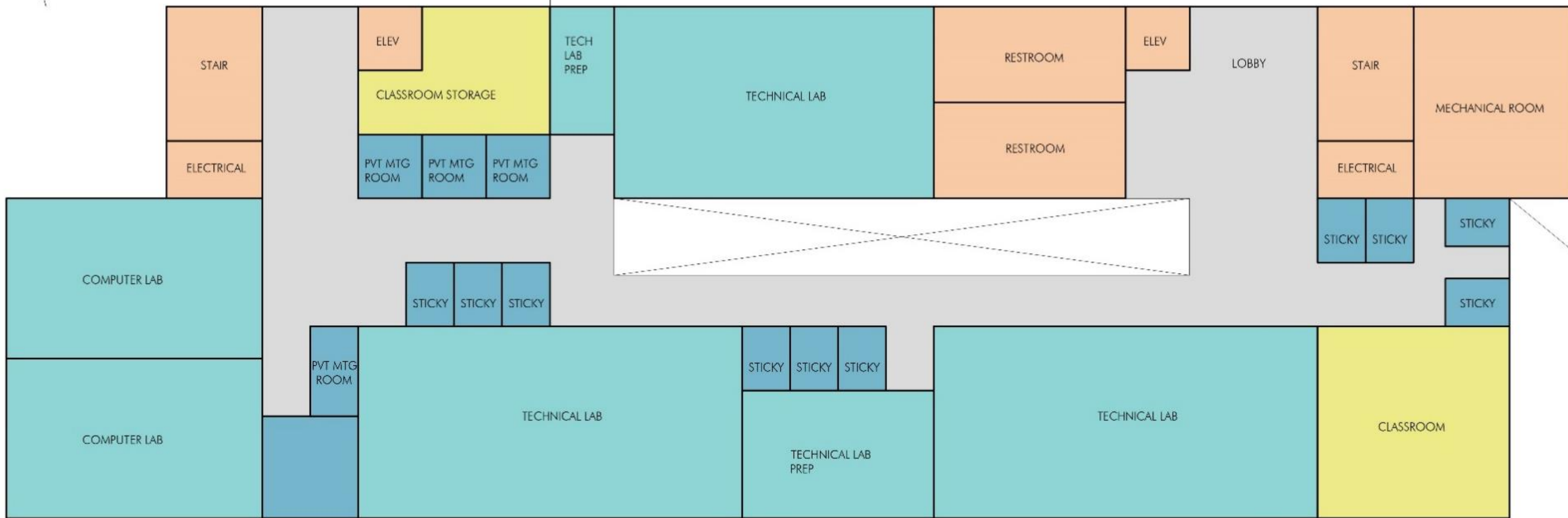
LEVEL 1 (ENLARGED)





LEVEL 2





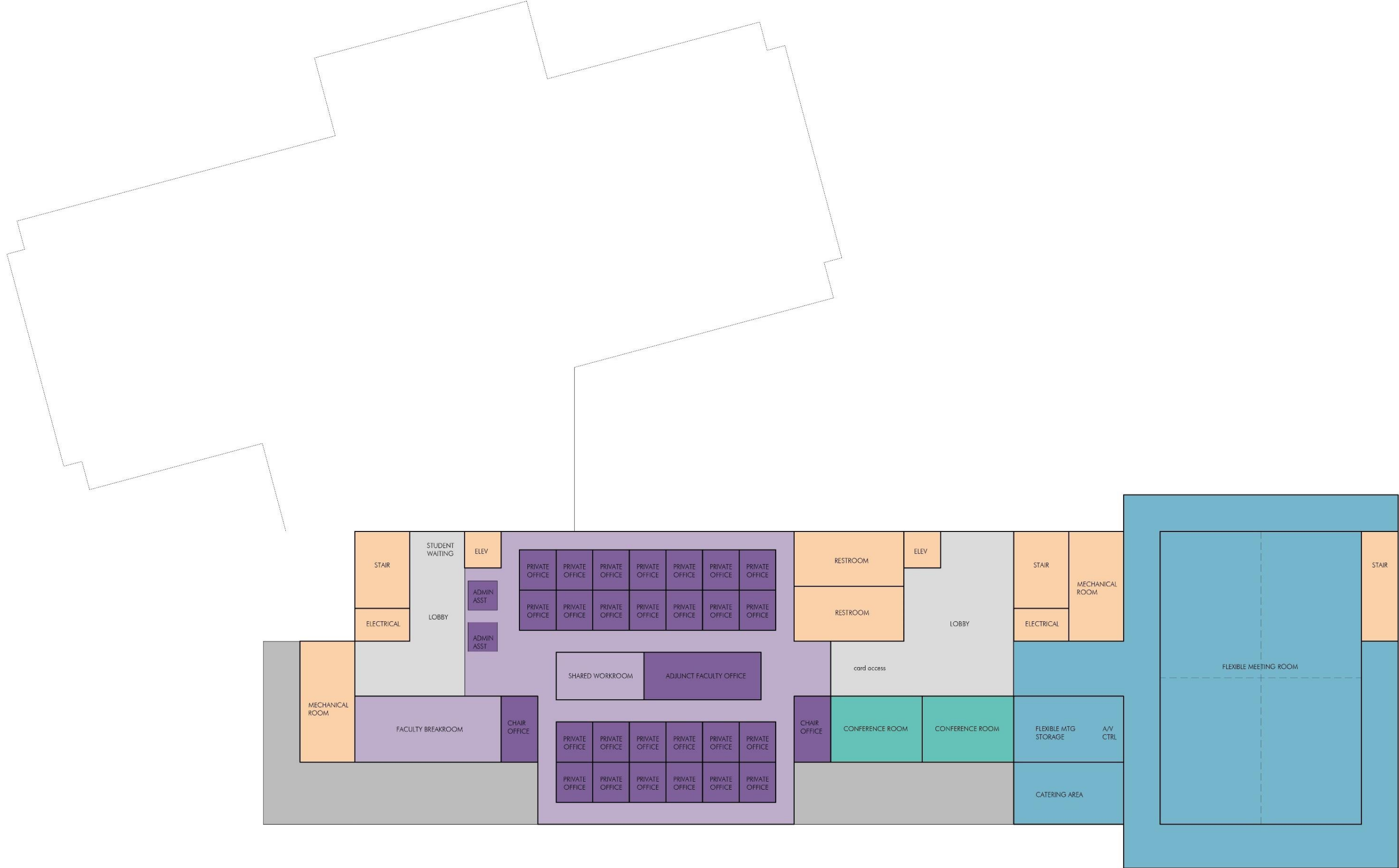
LEVEL 2 (ENLARGED)





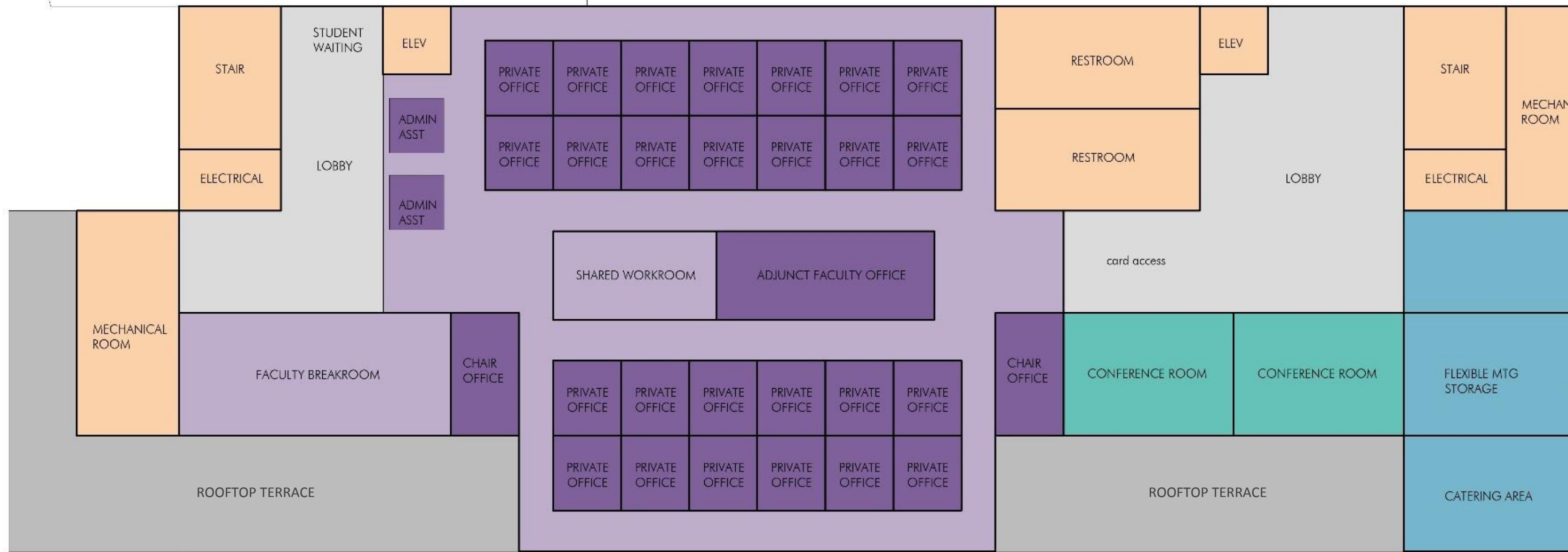
LEVEL 2 (ENLARGED)





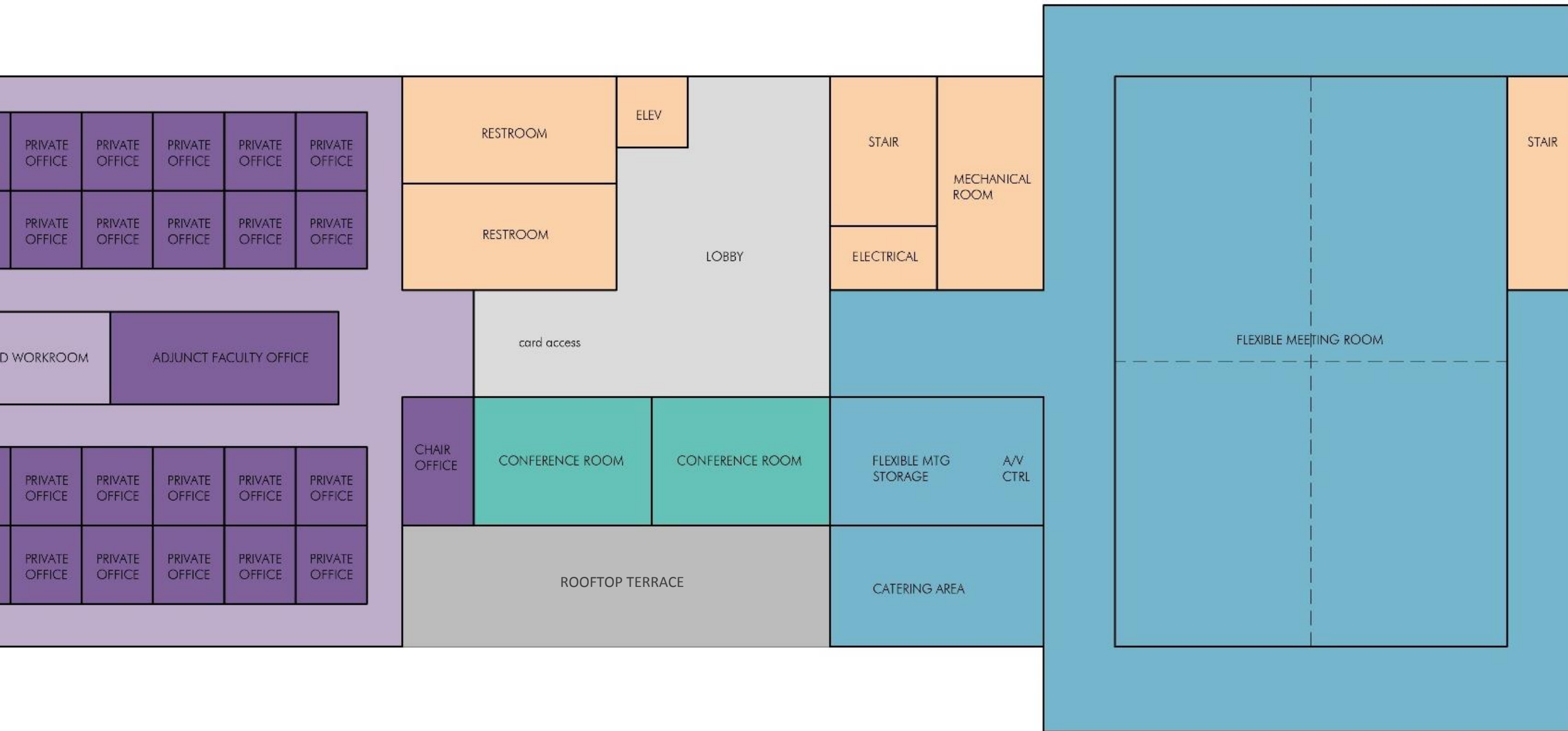
LEVEL 3





LEVEL 3 (ENLARGED)





LEVEL 3 (ENLARGED)





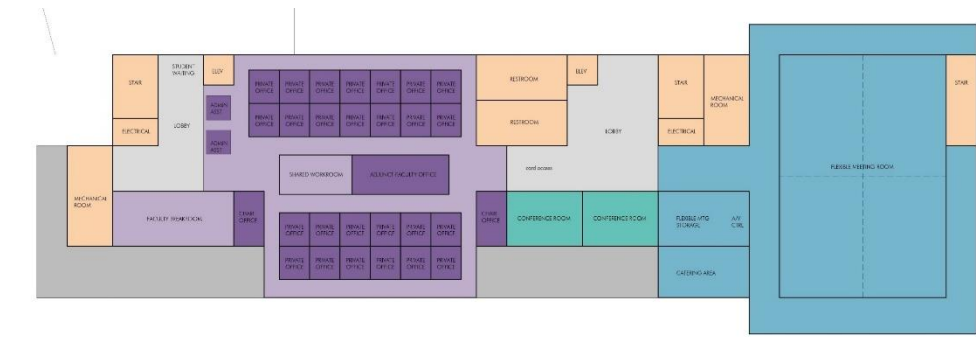
LEVEL 1:

- (5) CHEMISTRY LABS w/ SHARED PREP
- LAB TECH OFFICES
- PHYSICS LAB w/ SHARED PREP
- GEOLOGY LAB w/ SHARED PREP
- TUTORIAL CENTER
- CHEMISTRY RESEARCH LAB & STUDENT WORK AREA
- INSTRUMENTATION & CHEMICAL STORAGE
- (9) CLASSROOMS
- (3) STICKY SPACES
- (2) COMPUTER LABS
- THEATRE STYLE CLASSROOM
- FLEXIBLE CLASSROOM
- LOADING/DELIVERY
- BUILDING SUPPORT SPACES



LEVEL 2:

- (3) TECHNICAL LABS w/ SHARED PREP
- (2) COMPUTER LABS
- (4) PRIVATE MTG ROOMS
- (10) STICKY SPACES
- STUDENT LOUNGE
- CLASSROOM
- (9) CLASSROOM STORAGE
- BUILDING SUPPORT SPACES



LEVEL 3:

- (26) FACULTY OFFICES
- (2) CHAIR OFFICES
- ADJUNCT FACULTY OFFICE
- ADMIN ASSISTANTS
- SHARED WORKROOM
- FACULTY BREAKROOM
- (2) SHARED CONFERENCE ROOMS
- FLEXIBLE MEETING STORAGE & A/V CONTROL
- CATERING AREA
- FLEXIBLE MEETING ROOM

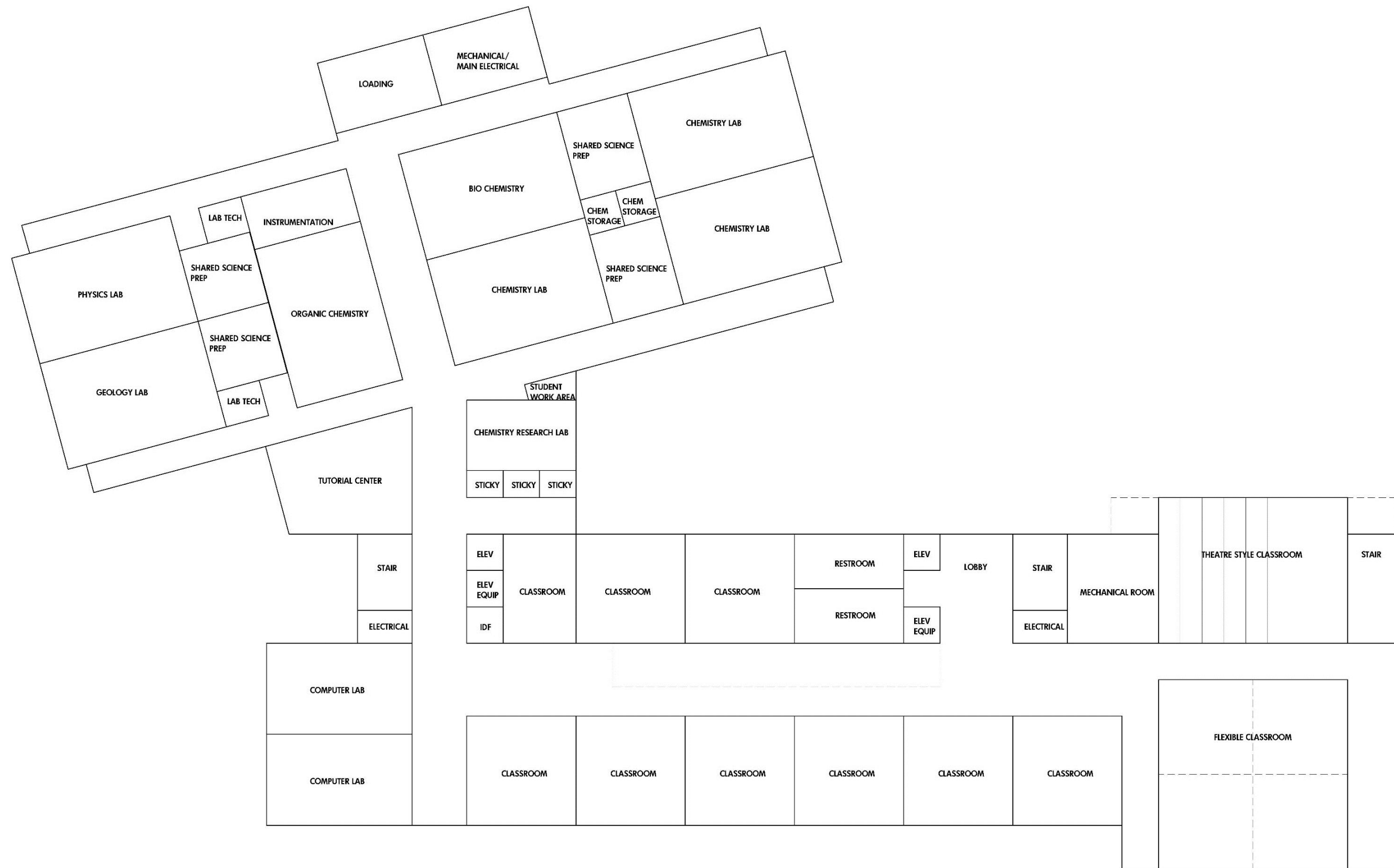
PROGRAMMED FLOOR PLANS



STEM EDUCATION BUILDING

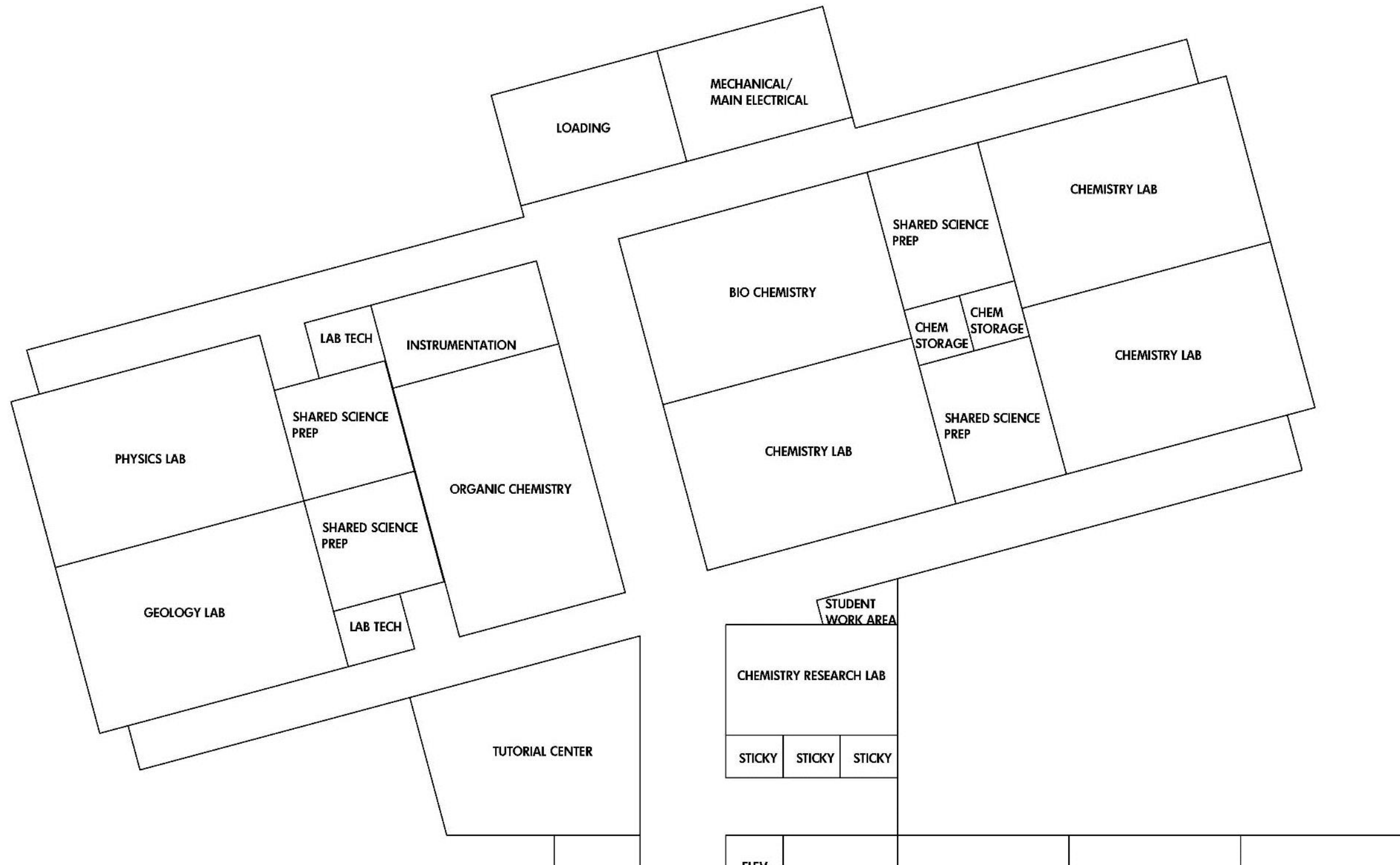
NORTHEAST LAKEVIEW COLLEGE

JUNE 13, 2018



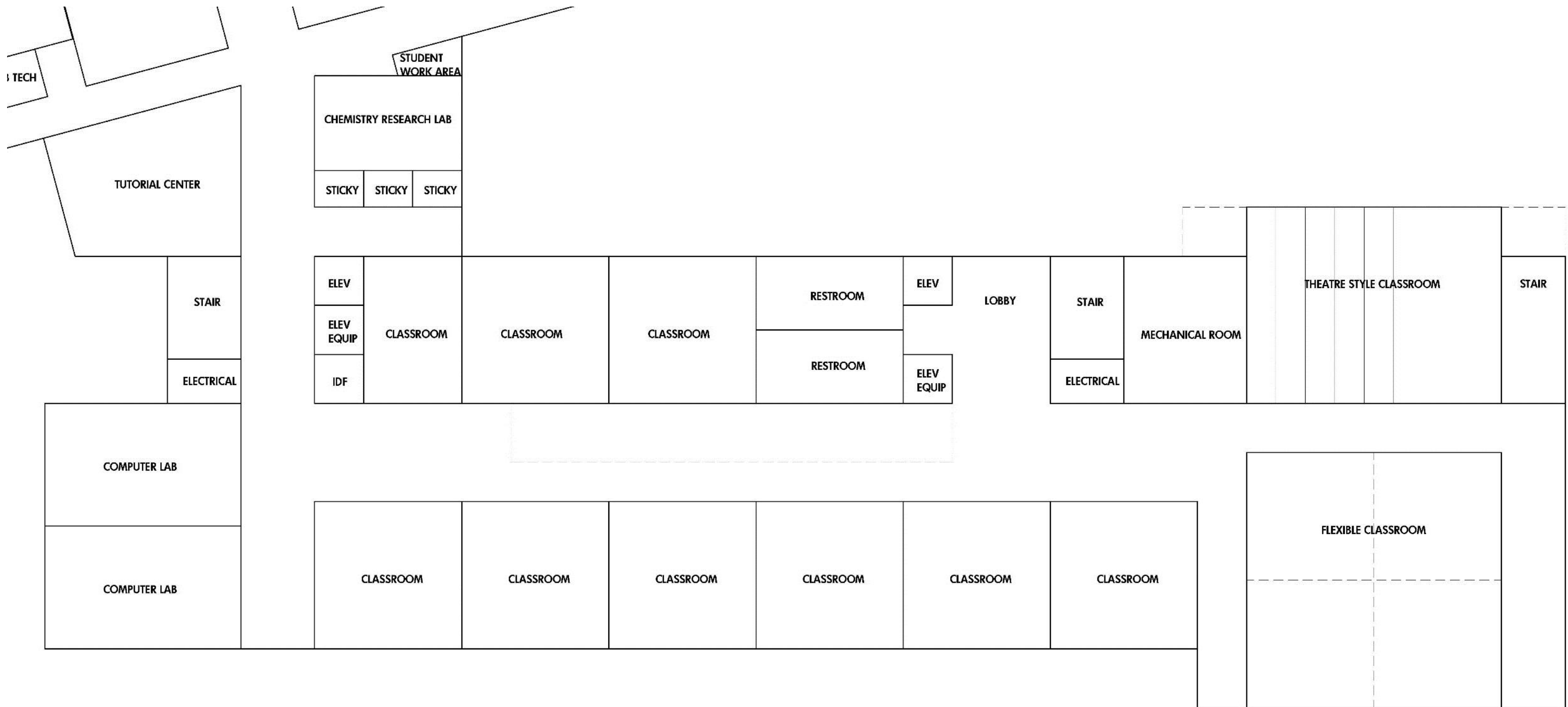
1ST FLOOR BLACK & WHITE FLOOR PLAN





1ST FLOOR (ENLARGED) BLACK & WHITE FLOOR PLAN





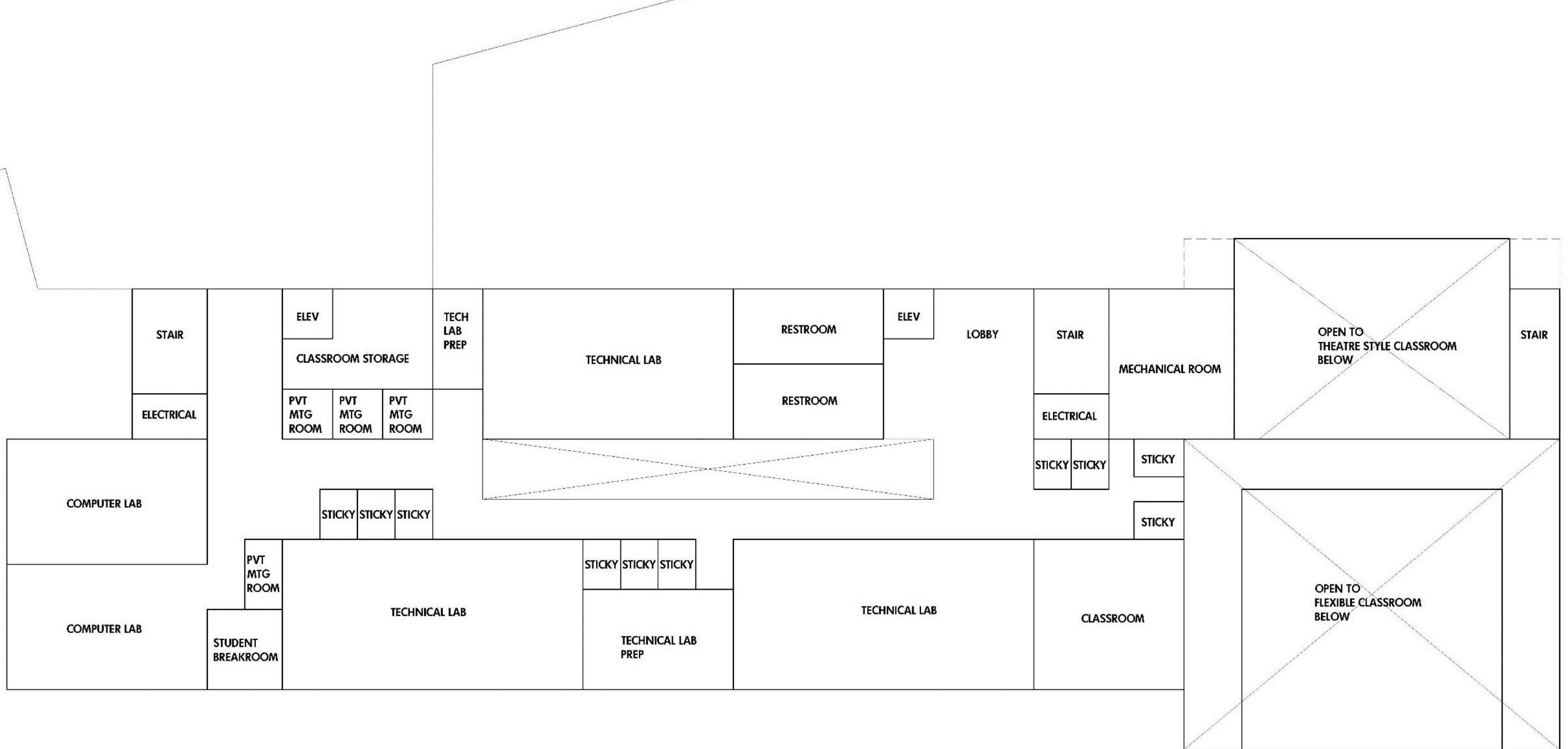
1ST FLOOR (ENLARGED) BLACK & WHITE FLOOR PLAN



STEM EDUCATION BUILDING

NORTHEAST LAKEVIEW COLLEGE

JUNE 13, 2018



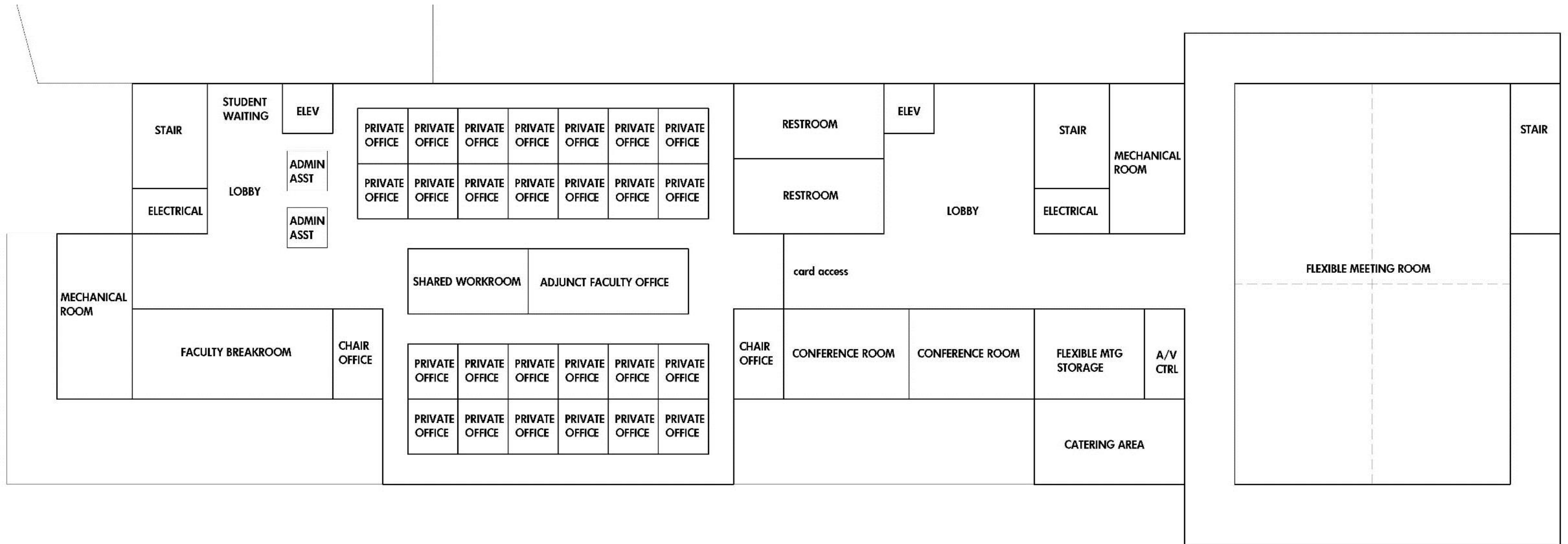
2ND FLOOR BLACK & WHITE FLOOR PLAN



STEM EDUCATION BUILDING

NORTHEAST LAKEVIEW COLLEGE

JUNE 13, 2018



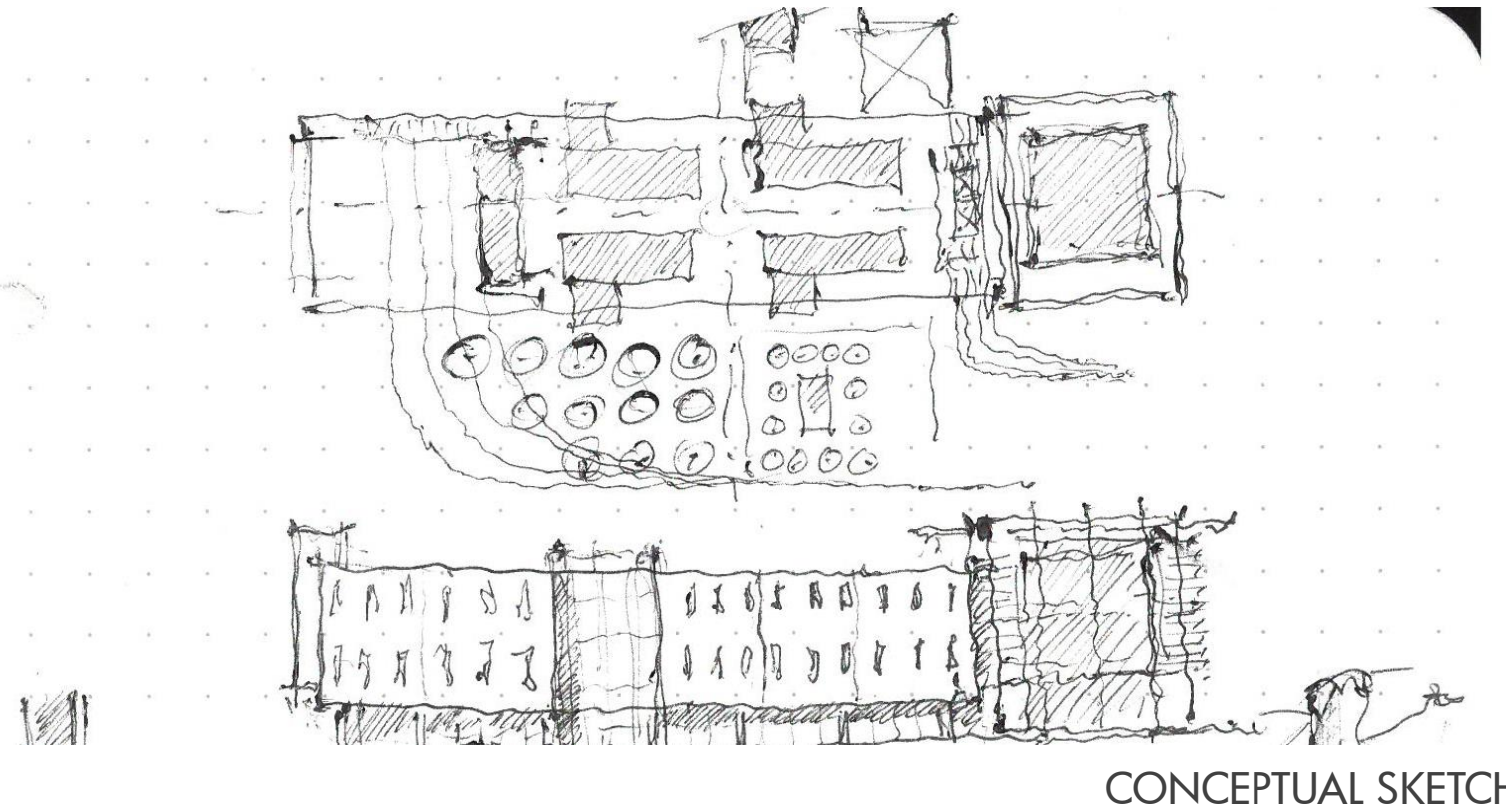
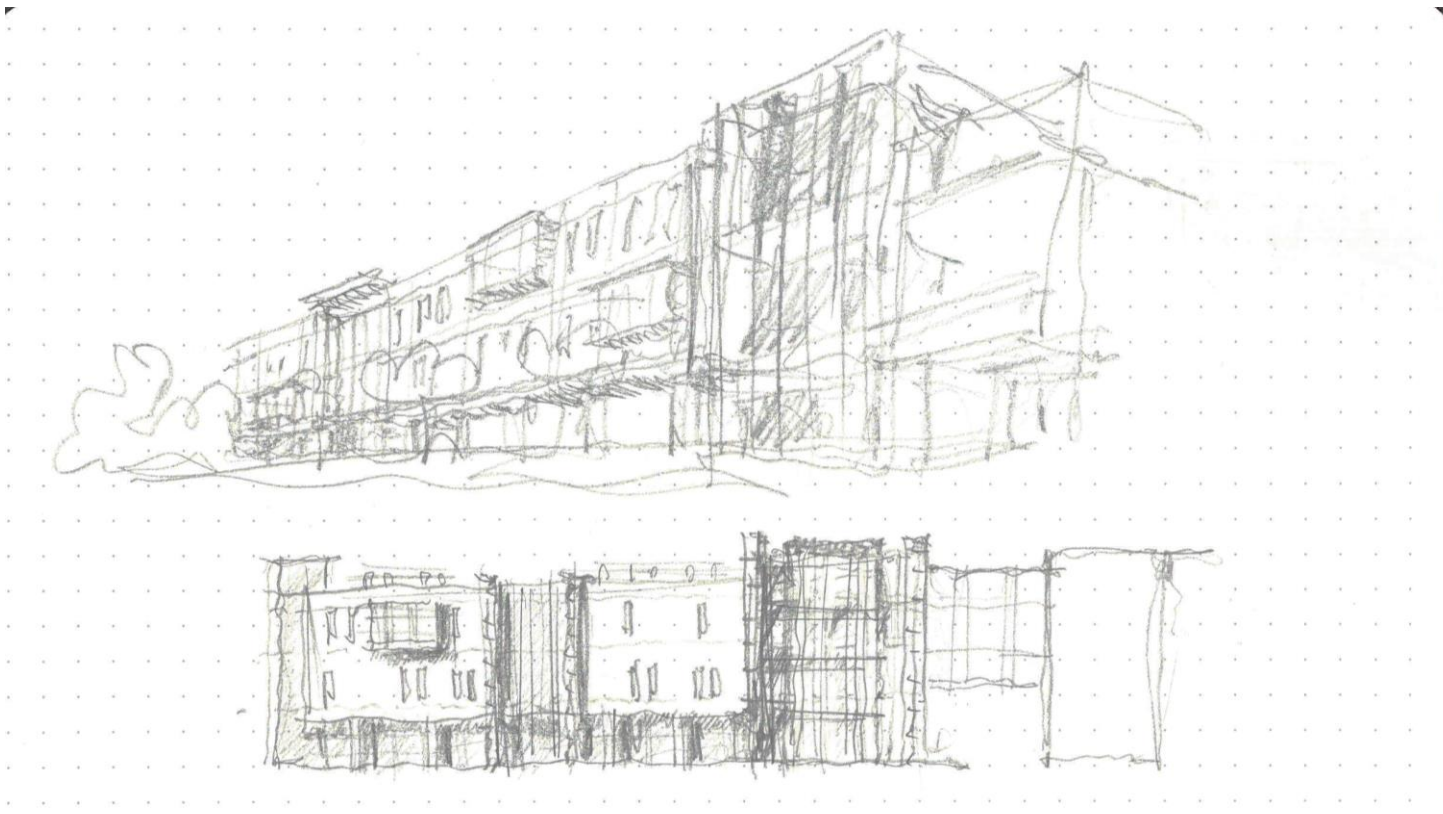
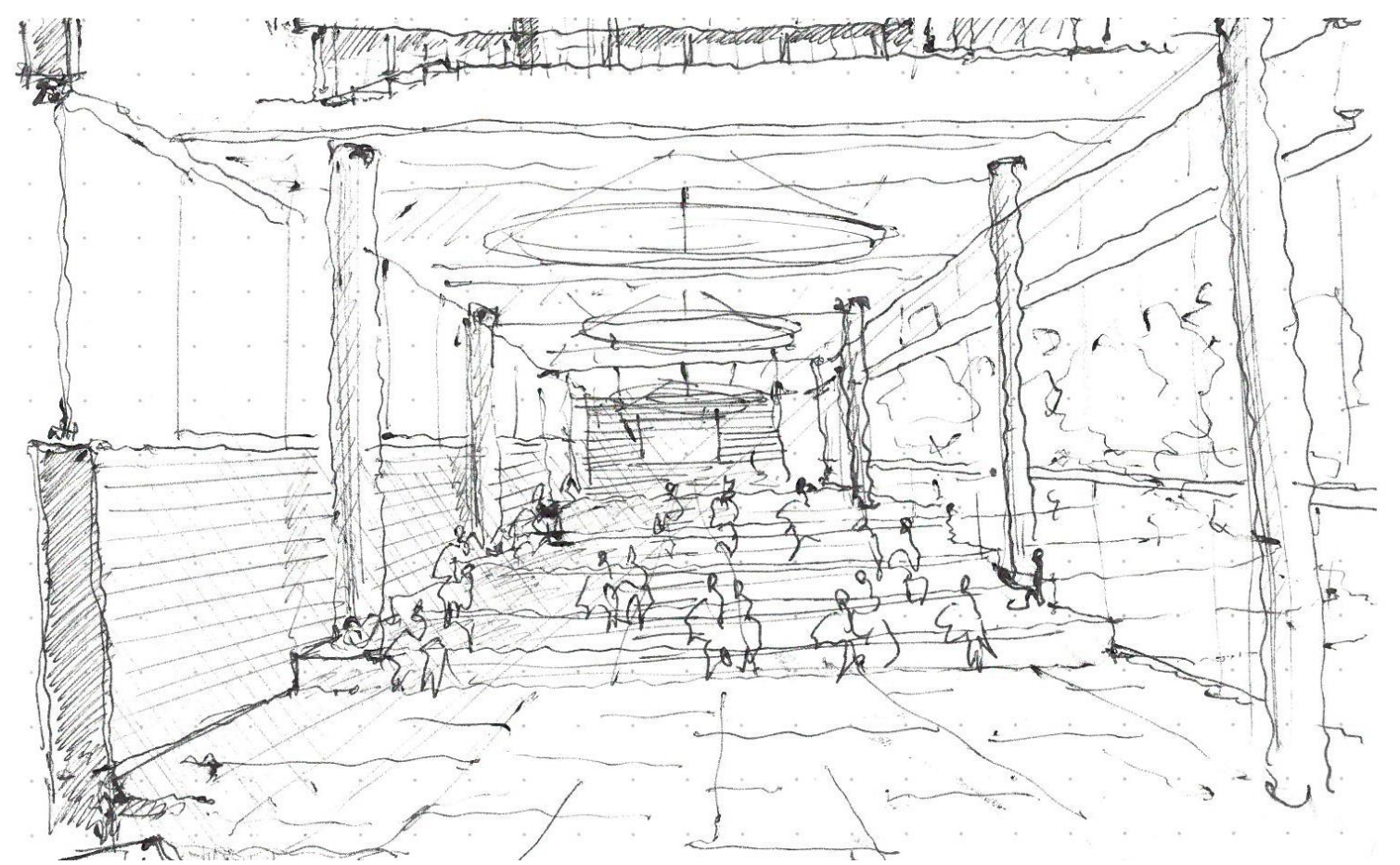
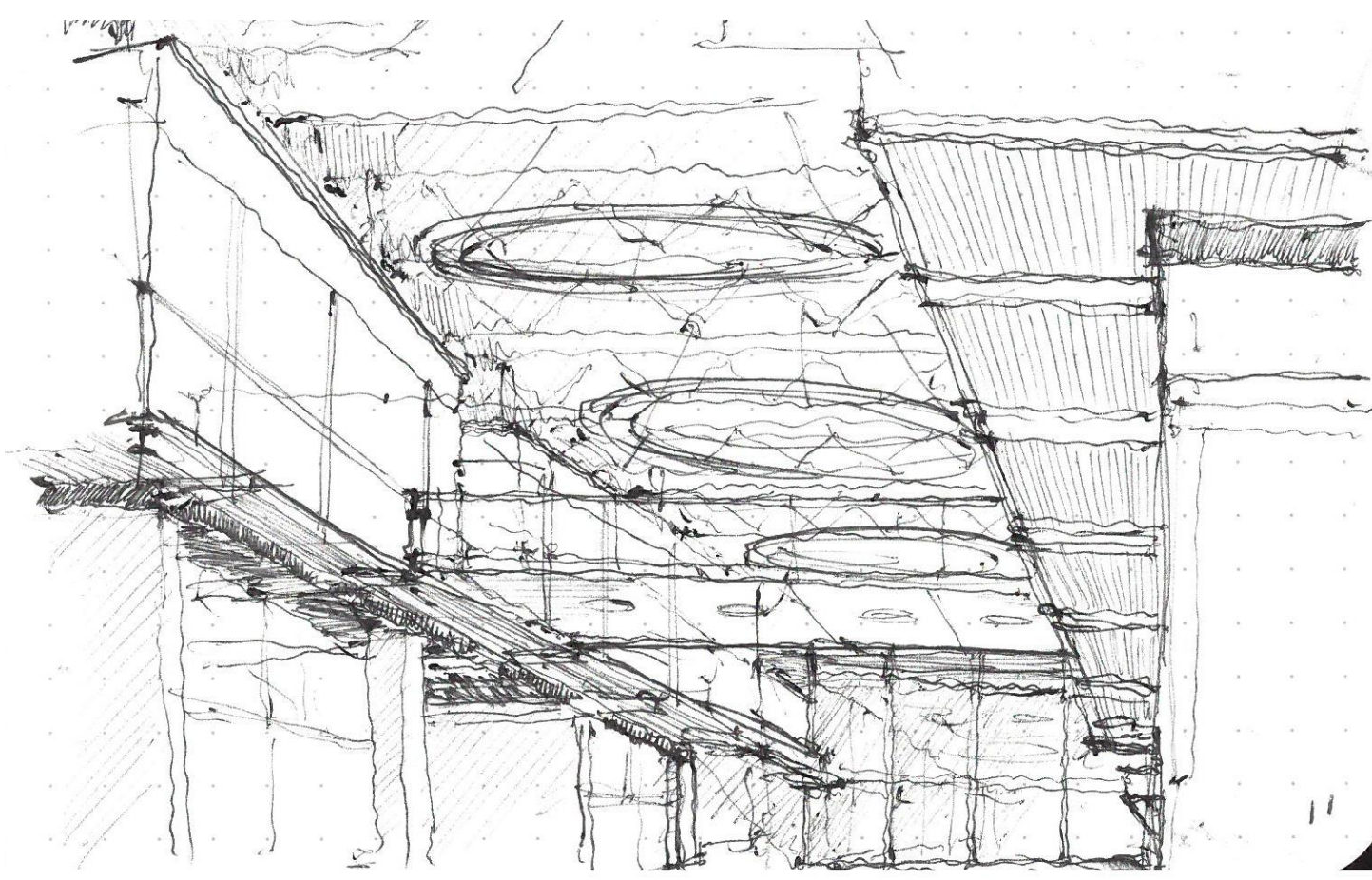
3RD FLOOR BLACK & WHITE FLOOR PLAN



STEM EDUCATION BUILDING

NORTHEAST LAKEVIEW COLLEGE

JUNE 13, 2018

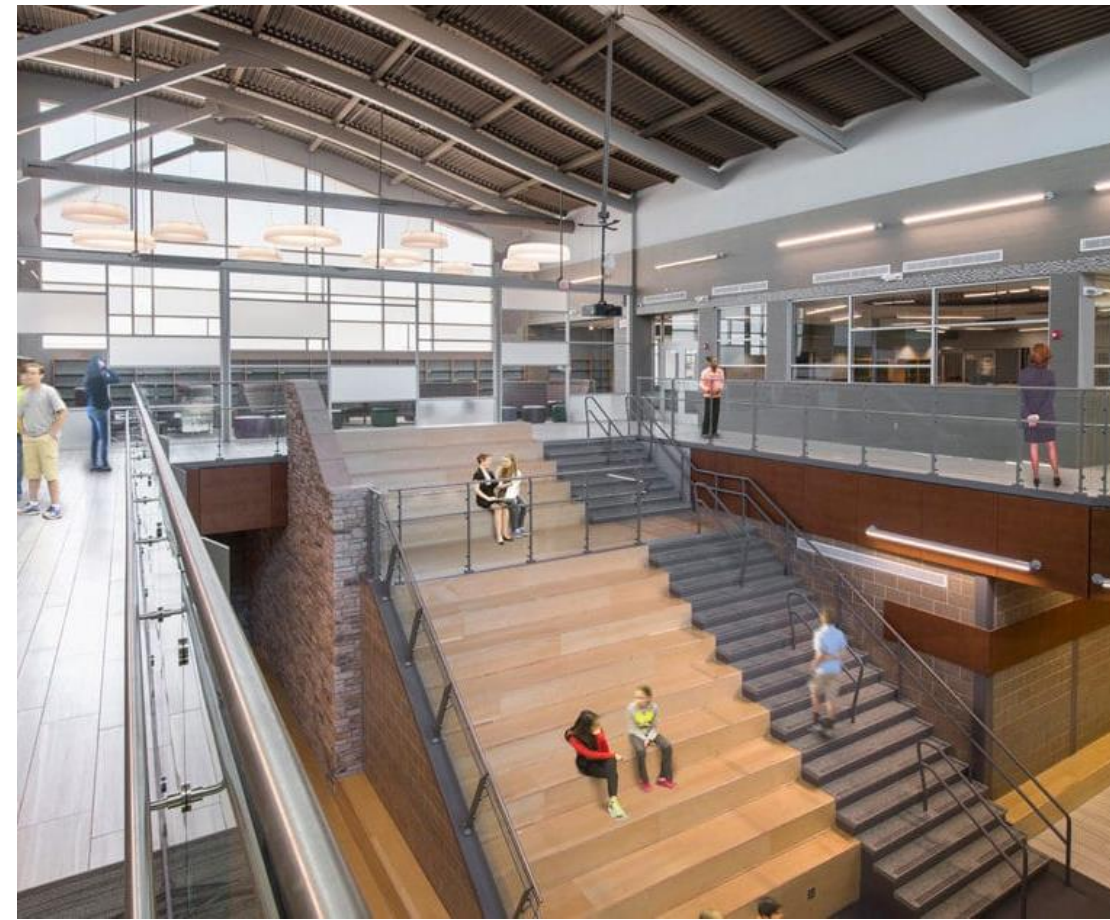


CONCEPTUAL SKETCHES

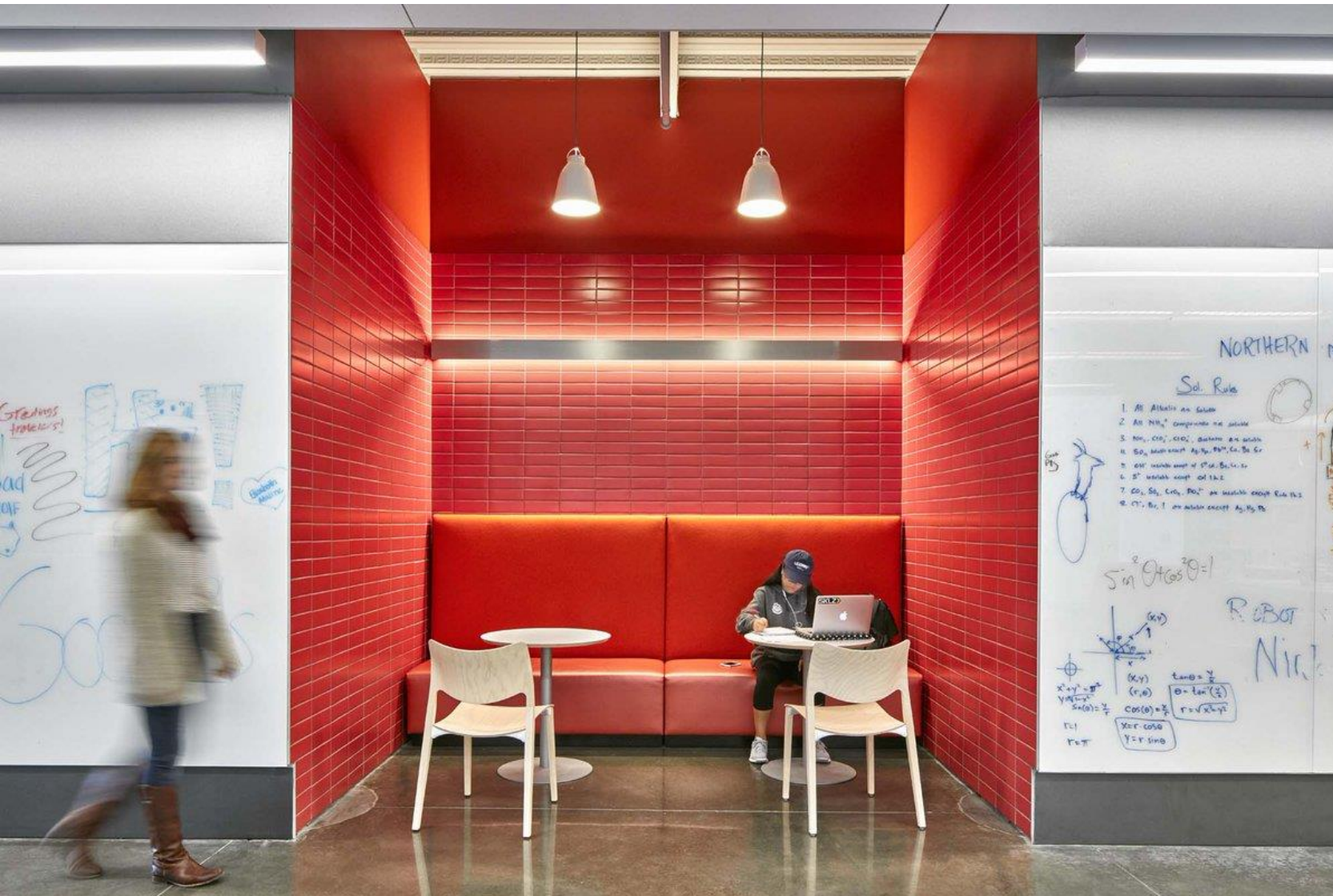




DESIGN PRECEDENTS



DESIGN PRECEDENTS



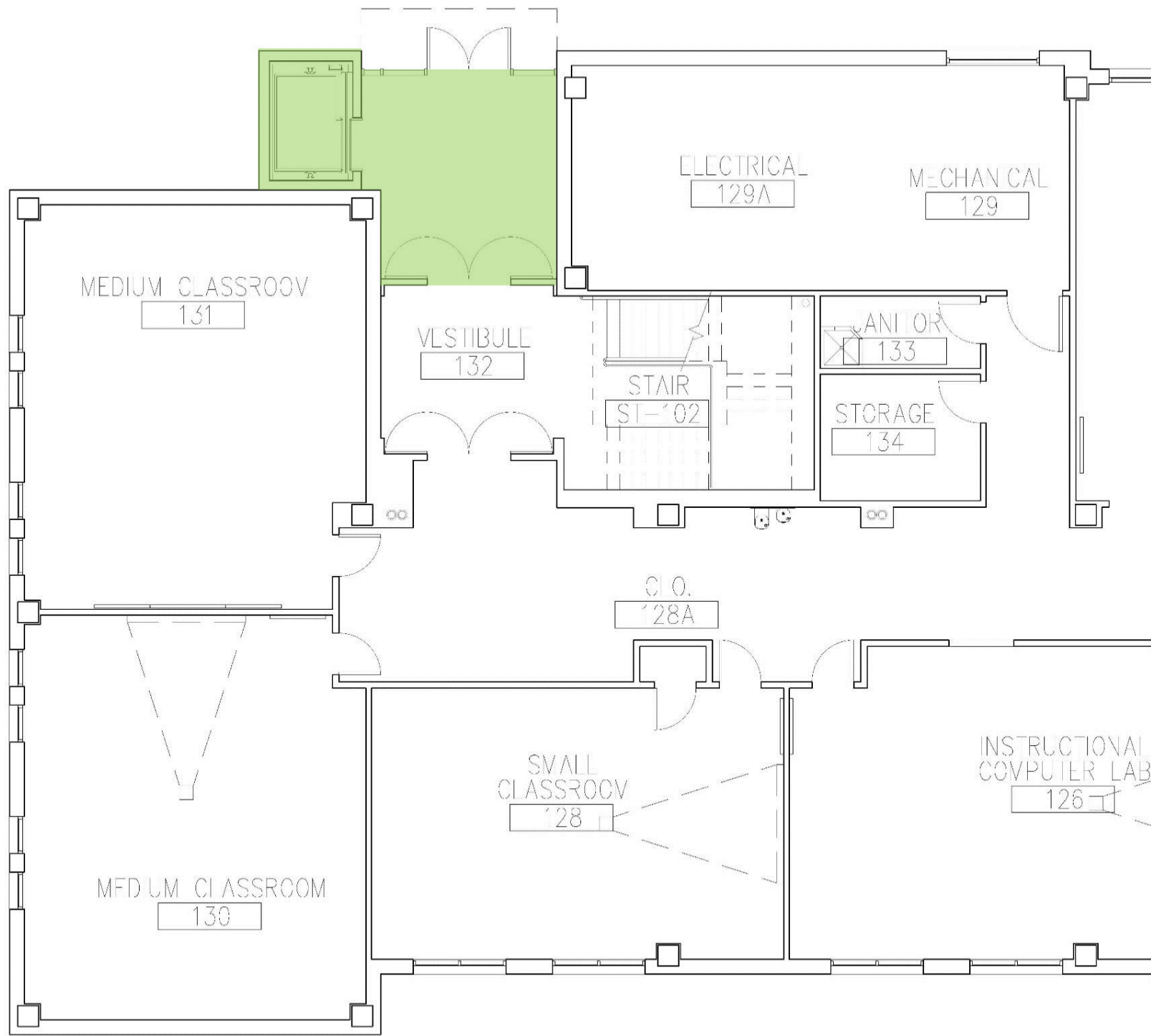
ACADEMIC 1 NEW ELEVATOR

STEM EDUCATION BUILDING

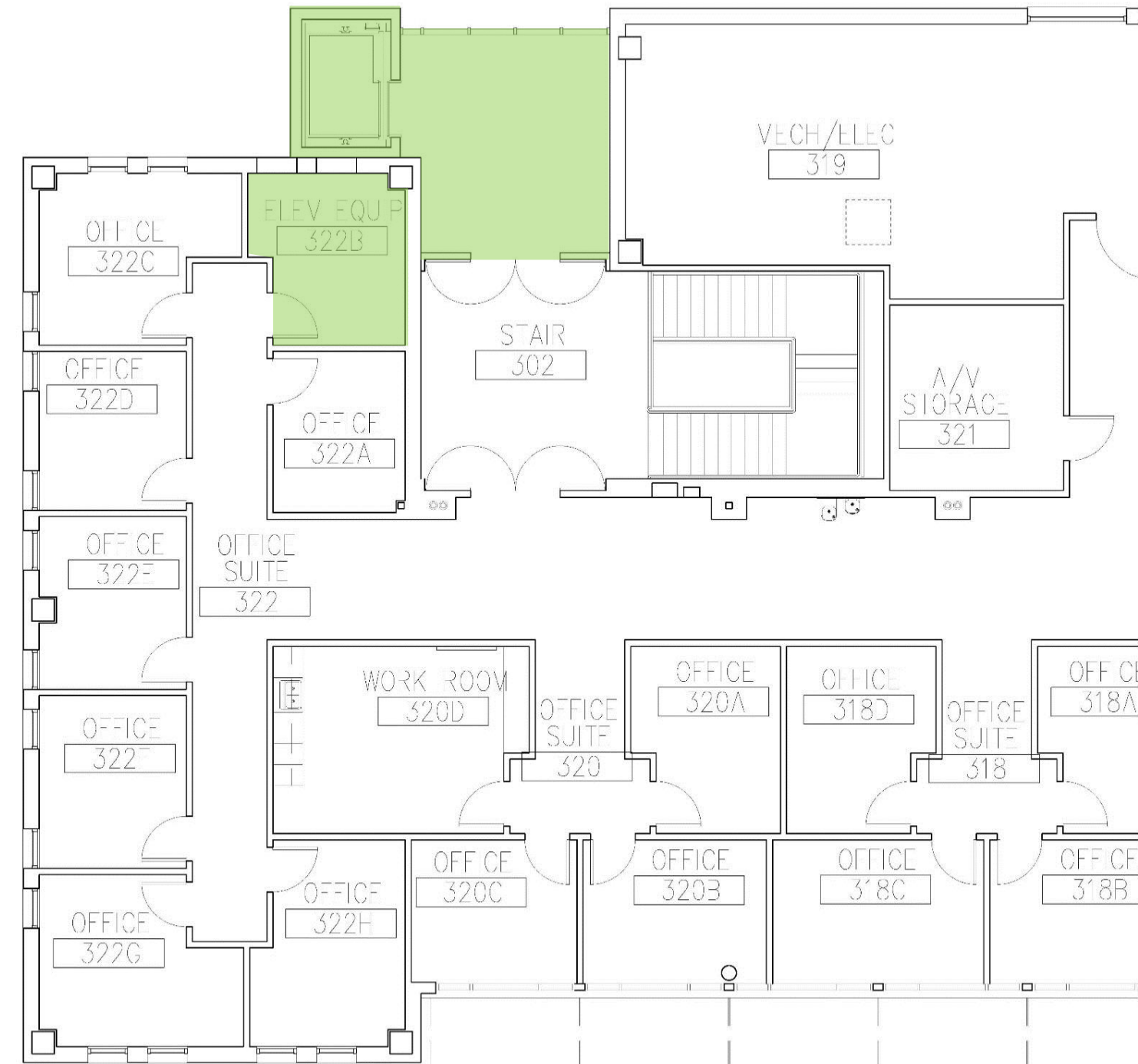
NORTHEAST LAKEVIEW COLLEGE

JUNE 13, 2018





LEVEL 1 ENLARGED PLAN



TYPICAL UPPER LEVEL ENLARGED PLAN

ACADEMIC I (NORTHWEST CORNER)

