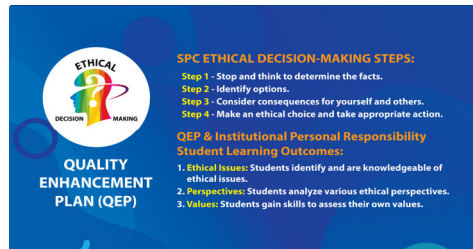




**Quality Enhancement Plan (QEP)**  
Ethical Decision-Making (EDM)  
Tues 20 April 2021 Weekly Progress Report



1/18 slide above reads: "Our SPC Ethical Decision-making steps 1) Stop and think to determine the facts; 2) Identify options; 3) Consider consequences for yourself and others; 4) Make an ethical choice and take appropriate action." and the "QEP & Institutional Personal Responsibility Student Learning outcomes: 1) Ethical Issues: Students identify and are knowledgeable of ethical issues. 2. Perspectives: Students analyze various ethical perspectives. 3. Values: Students gain skills to assess their own values." Created by Johnny Rodriguez. (The statement above was added for Quality Matters (QM) and for Universal Design compliance.)

4/19: A leadership strategy without ethical clarity produces moral and economic bankruptcy. - Bill Donahue. Students – Jarrett Lubianski and Zoey White



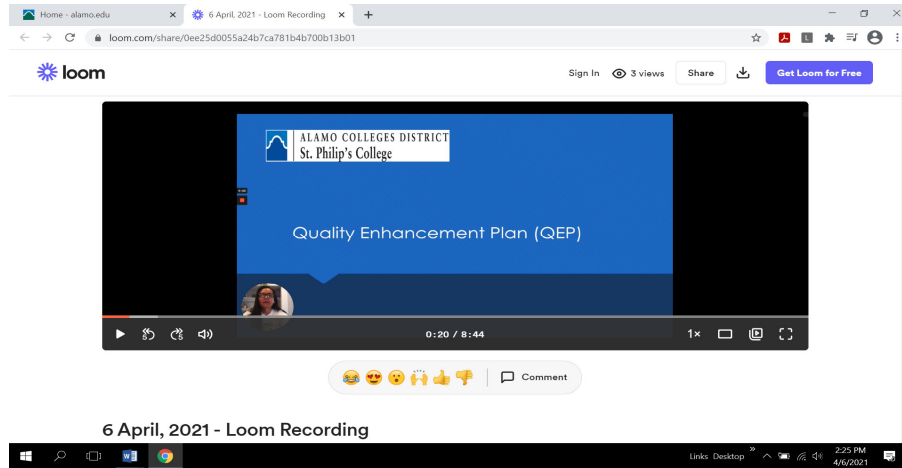
### Student Engagement

**What Would You Do** scenarios: Dr. Angela McPherson Williams (Dr. Mac), Director of Student Success; Department of Student Life staff.

**Student Engagement Grants: Planning for Fall has begun.** To continue our partnership with Bowden Academy, contingency planning includes possible visits to Bowden Academy, and/or for SPC students to write a children's book using the [SPC QEP 4 step ethical decision-making process](#) and identify an ethical issue, values, and perspectives of characters involved in the story. Kelli Rolland-Adkins, Irene Young. <https://www.alamo.edu/spc/admissions/pay-for-college/scholarships/seg/>

**Community outreach: Early College and Dual Credit High school presentations**

**Online presentation:** <https://www.loom.com/share/0ee25d0055a24b7ca781b4b700b13b01> (8:44). Liz Castillo.



**Alamo Heights High school, Alamo Heights ISD**  
**hosted by Mr. David Foss**  
**English instructor**

**Tuesday 4/13, 9 am, Ms. Denise Villasana, Dual credit coordinator, 20 students. Dr. Manzo.**

**Wednesday 4/14, 8:40 am, 14 students. David Kisel.**

**Wednesday 4/14, 1:25 pm, 10 students. Dr. Manzo.**

**Thursday 4/22, 1 pm, 15 students. Dr. Manzo**

**Thursday 4/22, 1:35 pm, 16 students. Dr. Manzo.**

**Karen Wagner High school, Judson ISD**  
**hosted by Connie Martinez**  
**Early Childhood Development Education instructor**

**Thursday 4/22, 1:35 pm, 16 students. Michael Gershman.**

**Upcoming Tasks, Events, and Initiatives**

**Community Awareness: Advisory Boards**

**Histology Advisory: Wednesday 21 April, 3 pm. Lucila Escobedo, Histology Technician, Program Director. Dr. Manzo.**

**Occupational Therapy Assistant Advisory: Wednesday 21 April, 5:30 pm. Kathryn Freeman, Master of Occupational Therapy, Program Director. Dr. Manzo.**

**Respiratory Therapy Advisory: Friday 30 April, 12 pm. Christa Mitchell.**

**Diesel Tech Advisory: Friday 7 May, 11:30 pm. Ian Culbertson.**

**Faculty and Staff Professional Development: Best Practices**

**College Services Division: TBA.**

**2019 Assessment overview: Personal & Social Responsibility Inventory II**

PSRI II, post-Test: M 11/9-F 12/11. M 11/17: 339 surveys completed.  
 Due to fully Remote semester, 2020 PSRI-II began 7 days earlier than in 2019,  
 so this year's PSRI-II will be open 7 days longer than in 2019.

#### Overview of PSRI-I Assessments: 2019 and 2020

2020: F 8/21-F 10/2: M 8/31: 460; F 9/11: 642; R 9/17: 705; R 9/24: 798; M 9/28: 857; F 10/2: 928 surveys completed; due to fully remote semester extended to Fri 10/2 (14 days).

2019: F 8/23-F 9/20; 1157 surveys completed.

Note: 2019 had 229 more surveys completed than in 2020; 2020 was our first fully remote semester.

Publicity: Emails sent directly to students regarding PSRI-I and -II surveys;

TigerPRESS also announces PSRI-I and -II; PSRI-I poster. Liz Castillo, Johnny Rodriguez, Alexa Saavedra, Larry Lopez.

#### Archives for Weekly Progress; Mid-Year; and Annual Reports, 2016 January to Present

<https://www.alamo.edu/spc/about-spc/strategic-plan/quality-enhancement-plan-qep/about-qep/>

SPC updates: <https://www.alamo.edu/spc/> | SPC Mission, vision, and values <https://www.alamo.edu/spc/about-spc/strategic-plan/mission-vision-and-valuesstrategic-plan/>

QEP homepage: <https://www.alamo.edu/spc/qep> | All sessions conducted via Zoom

Upcoming quotes:

4/26: "The day the world learns to measure the net worth of an entrepreneur based on their direct involvement in social welfare and not with money, is the day we'll begin to make substantial strides in eradicating poverty and hunger." - Abhijit Naskar, Ain't Enough to Look Human. Student – Amanda Caudillo

END