

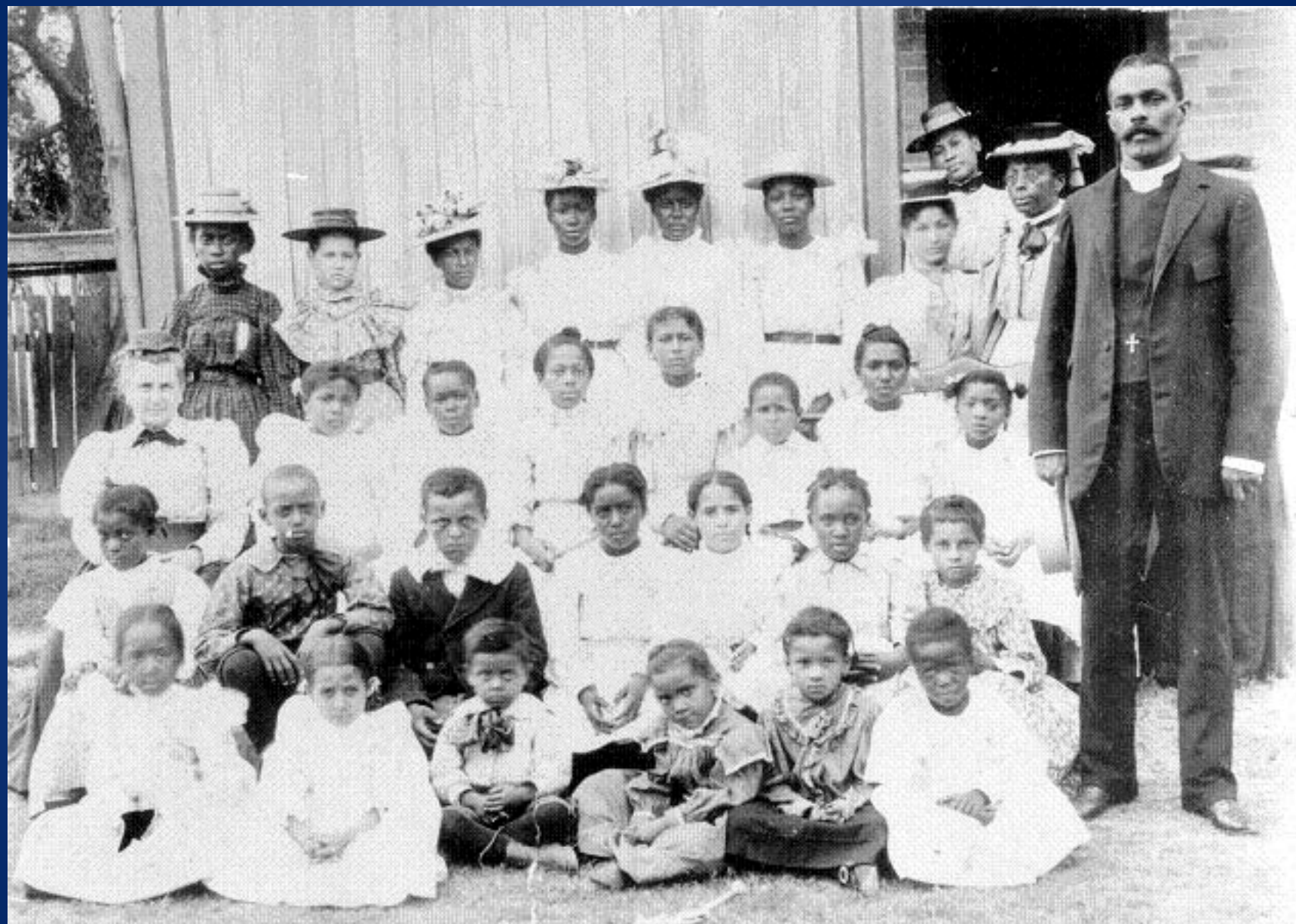


ALAMO
COLLEGES
DISTRICT

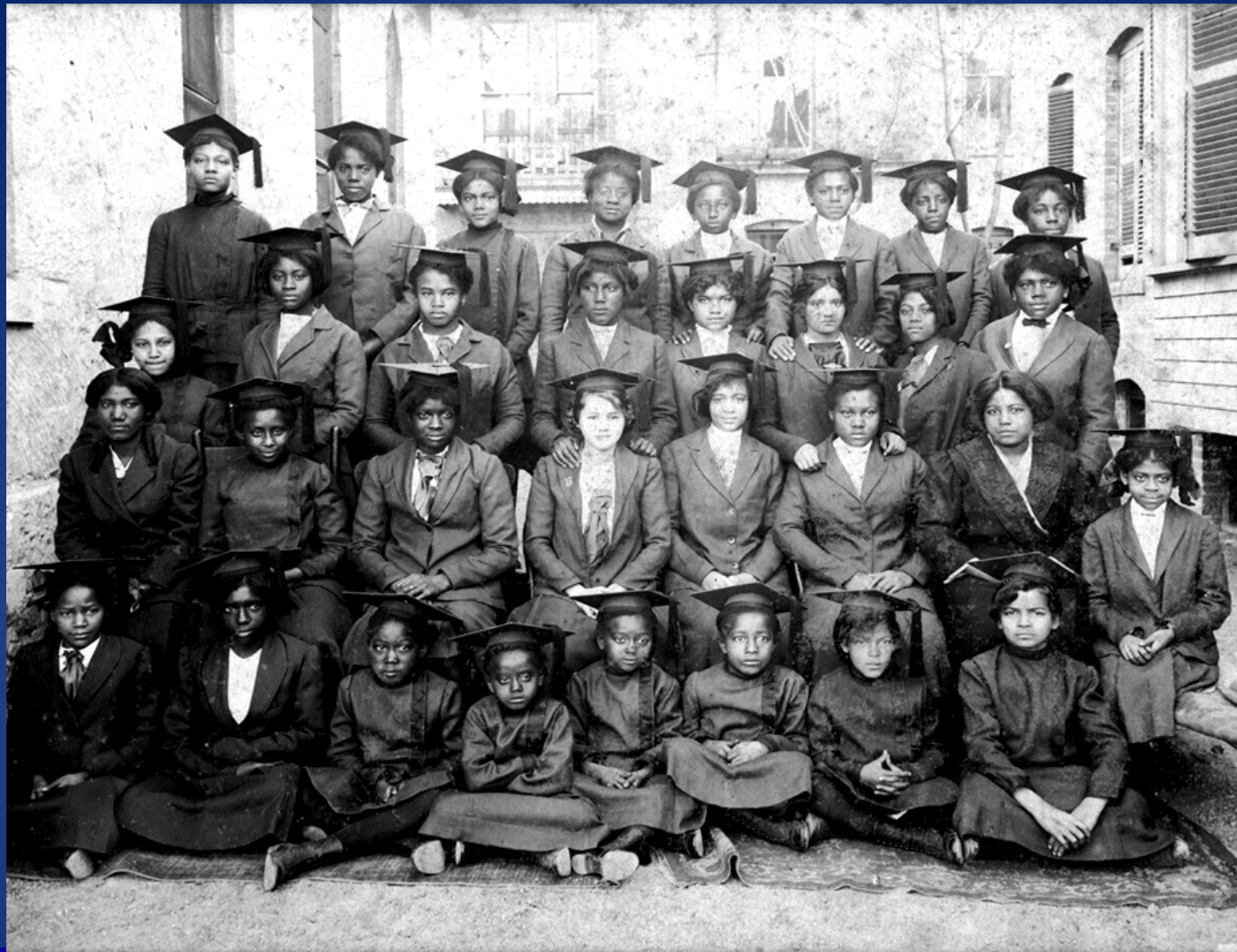
St. Philip's College

ST. PHILIP'S COLLEGE WELCOMES QUALITY TEXAS EXAMINERS



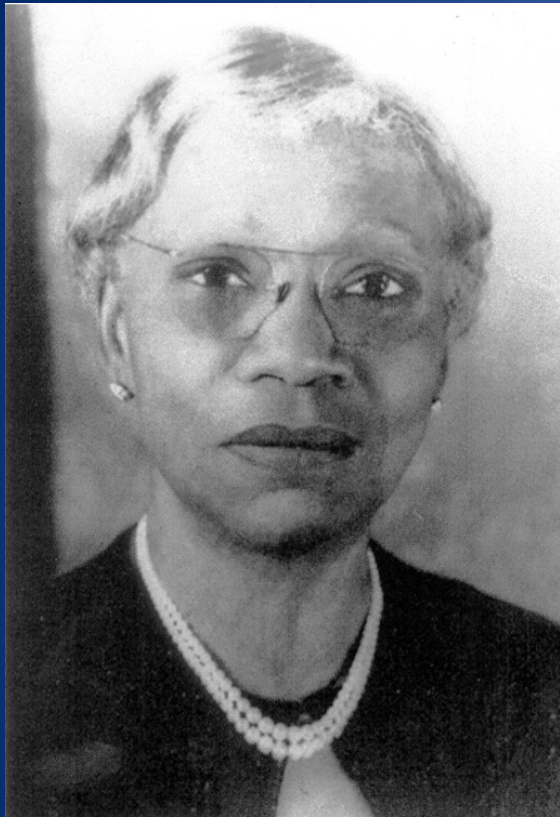


Saturday Evening Sewing Class for Black Girls



- Founded in 1898 -

The only Historically Black and Hispanic Serving Institution
in the United States



In her 52 years of leadership,
Ms. Bowden developed
St. Philip's into a fully
accredited, integrated and
comprehensive community
college serving the intellectual
and workforce needs of
San Antonio

Artemisia Bowden
Principal ◦ President ◦ Dean
◦ President Emeritus
1902 - 1954
“Savior of St. Philip’s”

Why Baldrige Framework?

- Desire by senior management to obtain external feedback given recent progress in process management
- Cost effectiveness of process: extensive hours with numerous experts with “eyes on our organization”
- Desire to continue on path of Continuous Quality Improvement of processes and systems
 - Encourage a purposeful, relevant, engaging and process-thinking experience for all involved

Embedded Approach

Baldrige principles into practice

Integrate Baldrige broad principles into organizational practices

- Leadership support accountability to framework, continuous improvement and responding to rigorous application criteria

Designate personnel to manage and Champion TAPE related activities

- Allow campus community to become beneficiaries of the Baldrige Core Values

Incorporate best practices from research and other leading organizations

- Integrate the TAPE assessment in the performance improvement system

Systematic Continuous improvement focused on our mission and core competencies

Our Performance Excellence Journey

- TAPE Recognition

- 2010 Engagement Level

- 2011 Achievement Level

- OFI focus: Develop scorecard, refine annual planning cycle and process mapping

- 2013 Achievement Level

- OFI focus: Number of KPIs, adjunct faculty inclusion, and best practice sharing

- 2014 Achievement Level

- OFI focus: Align strategic plan and OUAP, implement complaint management and feedback system; leverage 4DX cycles and project management for performance improvement

- 2017 Achievement Level

- OFI focus: Leverage FOCUS PDCA activities for improvement, identify more comparative and competitive data

SPC Challenges

- Quality and effectiveness with decreased funding
- College readiness of incoming students
- Online competition
- Public expectation of high performance

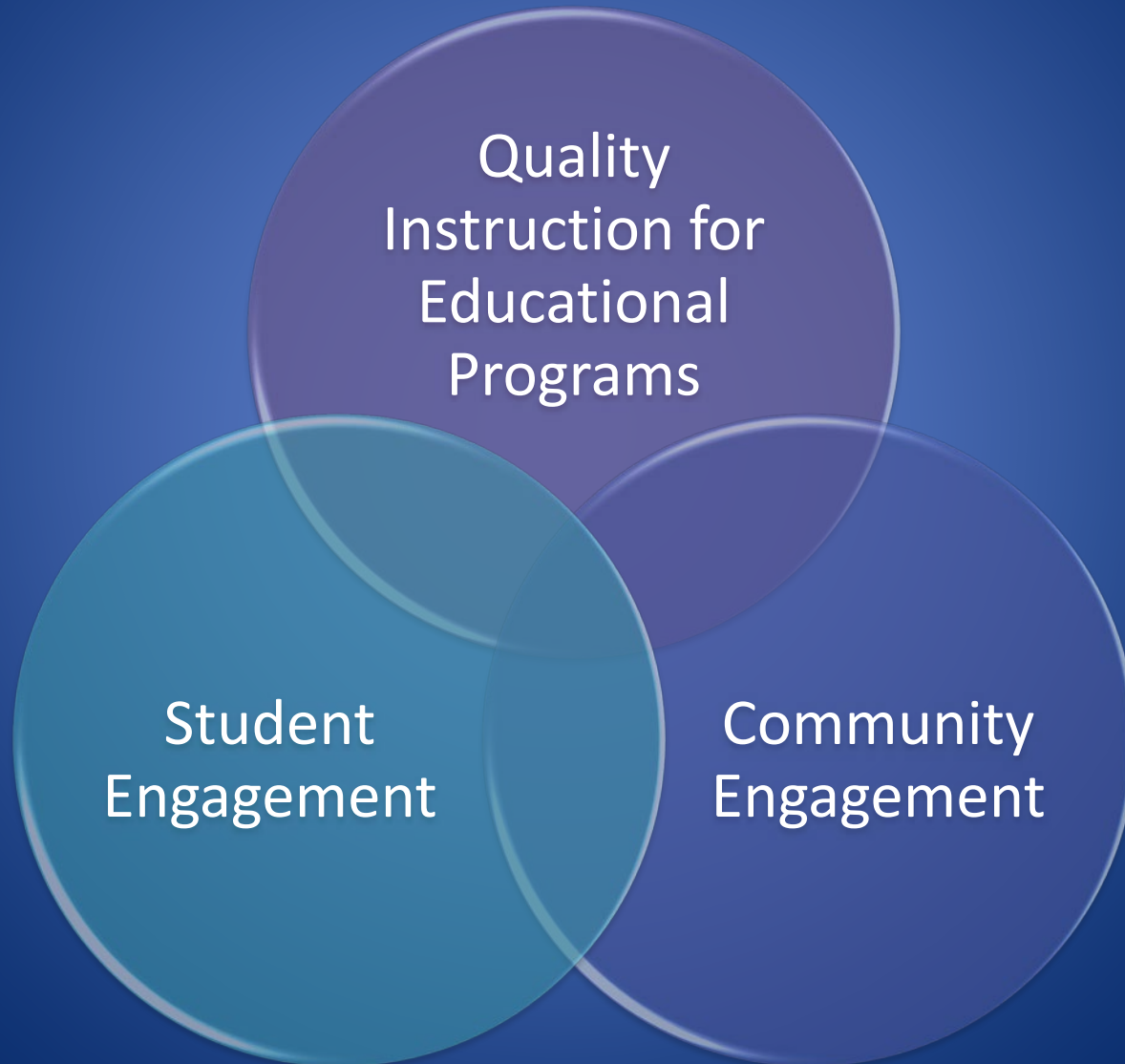
Fall 2017 – 12,039 Students

Student Profile

43% Male	11% Black	77% Financial Aid
57% Female	26% White	24 Average Age
	56% Hispanic	(13% 40+)



Core Competencies





*Quality Instruction
for Educational
Programs*

Student Learning



- **Best in the District – 3 years consecutively**

- Course Completion Rates (93.7%)
- Productive Grade Rates (85%)
- Number of High Risk Courses (5)

BEST Community College



Tourism and Culinary Arts

– *Exemplary Status* –

The American Culinary Federation

BEST Community College

- **Volunteer Income Tax Assistance Program**
 - Second highest producer in the country
 - Received recognition from the IRS
- **National Center of Academic Excellence in Information Assurance**
 - Designated by: National Security Agency and Dept. of Homeland Security



Dr. Frank Bryant, Jr. Patient Simulation Center

Lifelike patients



The center exposes students to advanced healthcare scenarios that expand basic training.

Academic Achievement



Cyber Tigers

One of the 1st Cyber First Responder's Clubs in the nation

2016 Licensure Pass Rates

**Physical
Therapy
Assistant
(96%)**

**Diagnostic
Medical
Sonography
(100%)**

**Licensed
Vocational
Nursing
(82%)**

**Radiologic
Technology
(88%)**

**Airframe
Mechanics/
Aircraft
Maintenance
(100%)**

**Surgical
Technology
(82%)**

**Aircraft Power
Plant Tech
(92%)**

**Occupational
Therapy
Assistant
(95%)**

**Respiratory
Care Therapy
(88%)**



Student

Engagement

Student Intake



- NSO aligned with priorities, Alamo INSTITUTES and Alamo ADVISE

- Enrollment increased 17.7% from Fall 2013 (10,238) –Fall 2017 (12,050)
 - Dual credit enrollment increased 48.79% from Fall 2013 (1,740) to Fall 2017 (3,566)
- Financial aid direct loan (DL) processing time decreased 78.34% - FY13 (84) to FY17 (18.2)
- New Student Orientation attendance increased Fall 2015 (646) to Fall 2017 (890)

Psi Kappa Chapter of Phi Theta Kappa Honor Society at St. Philip's College



Recognitions

From 84 members (2010) to current membership of **2,503** (*includes alumni*)

Shirley B. Gordon International
Presidential Award of Distinction, 2011

Received Pinnacle Award 4 years
consecutively

Maintained 5 Star Status 7 years
consecutively

Icarus Award for the Chapter's Honors
In Action project – 2013, 2016, 2017

Hallmark Awards program – 2016, 2017

Five members inducted into the District
V Hall of Honor – 2013, 2016, 2017

Tejas Award for Outstanding Friend of
Texas - 2013

Average Community Service hours -
1467

Student Engagement

Financial Literacy Engagement

- Began as a partnership with USA Funds in 2013 to ensure students made wise financial choices
 - Student default rates decreased from 23.4% (FY 10) to 12.3% (FY14)
- Received an Excellence in Financial Literacy Education Award for 2014 (1,585 students completed modules)

Orientation to Online Learning

- First-time online students are required to complete the course that reviews navigation of the online system for a successful start
 - 2,133 students completed Fall 2017 course
- Recognized a Best Online School in Texas, 2017 (Accredited Schools Online)

Innovation: Jessica's Project

- Service Learning /civic engagement program providing opportunities for SPC students, faculty and staff the opportunity to work community stakeholders to implement initiatives that address various health, wellness, and educational issues in San Antonio's Eastside Promise Zone (EPZ)
- **Jessica's Project** is comprised of four unique program components:
 - Nutritionally Related Diseases Symposium
 - Celiac Disease & Gastroparesis, 2012
 - Spina Bifida & Cystic Fibrosis, 2013
 - Cystic Fibrosis & Ulcerative Colitis, 2014
 - Type II Diabetes & Autism and Food Allergies, 2015
 - HIV/AIDS & Stroke, 2016
 - Parkinson's Disease, 2017

ALAMO COLLEGES
ST. PHILIP'S COLLEGE

**JESSICA'S PROJECT PRESENTS:
WALKER NIGHBERT**

JOIN US!
Join us for this informative event on Cystic Fibrosis. A genetic condition that causes internal organs, especially the lungs and digestive system to become clogged with thick, sticky mucus, resulting in chronic infections and inflammation of the lungs.
All should come prepared with questions for our guest speakers **Dr. Donna Beth Wiley-Courand**, pediatric pulmonologist, UT Medicine San Antonio.
The event is free and open to all our ALAMO COLLEGES students and the general public.
Light refreshments provided.

EVENT:
• **Date:** November 6, 2014
• **Time:** 9 a.m. - 2 p.m.
• **Location:** Sutton Learning Center (SLC), 3rd Floor
• **Sponsors:** Eureka Science Club, Cystic Fibrosis Foundation
For more info, contact Solomon Nfor, snfor@alamo.edu (210) 486-2754 or Kevin Schantz, kschantz@alamo.edu (210) 486-2246.

Jessica's Project
This is a collaborative project geared at educating the public on current disease and how they affect families in our local vicinity.

CYSTIC FIBROSIS FOUNDATION
ADDING TOMORROWS

Innovation: Jessica's Project

- **Jessica's Project** components:
 - SPC-Eastside Community Garden
 - Teen and Unplanned Pregnancy Prevention Summit
 - SPC Hunger Banquet and Food Drive



Annual Golf Tournament



Nine-year grand total: **\$1,320,842**

Scholarships/Grants awarded: \$1,163,150



Presidential Scholars



“Give Back” in the community

2017-18 Projects:

Warrior Cry Music Project

Habitat for Humanity

Respite Care of San Antonio

Boy Scouts

Tiger Tech Club

Legend Oaks Healthcare

SA Food Bank



EXTRAMURAL SPORTS

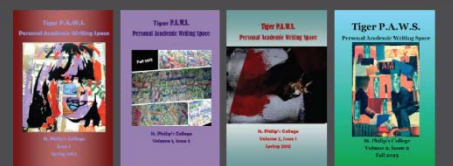
Description: St. Philip's College extramural sports participants represent St. Philip's College within our immediate community and among the Alamo Colleges. Students are active in positively promoting the name and St. Philip's College.

Impact: Student athletes commit significant time to practice, study hall, and games beyond their

Tiger PAWS

Description: Tiger PAWS literary art journal is edited by SPC students and features student writing and artwork.

Impact: Tiger PAWS promotes academic excellence, digital literacy, cultural awareness, and offers a space for experiential and creative voice in a community college setting. The journal provides opportunities for students to participate on the editorial staff, publish their work, plan the Showcase event, and promote participation. This SEG project positively impacts all participating students with a focus on practicing English and writing skills of traditionally under-served students, including those who are racial minorities, economically/educationally disadvantaged, disabled, first time in college, non-traditional students, and veterans. Since its inception in the spring of 2012, four volumes have been published in print and online, serving the entire college community and the community at large.



Showcasing Student Success in the Arts

COMMEMORATIVE AIR FORCE

Description: Students in this program participate in restoration activities on historically significant aircraft, engaging in service learning while applying the skills learned in the college's Aircraft Technology program.

Impact: Students demonstrated proficiency in a service learning environment while gaining valuable work experience and networking with people in the aviation industry. Many of the restored aircraft are exhibited at air shows across the nation. The students' presentation efforts also helped them gain a better understanding of the aviation industry and its potential as a career choice. Additionally, St. Philip's College and the Aircraft Technology program gained some recognition within the aviation industry.



Cyber Tigers Student Engagement / HEB Scholars Scholarship

Description: Students participate in the Cyber Tiger student organization aimed towards Cyber security and offering a first responder program in their community for Cyber threats.

Impact: Cyber Security plays a major role in the local community and society. Spreading awareness of cyber threats and best practices in information technology is a crucial component of this organization. The students involved in this program serve as mentors to high school students in the surrounding community by educating them about cyber security and training them for local and national security competitions. In addition to being mentors, they develop their own critical thinking skills through competing in local and national security competitions and study and prepare for nationally recognized certifications such as the NSA's net+ training standards.



Student Ambassadors

Description: The St. Philip's College Student Ambassadors positively promote the institution, internally and externally, primarily focusing on recruitment and community relations.

Impact: The Student Ambassadors attended 30 different events this year both on and off campus and assisted with Student Recruitment events, such as the 2018 Middle School Program, which hosted about 300 middle school students. The Student Ambassador project enables currently enrolled students to interact with prospective students and to share their own personal St. Philip's College experiences.



SEG "Gives Back" on campus

SGA Student Government Association

Description: Student Government Association officers build an active campus community through campus-wide events and provide representation to the student body.

Impact: The Student Government Association program fosters student involvement and provides a valuable student voice. Student Government Association members represent the student body at various meetings both on and off campus, during events with the Alamo Colleges, and among the larger St. Philip's College community.



CENTERS OF EXCELLENCE FOR MATH AND SCIENCE

Description: The COE SEG program is designed for enthusiastic students eager to promote the college's STEM degrees, scholarships and community programs to the San Antonio area.

Impact: The SEG program for the Centers of Excellence for Math and Science supports the mission of being a response to workforce needs for trained workers for high paying careers in science, technology, engineering and mathematics (STEM).



SAYWE

Description: The SAYWE SEG awardees will engage in:
 • Recruiting of new students to the program
 • Demonstrate leadership for other students by providing support in classroom preparation and returning of materials to storage after classes meet.

Impact: The impact of the SEG students will increase enrollments in the SAYWE program and provide for new or better contacts in our service area for the continued success of the program.

VITA VOLUNTEER INCOME TAX ASSISTANCE

Description: Students participate as tax preparers in the college's VITA site during the tax season helping prepare tax returns for members of the community.

Impact: Students obtained formal tax training provided by the Catholic Charities and the IRS to get certified to work at the VITA site as tax preparers. They also prepared information for the design of Microloan to promote the VITA program throughout the community and they participated in the Martin Luther King Jr. March by staffing the St. Philip's College booth and distributing information about the VITA program. Through their service in the VITA site, students practice their accounting skills, customer service skills, and experience the personal satisfaction of giving of themselves to the community. In 2017, with the help of the students in this program, the site has served over 1,500 community members in the first 25 days of operation. After almost 20 years of service, the St. Philip's College VITA site served 2,000 community members in 2017 with over \$3.6 million in income tax refunds going back to the community.



MATHEMATICS STUDENT ENGAGEMENT SCHOLARSHIP

Description: Students receive a tuition and non-tuition book scholarship in return for community service as interns in MATHWORLD, a tutoring and computer lab. Through this experience and mentoring from mathematics faculty, they learn how to be a researcher in the fields of mathematics, statistics, and engineering.

Impact: Students were provided many opportunities to engage professionals in their field of study, to interact with faculty members who serve as mentors, and to share their knowledge with the community by doing volunteer tutoring alongside the Instructional Skills Specialist in MATHWORLD. This initiative promotes the mission of the Center of Excellence in Mathematics to "engage and nurture students in the mathematical sciences."





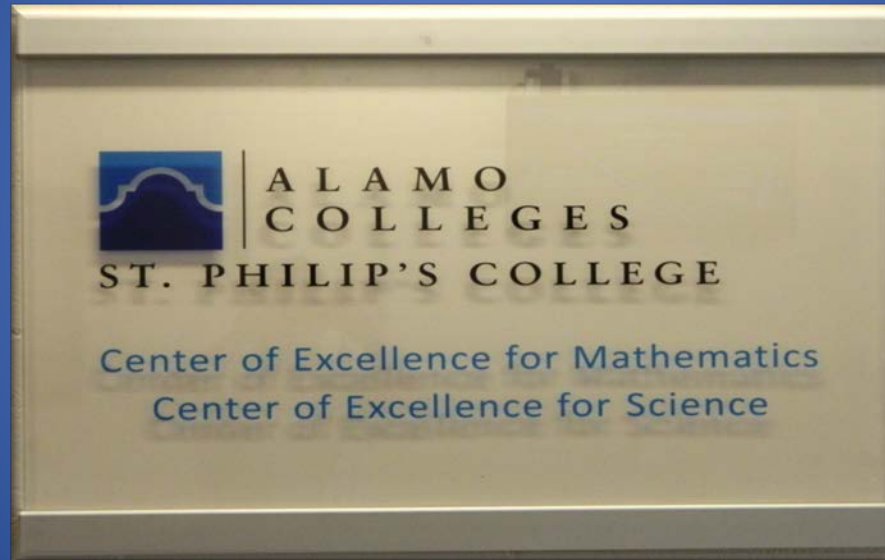
Community Engagement

Community Outreach

- Green Energy and Engineering Day

- Women Breaking Through

- WINTO



- STEM Career Day

- CORE4 Family Day

- STEM Symposium

- Monster Tech

Building a College Going Culture / Summer Youth Programs

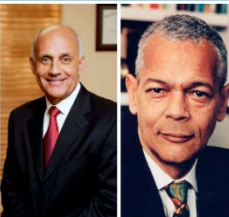
- **K-8 Summer Academy / MicroSociety Program**
- **Science and Math Summer Academy**
- **Camp 98.6**
- **Math Advanced Placement Camp**
- **Robotics Camp**
- **Motivating and Engaging STEM Activities (MESA)**
- **SA Pre-freshman Engineering Program**

President's Lecture Series

- Provides opportunities for campus community to hear speaker's prospective on a range of local, regional, national and international issues.

ALAMO COLLEGES
ST. PHILIP'S COLLEGE

ST. PHILIP'S COLLEGE
PRESIDENT'S LECTURE SERIES



DR. RICHARD CARMONA
17TH SURGEON GENERAL OF THE UNITED STATES


JULIAN BOND
FORMER CHAIRMAN OF THE BOARD, NAACP

OCTOBER 9, 2014, 11 A.M.
WATSON FINE ARTS CENTER

From 2002, Dr. Richard Carmona was nominated by the President and unanimously confirmed by the United States Senate to become the 17th Surgeon General of the United States. Dr. Carmona was selected because of his extensive experience in public health, clinical sciences, healthcare management, preparedness and his commitment to prevention as an effective means to improve public health and reduce healthcare costs, while improving the quality and quantity of life.

Dr. Adena Williams Loston
and the President's Lecture Series Committee
cordially invite you to attend the St. Philip's College

PRESIDENT'S LECTURE SERIES



DAYMOND JOHN | SHARK TANK
Feb. 13, 2014 • 11 AM


Iconic, global, entrepreneur and star of ABC reality series Shark Tank.

ST. PHILIP'S COLLEGE
PRESIDENT'S LECTURE SERIES

Grace (Gealey) Byers

Advocate and Actress, FOX's *Empire*
February 16, 2017
11 a.m. | Watson Fine Arts Theater

ALAMO.EDU/SPC/PLS



ALAMO COLLEGES
ST. PHILIP'S COLLEGE

Community Partners

Cowboy Breakfast Foundation



- Provide students real world experience
- Provide student scholarships

Masons of San Antonio



- Conduct cornerstone Ceremonies
- Provide student scholarship
- Dr. Loston received the Community Builder Award

Innovation: Good Samaritan Veterans Outreach Transition Center

Offers referral services, job support/training and transitional services to veterans, retired and active military



Community Engagement

Culturefest



Homecoming



SAGE 2017 Community Partner Award



Little Dresses for Africa



*SPC a "Point of Pride in the
Community"*



*Great People
Great Teams
Great Results*