

# Student Success Newsletter

St. Philip's College, 1801 Martin Luther King Dr., San Antonio, TX 78203

St. Philip's College - Southwest Campus, 800 Quintana Rd., San Antonio, TX 78211

## Student Success Leadership Team



Dr. Mordecai Brownlee  
Vice President for Student Success



Dr. Paul Machen, II  
Dean for Student Success



Christina Cortez  
Dean for Student Success

**Editors:** Rosalinda Rivas, Eitandria Tello

## Quality Enhancement Plan – Ethical Decision-Making

St. Philip's College is accredited by the Southern Association of Colleges and Schools Commission on Colleges (SACSCOC). Part of this process is the QEP (Quality Enhancement Plan) to promote student success. Our QEP topic is Ethical Decision-Making.

QEP Focus: Ethical decision-making is the ability to connect values and choices to actions and consequences.

QEP Goal: Students engage in specific measurable academic activities to enhance their ethical decision-making skills.

### Ethical Decision-Making Process:

- \*Stop and think to determine the facts.
- \*Identify the options.
- \*Consider consequences for yourself and others.
- \*Make an ethical choice and take appropriate action.



## MESSAGE FROM OUR VICE-PRESIDENT:

Happy February St. Philip's College –

February is a time when we all begin to settle into our courses and have a better understanding of the demands associated with the semester. It also is a great time to begin to diversify ourselves by participating in one of our many student organizations or signing-up to participate in a service learning opportunity. I encourage you to take advantage of a new opportunity and expand your growth opportunities.

**Dr. Mordecai Ian Brownlee**  
Vice President for Student Success  
St. Philip's College

## Student Success in the SLC – MLK Campus

For more information, contact Charleen Brammer at 210-486-2468 or 210-486-2275.

### SLC 102 Point of Contact

SPC Safe **SPACE** Advocacy Center  
Counseling Services  
Social Services Assistance  
Disability Services  
Service Learning/Financial Literacy  
Student Conduct/Title IX Programs  
Violence Prevention Grant

Sasha Wilhelm  
Sasha Wilhelm  
Sasha Wilhelm  
Maria Botello  
Elizabeth Castillo  
John Martin  
James Cooper

### SLC 127 Point of Contact

SPC Health Center

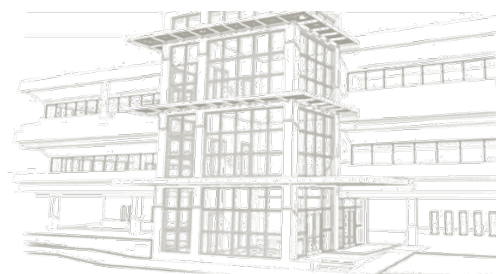
Elijah Casillas

## Spring 2020 Hours of Operation

Monday, Tuesday, Thursday, Friday	8:00 am – 5:00 pm
Wednesday	8:00 am – 7:00 pm
First Saturday of the Month	9:00 am – 1:00 pm

## Important Dates

February 3	First Day of Classes (Start Two)
February 5	Census Date (Regular 16-Week)
February 14	Census Date (Start Two)
February 28	Last Day to Withdraw (Flex I)





# St. Philip's College AlamoCARES

For more information, contact Dr. Mordecai Brownlee, Vice President of Student Success at 210-486-2252.

St. Philip's College is committed to providing a supportive learning environment and to fostering safe, healthy relationships among our students. In this effort, Alamo Colleges District initiated AlamoCARES, a prevention, education and support program regarding dating violence, domestic violence, sexual assault and stalking. It is our sincere hope that AlamoCARES will empower you to make well-informed decisions about life issues that affect your college years and beyond.

Within the AlamoCARES site, you will find information on rights granted by **Title IX** and resources to help educate and assist you when dealing with harassment and sexual violence. Coming soon are events, training and opportunities to bring awareness when dealing with difficult issues and creating discussion opportunities with students. Visit us at <http://alamo.edu/spc/alamocares/> for more information.

The Alamo Colleges District encourage individuals to bring forward information/complaints about sexual harassment and sexual violence. **Retaliation** against any **individual who reports or participates** in the investigation of alleged violations is **strictly forbidden** and will be **enforced** by the College administration.

If you believe you have experienced **Sexual Misconduct** you may consider the following options:

- Contact **Campus Police** at 210-485-0099 (non-emergency) or 210-485-0911 (emergency)
- Seek **medical attention** at a hospital or with a physician
- **Report the incident** at [www.alamo.edu/TitleIXCoordinator/](http://www.alamo.edu/TitleIXCoordinator/) (call John Martin 210-486-2746)
- **Contact SPC Counseling Services** at 210-486-2333 (for confidential counseling and or referrals)
- Contact **parents, relatives or close friends** for support

**H.1.1 Equal Education and Employment Opportunities (Policy)** [www.alamo.edu/district/policies/](http://www.alamo.edu/district/policies/)  
AlamoCARES has additional **Title IX** information and resources at: [www.alamo.edu/spc/AlamoCARES](http://www.alamo.edu/spc/AlamoCARES)

## **ATTENTION STUDENTS!**

All entering freshmen, former and transfer students are now required to complete **“Sexual Assault Prevention for Community Colleges”**. Sexual Assault Prevention for Community Colleges is an online survey and course addressing critical life skills. The training is our way of informing St. Philip's College students about **Title IX** standards, reporting violations and resources available. **All entering freshmen, former and transfer students are required to complete the training before the end of their first semester of classes at St. Philip's College (to avoid a registration hold being placed on their account).**

To access the Sexual Assault Prevention for Community Colleges training:

1. Always sign in through ACES at <https://alamoaces.alamo.edu>.
2. Look for the AlamoCARES box on the Student tab and read the important message before accessing the course. Note: an alternative training is available; see your Vice President for Student Success for assistance.
3. Click on the link provided, and complete the confidential pre-survey at the start of the course. The Alamo Colleges District does not receive a copy of your responses.
4. The quiz at the end of the course is required to document your completion, but the score is not recorded and will not impact you in any way. Completion is documented on your student record.

**You Have the Right to Feel Safe.**

# Classroom Emergency/Safety Procedures Student Handout

In order to ensure your safety, please review the following material very carefully.

## Safety/Emergency Information

- Location of nearest fire extinguisher and pull station
- Location of the nearest exit(s)
- At least two emergency exit routes out of building and assembly location
- Location of severe weather shelter space for building
- Location of nearest Automatic External Defibrillator (AED) and first aid kit
- Personal Protective Equipment (PPE) needed for class if required
- Safety shower/eye wash station if applicable
- Sign up for Alamo Alerts in ACES

## Door Lock Devices

- For your safety, new door lock devices have been installed in all classrooms for use during a Lockdown event. Practice using the new safety door locks.

## Lockdown/Active Shooter

- Remember, **RUN, HIDE, FIGHT!**
- **RUN:** Escape the building or area if safe to do so
- **HIDE:** If you cannot get out of the building, identify the best place to hide (away from windows)
- Lock/Barricade the doors/windows
- Turn off lights
- Stay quiet and silence your cellphone
- Stay in place until "All Clear" is issued or police remove you from your location
- **FIGHT:** If the aggressor enters your room, FIGHT!
- Do not open doors for anyone



## Evacuation/Fire

- In the event of a fire, evacuate the building and proceed to the assembly area
- If the Fire Alarm has not already been activated, pull the alarm at nearest pull station
- DO NOT use the elevators
- Follow ACPD and Building Action Team (BAT) instructions
- DO NOT return to the building until All Clear is issued

## Shelter in Place/Severe Weather (Tornado)

- Move to the interior hallways or rooms of the building on lowest floor possible
- Stay away from all windows and doors
- Await further directions from ACPD or Building Action Team (BAT) member



## Medical Emergencies

- Please remain calm and contact Alamo College Police Department or call 911
- Provide any assistance you are qualified to perform



# Academic and Career Advising Services (MLK Campus)

For more information contact Arianna Lay at 210-486-2381.

**Event:** New Student Orientation (February 4 – May 27)  
**Date/Time:** Tuesdays 9:00 am – 12:00 pm  
 Wednesdays 3:00 pm – 6:00 pm  
**Location:** Center for Learning Resources (CLR), Room 108  
**Summary:** You can register for New Student Orientation at <https://spcweb.alamo.edu/StudentSuccess/Registration.aspx>.

**Event:** Historically Black Colleges & Universities (HBCU) and Hispanic Serving Institutions (HSI) College Fair  
**Date/Time:** February 11 9:00 am – 12:00 pm  
**Location:** Campus Center (CC), Heritage Room  
**Summary:** Students will have the opportunity to meet with representatives from HBCUs and HSIs to determine what these schools have to offer them for advanced education. SPC, both a HBCU and a HIS, is nationally distinctive and seamless transfer to your school of choice is the ultimate goal.

**Event:** For the LOVE of TEAS  
**Date/Time:** February 13 10:00 am – 1:00 pm  
**Location:** Center for Health Professionals (CHP), Atrium  
**Summary:** Institute 3 Advisors supporting student success by helping students coordinate for TEAS Exam preparation resources, meet staff that can assist, visit with a university that requires TEAS and various community partners promoting student success. Free donuts and pizza. Enter to win a bookstore gift voucher. For more information contact Nathaniel Martinez at [nmartinez324@alamo.edu](mailto:nmartinez324@alamo.edu), or Teresa Hopwood at [thopwood2@alamo.edu](mailto:thopwood2@alamo.edu).

*Do you need to take the TEAS?*




**Be Wise, Get Advised: Contact your Certified Advisor today. Below are the steps to identify who your advisor is:**

1. Log into ACES
2. Click on the **My Page** tab (4th tab from the left)
3. Under **Academic Profile** (on the left) select the **current term** and press **Go**
4. Your advisor's name will appear under "Advisors"
5. Visit your advisor

**Banner ID and Photo ID Required!**  
**Hours of Operation for Appointment Based Academic Advising:**  
 Monday - Thursday: 8:00 am – 5:00 pm

**Hours of Operation for Walk-In Academic Advising:**  
 Wednesday: 5:00 pm – 7:00 pm  
 Friday: 1:00 pm – 5:00 pm  
 First Saturday of the month: 9:00 am – 1:00 pm

 <b>ALAMO COLLEGES</b> <b>AlamoINSTITUTES</b> <small>An organization of six career pathways designed for students who have key interests, such as, but not limited to the following areas:</small>	
<b>Creative &amp; Communication Arts Institute</b>	<i>The Arts, Audio/Video Technology and Communications*</i>
<b>Business &amp; Entrepreneurship Institute</b>	<i>Business Management &amp; Administration, Finance, Hospitality &amp; Tourism, and Marketing*</i>
<b>Health &amp; Biosciences Institute</b>	<i>Health Sciences*</i>
<b>Advanced Manufacturing &amp; Logistics Institute</b>	<i>Architecture, Construction, Manufacturing, Transportation, Distribution &amp; Logistics*</i>
<b>Public Service Institute</b>	<i>Education, Training, Government, Public Administration, Human Services, Law, Public Safety, Correction and Security*</i>
<b>Science &amp; Technology Institute</b>	<i>Agriculture, Food &amp; Natural Resources, Information Technology, Science, Technology, Engineering and Mathematics*</i>

# Academic and Career Advising Services (continued)

For more information contact Arianna Lay at 210-486-2381.

## Institute 1: Creative & Communication Arts

Konnie Harper-Thompson

[kharpert-thompson@alamo.edu](mailto:kharpert-thompson@alamo.edu)

## Institute 2: Business & Entrepreneurship

Yolanda Ward [yward@alamo.edu](mailto:yward@alamo.edu)

James Satchell [jsatchell@alamo.edu](mailto:jsatchell@alamo.edu)

Joseph Hernandez [jhernandez31@alamo.edu](mailto:jhernandez31@alamo.edu)

## Institute 3: Health & Biosciences

Janet Hart [jhart26@alamo.edu](mailto:jhart26@alamo.edu)

Frances Calderon [fcalderson4@alamo.edu](mailto:fcalderson4@alamo.edu)

Irma Lopez [isanchez17@alamo.edu](mailto:isanchez17@alamo.edu)

Teresa Hopwood [thopwood2@alamo.edu](mailto:thopwood2@alamo.edu)

Tricia McElligott [tmcelligott@alamo.edu](mailto:tmcelligott@alamo.edu)

Nathaniel Martinez [nmartinez324@alamo.edu](mailto:nmartinez324@alamo.edu)

Doug Gable [dgable@alamo.edu](mailto:dgable@alamo.edu)

Jessica Perez [jperez1494@alamo.edu](mailto:jperez1494@alamo.edu)

Juan Venegas [jvenegas21@alamo.edu](mailto:jvenegas21@alamo.edu)

## Institute 4: Advanced Manufacturing & Logistics Automotive Technology (MLK Campus)

Yvonne Benton [ybenton@alamo.edu](mailto:ybenton@alamo.edu)

Christine Saucedo [csauceda1@alamo.edu](mailto:csauceda1@alamo.edu)

## Institute 4: Advanced Manufacturing & Logistics (Southwest Campus)

Blair Hannon [bhannon@alamo.edu](mailto:bhannon@alamo.edu)

Sarah Ramirez [sramirez260@alamo.edu](mailto:sramirez260@alamo.edu)

Carlos Solis [csolis@alamo.edu](mailto:csolis@alamo.edu)

Jennifer Salmeron [jleal@alamo.edu](mailto:jleal@alamo.edu)

## Institute 5: Public Service

Christine Saucedo [csauceda1@alamo.edu](mailto:csauceda1@alamo.edu)

Konnie Harper-Thompson [kharpert-thompson@alamo.edu](mailto:kharpert-thompson@alamo.edu)

## Institute 6: Science & Technology

Meredith Bess [mbess@alamo.edu](mailto:mbess@alamo.edu)

Gloria Jose [gjose@alamo.edu](mailto:gjose@alamo.edu)

Advising welcomes its newest advisor, Xaviera Toussaint!

## Alumni Affairs (MLK Campus)

For more information contact Dr. Sharon Crockett-Ray at 210-486-2887.

If you are looking for a way to stay in touch with SPC, there is no better way than joining the Alumni and Friends Association.

Membership information is at <https://www.alamo.edu/spc/alumni-affairs/>.

## Bae-B-Safe (MLK Campus)

For more information contact Tracy Watts at 210-486-2538.



BAE-B-SAFE works to support educational success and increase graduation rates by preventing unplanned pregnancies and preparing young people with life skills to protect their future. Empower and educate yourself about healthy sexual behaviors.

Participate in one of our programs to earn gift cards! Visit us in the Center for Health Professionals (CHP) Building, Room 202A. (Must be 14-19 years of age to participate.)

## Business Office (MLK Campus)

For more information contact Sofia Zavala at 210-486-2247.

The Business Office staff can answer questions about installment plans, billing, or tuition discounts and waivers. For more information call Sofia Zavala (210-486-2247), email [dst-vbo2@alamo.edu](mailto:dst-vbo2@alamo.edu), or visit <https://www.alamo.edu/district/business-office/>.

The U.S. Census is hiring. If you have a work permit you can work for the Census. Apply at: <https://2020census.gov/en/jobs.html>

The National Domestic Violence  
**HOTLINE**  
1.800.799.SAFE (7233) • 1.800.787.3224 (TTY)

## Child Development Center (MLK Campus)

For more information contact Monica Guzman at 210-486-2501.

The Child Development Center (CDC), located at 2207 Wyoming Dr. (78203), is now providing **Summer Child Care**. Payment assistance and subsidized rates are available for SPC students who qualify. For more information call us at 210-486-2500 or visit <https://www.alamo.edu/spc/child-dev-center/>.



## Counseling Services (MLK Campus)

For more information contact Sasha Wilhelm at 210-486-2827.

**DACA Allies** - Find more resources (such as access to scholarships and legal assistance) for Deferred Action for Childhood Arrivals (DACA) at <https://www.alamo.edu/spc/admissions/specific-populations/daca/> or speak confidentially to District Coordinator Carmen de Luna-Jones (210-485-2080), SPC Director Elizabeth Castillo (210-486-2473), or SPC Counselor Rosalinda Rivas (210-486-2117).

**Event:** Personal Counseling – A Safe Space

**Date/Time:** Monday, Tuesday, Thursday, Friday 8:00 am – 5:00 pm  
Wednesday 8:00 am – 7:00 pm  
First Saturday of the Month 9:00 am – 1:00 pm

**Location:** Sutton Learning Center (SLC), Suite 102

**Summary:** College students talk to Counselors about many different types of issues like career concerns, anxiety, academic stress, relationships, stress associated with deportation/family legal status, trauma, coping with illness, procrastination, and more. Counselors also provide referrals and community resources. Make an appointment with a Counselor at 210-486-2333 if you want to talk about strategies that can help you manage your stress, school and life activities. See important links on our website: <https://www.alamo.edu/spc/experience-spc/current-students/support-centers/counseling-services/>.

Substance Abuse and Mental Health Services Administration (SAMHSA)

1-800-662-HELP (4357)

TTY: 1-800-487-4889

Treatment referral and info 24/7

[www.samhsa.gov/find-help/national-helpline](http://www.samhsa.gov/find-help/national-helpline)

Do you think you are the only one who is worried about your housing situation? About 50% of students who live off-campus experience poverty and many of them lack adequate housing. **You are not alone.**

Contact [Counseling Services](#), so we can share local resources with you.

Come by or call for an appointment.

(210) 486-2333

MLK: Sutton Learning Ctr., Room 102

SWC: LIFEspace Ctr., Bldg. 1, Room A-135

## The SPC Safe SPACE Student Success & Advocacy Ctr. (MLK Campus)

For more information contact Sasha Wilhelm at 210-486-2827.

**Event:** **Helping Students Succeed at SPC**

**Location:** Sutton Learning Center (SLC), Suite 102

**Summary:** The SPC Safe **SPACE** Student Success & Advocacy Center provides a Food Pantry, social services assistance, and possible access to a one-time emergency aid program through Trellis. For more information contact Sasha Wilhelm at 210-486-2827.

**Free Starbucks items available every Tue. & Wed. while supplies last**



# The SPC Safe **SPACE** Student Success & Advocacy Ctr. (continued)

For more information contact Sasha Wilhelm at 210-486-2827.

**Event:** Social Services Assistance

**Date/Time:** Monday and Friday 8:00 am – 5:00 pm  
Wednesday 10:00 am – 5:00 pm  
(till 7:00 pm 1<sup>st</sup> Wednesday of the month)

**Location:** Sutton Learning Center (SLC), Room 101

**Summary:** St. Philip's College is expanding its Advocacy Center services to better meet the needs of our students and community. Our newest office, Social Services Assistance, helps students and local families by assessing state of Texas federal benefits. For more information contact Sandra Jones at 210-486-2824.

**New Service!**

## Disability Services (MLK Campus)

For more information contact Maria Botello at 210-486-2199.



**Event:** **Schedule your appointment.** To be eligible for disability-related services, students must have a disability as defined by the **Americans with Disabilities Act of 1990 (ADA)** and **Section 504 of the Rehabilitation Act of 1973.**

**Date/Time:** Monday, Tuesday, Thursday, Friday 8:00 am – 5:00 pm  
Wednesday 8:00 am – 7:00 pm  
First Saturday of the Month 9:00 am – 1:00 pm

**Location:** Sutton Learning Center (SLC), Suite 102

**Summary:** Disability Services ensures reasonable academic support to qualifying students with disabilities. We ensure our students have access to the latest information and technologies. For more information and access to the online registration system, visit <https://www.alamo.edu/spc/experience-spc/current-students/support-centers/disability-services/>.

### Inclement Weather Closure

Please be safe and take precaution. For the most up-to-date information on college closures, go to <https://www.alamo.edu/spc/about-spc/compliance/emergency-information/alamo-alert/> or check social media channels.

The weather line is: (210) 485-0189

**GED Face-to-Face classes, GED Online (English and Spanish), and ESL classes offered at St. Philip's College**

For more information visit:  
<https://www.alamo.edu/spc/experience-spc/community/community-resources/ged/ged-face-to-face-preparation-english-and-spanish/>



Your student ID is your VIA U-Pass

Alamo Colleges District has partnered with VIA to offer the new U-Pass to all students, faculty and staff. For the Spring 2019 semester, your Alamo Colleges Student ID is your U-Pass to ride on all VIA mainline bus routes. Just show your Student ID to the bus operator when boarding.

**Unlimited bus ridership!**  
For more information visit

<https://www.alamo.edu/news-events/news/2019/01-january/via-buss-pass/>

## ROAD CLOSURES:

**St. Philip's College is experiencing growth!** Find all of the latest updates for MLK and SWC at <https://www.alamo.edu/spc/cip>.



- Road closures – The corner of Mittman and Dakota streets; and from the circular drive on Wyoming St. to the intersection of Walters St.
- Walkway closure – Sidewalk between the Campus Center Bldg. and Norris Technical Bldg. will be closed.

## St. Philip's College's



Did you have a great experience with a service offered at the college or do you want something addressed? You can now do that with our "Feed the Tiger" form. We want to hear from you and address your concerns. Click on the orange button at <http://spcweb.alamo.edu/feedback/index.html>.

## Good Samaritan Veteran's Outreach & Transition Center (MLK Campus)

For more information contact William Moseley at 210-486-2506.

The GSVOTC, located at 202 Connelly St. (near the St. Philip's College campus), provides free personalized services to active duty service members, veterans, their families and the community. This includes referral services, job training, financial counseling, health and wellness, business start-up, and academic advisement. We provide no cost legal services by a licensed attorney. See us Monday-Friday 8 a.m. - 5 p.m.



**The Selective Service System reminds all men to register upon their 18<sup>th</sup> birthdays.**

This is the law. Register while you are applying for federal student aid (check "Register Me" on FAFSA). You may be denied benefits or a job if you have not registered. Late registrations are accepted until a man's 26<sup>th</sup> birthday. A person's citizenship status is not shared. Registration forms are available at <https://www.sss.gov>, and any U.S. Post Office.

## International Student Services (MLK Campus)

For more information contact Meredith Bess at 210-486-2147.

**Event:** Resources for F-1 and M-1 visa holders  
**Location:** Welcome Enrollment Center (WEC), Room 106-J  
**Summary:** Learn more at <https://www.alamo.edu/spc/admissions/specific-populations/international-student-services/>.

- Immigration matters, such as obtaining F-1 student visas, maintaining full-time enrollment, transferring administration of your SEVIS I-20 record between schools, and traveling outside of the United States
- Academic advising available to assist ELL and international students with course and program planning
- Employment restrictions and options and obtaining work authorization
- Adjustment to St. Philip's College and to life in San Antonio and the United States
- Provide letters for verification of your F-1 status for various purposes, such as obtaining a Texas driver's license or identification card

### CALL FOR 24-HR HELP

National Human  
Trafficking Hotline:  
1 (888) 373-7888

San Antonio  
Rape Crisis Center:  
(210) 349-7273

Centro Seguro  
Drop In Center:  
(210) 340-8090

San Antonio Police  
(Non-Emergency):  
(210) 207-7273





**SPCs E. L. Turbon Student Center receives “Star of Distinction for Excellence Award” in 2019-2020 School of Architecture**



**St. Philip's Early College High School Earns 'A' Rating from the Texas Education Agency (TEA)**

## Library Resources and Services (MLK Campus)

For more information contact April Schramm (210-486-2357), or Andrew Rivera (210-486-2564).

**Event:** Spring Hours  
**Date/Time:** Monday – Thursday 7:00 am – 8:00 pm  
 Friday 7:00 am – 5:00 pm  
 Saturday 9:00 am – 3:00 pm

**Location:** Center for Learning Resources (CLR)

**Summary:** For assistance with the databases, type your question in the **ASK US** section found at the top of the library homepage: <https://www.alamo.edu/spc/library>.

[Ask Us](#)

**Event:** Library Survey and Valentine's Day Cookie Decorating  
**Date/Time:** February 13 10:00 am – 1:00 pm  
**Location:** Center for Learning Resources (CLR), Library  
**Summary:** Come join the Library for some Pre-Valentine's Day fun. We will be decorating cookies, and you can help improve the library by taking our survey (click on the **Ask Us** and **Provide Library Services Feedback** links, or go to <https://spcguide.libguides.com/c.php?g=478209&p=3269708>).



## Military Support Services (Offices at Military Installations)

For more information contact Betsy Hamilton at 210-486-2610.

The Military Support Services (MSS) Team is honored to serve our Active Duty Military, National Guard, Reserve students and their dependents at SPC and at Joint Base San Antonio. Email the Team at [dst-military@alamo.edu](mailto:dst-military@alamo.edu) or phone (210) 486-2001.

### Available Services includes, but is not limited to:

- Academic and career exploration and information
- Admission and enrollment services
- Placement and Texas Success Initiative (TSI) questions
- Residency classification issues
- ACES (Student Portal) navigation assistance
- Basic financial aid assistance
- Tuition Assistance (TA) and MyCAA\* funding help and information
- Preliminary advisement, Military and MyCAA\* education and training plans
- Graduation applications
- Referrals

Offerings for our Military and Veteran Families:

- Military (NSO) at JBSA sites for those using TA/MyCAA (call 210-486-2001 to register)
- [RESERVED Courses at Fort Sam Houston, Lackland and Randolph](#)
- [RESERVED Online Courses](#)
- [RESERVED Science Courses](#) –see schedule in ACES (**Reserved Mil/Vet/Dependents**)
- [Military Spouse Career Advancement Account](#)



# Military Support Services (continued)

For more information contact Betsy Hamilton at 210-486-2610.

For more information, view our webpages:

**SPC Food Pantry Offers  
FREE food from Starbucks every  
Tues. & Wed. while supplies last  
(Go to SLC 102)**

## JBSA Lackland

[alamo.edu/Lackland](http://alamo.edu/Lackland)  
Air Force Education Ctr.  
Bldg. 5725, Room 144  
Mon-Fri 0800-1600

## JBSA Fort Sam Houston

[alamo.edu/fortsam](http://alamo.edu/fortsam)  
Army Education Center  
Bldg. 2248, Room 206  
Mon-Fri 0730-1530

## JBSA Randolph

[alamo.edu/randolph](http://alamo.edu/randolph)  
Air Force Education Center  
Bldg. 208, Room 10  
Mon-Fri 0800-1600

## GSVOTC

202 Connelly St.  
Room 110D  
Mon-Fri 0800-1700

**Event:** Physical Therapist Assistant Program Info Session  
**Date/Time:** February 11 5:00 pm – 6:00 pm  
**Location:** Center for Health Professions (CHP)

Learn about careers in physical therapy, SPC's Physical Therapist Assistant Program, and how to apply to the program. For more information email Kris Aguilar at [kaguilar19@alamo.edu](mailto:kaguilar19@alamo.edu).



## CENSUS 101: WHAT YOU NEED TO KNOW

The 2020 Census is closer than you think!  
Here's a quick refresher of what it is and why it's essential that everyone is counted.

### Everyone counts.

The census counts every person living in the U.S. once, only once, and in the right place.



### It's about fair representation.

Every 10 years, the results of the census are used to reapportion the House of Representatives, determining how many seats each state gets.



### It's in the constitution.

The U.S. Constitution mandates that everyone in the country be counted every 10 years. The first census was in 1790.

### It's about \$675 billion.

The distribution of more than \$675 billion in federal funds, grants and support to states, counties and communities are based on census data.

That money is spent on schools, hospitals, roads, public works and other vital programs.



### It's about redistricting.

After each decade's census, state officials redraw the boundaries of the congressional and state legislative districts in their states to account for population shifts.

### Taking part is your civic duty.

Completing the census is mandatory: it's a way to participate in our democracy and say "I COUNT!"



## Your response matters:

### CENSUS 2020:

It is estimated that an undercount of Texas' population by even 1% in 2020 could result in a \$300 million loss of federal funding. To learn how Census data impacts you and your community [click here](#), or visit <https://2020census.gov/>.

## Did you know . . .

By law, the Census Bureau cannot release any identifiable information about you, your home, or your business, even to law enforcement agencies. That's protected under Title 13 of the U.S. Code.

When you respond to the census, your answers are kept anonymous. They are used only to produce statistics. To learn more about how we protect your privacy [click here](#), or visit <https://2020census.gov/>.

## Phi Theta Kappa Honor Society (MLK Campus)

For more information contact Maria Botello at 210-486-2199.



Students who have a cumulative (overall) GPA of 3.5 or higher and have completed at least 12 college hours are qualified! Graduate with honors by accepting membership! For more information about this award winning honor society, contact a Chapter advisor at <https://www.alamo.edu/spc/experience-spc/campus-life/get-involved/honor-society/> and visit the organization's website <http://www.ptk.org/Join.aspx>.


## Records and Registration (MLK Campus)

For more information contact Tracy Shelton at 210-486-2292.

Contact staff in Records and Registration or Admissions, to get answers about FERPA, cumulative hours, grades, and GPA. The staff is dedicated to your success as a student. Let us know how we can help by calling 210-486-2700, or visiting <https://www.alamo.edu/experience-the-alamo-colleges/current-students/transcripts-and-records/>.

The last day for **Incomplete "I" Grades** to be completed are as follows:

<u>Due Date</u>	<u>For all parts of the term</u>
April 13, 2020	Fall 2019



The U.S. Census is hiring. If you have a work permit you can work for the Census. Apply online:  
<https://2020census.gov/en/jobs.html>

<b>Event:</b>	<b>Respiratory Therapy Info Session</b>
<b>Date/Time:</b>	February 19                      1:00 pm – 2:00 pm
<b>Location:</b>	Center for Health Professions (CHP), Room 321B

Respiratory Care involves the assessment and therapeutic management of those patients diagnosed with cardiopulmonary disease. For more information contact Christa Mitchell at [cmitchell86@alamo.edu](mailto:cmitchell86@alamo.edu).



## Strategies of Behavioral Intervention (MLK Campus)

For more information contact Maria Botello at 210-486-2199.

The Strategies of Behavioral Intervention (SOBI) mission is to promote student, faculty and staff success and campus safety. The SOBI protocol guides our college community to recognize, prevent and respond to incidents. Learn more at <https://www.alamo.edu/spc/about-spc/compliance/strategies-of-behavioral-intervention-sobi/>.



**Tiger PAWS:** Get published and win prizes!  
Be an editor and compete for scholarships!  
**Tiger PAWS** literary art journal is seeking an editor and student submissions of writing and artwork.  
Editorial Staff application deadline: February 28  
Submission deadline: March 6  
Click [here](#) to learn more, or visit <https://www.alamo.edu/spc/experience-spc/campus-life/get-involved/clubs-and-organizations/tigerpaws/>.

## SPC Community Events (MLK Campus)

For more information, contact Nina McGrath at 210-486-2704.



**Event:** Voter Registration and Census Information

**Date/Time:** February 4, 11, 18 9:00 am – 1:00 pm

**Location:** Turbon Student Center (TSC), Lobby

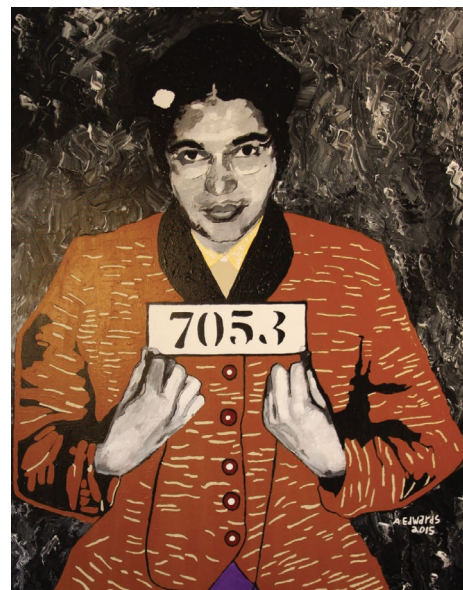
**Summary:** Join us for assistance with voter registration and information on the 2020 Census! Learn more at <https://www.alamo.edu/spc/calendar/2020/february/voter-registrationfeb-18/>.

**Event:** Black History Month - Art Exhibit Opening

**Date/Time:** February 6 11:00 am – 12:00 pm

**Location:** Watson Fine Arts Center (WFAC), Morgan Gallery

**Summary:** The art exhibit features San Antonio native and St. Philip's College alumnus (1970), Anthony Charles Edwards. His work is part of the Harriet and Harmon Kelley Collection of African American Art. In 1995, one of Edwards' artwork, Our Land, Our Home was included in an exhibition at the Smithsonian.



**Event:** Black History Month - San Antonio Wind Youth Ensemble 10<sup>th</sup> Anniversary Concert

**Date/Time:** February 8 7:00 pm

**Location:** Watson Fine Arts Center (WFAC), Auditorium

**Summary:** The San Antonio Youth Wind Ensemble (SAYWE) was founded in 2010 as the premier honor wind ensemble for youth in San Antonio and surrounding areas. SAYWE's home is St. Philip's College.

**Event:** Black History Month - Pieces of Me: Readings of Toni Morrison

**Date/Time:** February 18 12:00 pm – 2:30 pm

**Location:** Turbon Student Center (TSC), Lobby

**Summary:** In 1993, Toni Morrison became the first African American to win the Nobel Prize in Literature. Her novels, which center black characters and communities, are among the most celebrated works of contemporary literature. This event is held in honor of the late Nobel Laureate's birthday. Light refreshments will be served.

**Event:** Black History Month - Soul Food Taste

**Date/Time:** February 25 11:45 am

**Location:** Campus Center (CC), Heritage Room

**Summary:** This is a culinary event for Black History Month. Tickets are sold online via debit or credit card.



**Black History Month 2020**  
marks the 150<sup>th</sup> anniversary of the Fifteenth Amendment (1870) which gave black men the right to vote. Celebrate Black History Month!

## Student Conduct/Title IX (MLK Campus)

For more information contact John Martin at 210-486-2746.

All entering freshmen, former and transfer students are now required to complete "Sexual Assault Prevention for Community Colleges". Registration holds have been placed on student accounts who still need this training. The exam at the end of the training is required to document your completion.

To complete the training:

1. Login to ACES at <https://alamoaces.alamo.edu>
2. Select the Student Tab
3. Click the link located in the AlamoCARES box to begin the training



Abuse can look different for immigrants. Call our confidential 24-hour bilingual crisis/domestic violence helpline: 651.772.1611

<https://casadeesperanza.org/>

## AlamoPROMISE Workshops - Complete your steps by Feb. 14!

Contact Us: Admissions, Business Office, Student Financial Aid at 210-21ALAMO (210-212-5266), or call Toll Free at 1-844-20ALAMO (1-844-202-5266).

The AlamoPROMISE Scholar Program provides for no-cost tuition and mandatory fees for seniors graduating in 2020 from one of the 25 participating high schools.

The Alamo Colleges is hosting special workshops to assist high school seniors with their AlamoPROMISE applications. **The Feb. 14<sup>th</sup> deadline to complete the three steps is fast approaching.**



1. Start by Saving Your Seat ([Save Your Seat Form](#) confirms your interest)
2. File for Financial Aid (Free application for FAFSA or TASFA)
3. Apply to an ACD College ([www.applytexas.org](http://www.applytexas.org))



Let us help with completing the steps to becoming an AlamoPROMISE scholar. Sessions will help students and their families complete their ApplyTexas and Free Application for Federal Student Aid (FAFSA), or Texas Application for State Financial Aid (TASFA) forms. Join us at one of these events to work directly with our admissions team. View workshop dates and locations at <https://www.alamo.edu/promise/resources/promiseworkshops/>.

## Student Financial Aid Office (MLK Campus)

For more information contact Grace Zapata 210-486-2269.

**College Connection Financial Aid Saturdays** are held in the Welcome Center (WEC), 106. All students needing assistance completing the FAFSA/TASFA are invited to attend. See session dates in red.

For more **Financial Aid news** call 210-21ALAMO (210-212-5266), or call Toll Free at 1-844-20ALAMO (1-844-202-5266), email [dst-sfs@alamo.edu](mailto:dst-sfs@alamo.edu), or visit <https://www.alamo.edu/spc/admissions/pay-for-college/financial-aid/>. Please have or include your Banner ID when calling or emailing.

**DREAMers**

Complete the **TASFA** (Texas Application for State Financial Aid) today. Need assistance applying for college, state aid or scholarships? Our staff can assist you at these Community Education Training Centers:

**Brackenridge (Eastside) Center**, 532 N. Center (78202), 210-485-0280

**Harlandale (Southside) Center**, 901 March Avenue (78214), 210-989-5999

[www.alamo.edu/district/etc](http://www.alamo.edu/district/etc)  
[www.alamo.edu/district/daca](http://www.alamo.edu/district/daca)

## SPC Health Center (MLK Campus)

For more information contact Eliah Casillas at 210-486-2222.

**Event:** Blood Drive – Kick-Off Event  
**Date/Time:** February 10 9:00 am – 5:00 pm  
**Location:** Center for Health Professions (CHP), Atrium  
**Summary:** Come support a great cause as we kick-off this important collaboration with the South Texas Blood and Tissue Center and the San Antonio Food Bank.

**Event:** Blood Drive – South Texas Blood & Tissue Center  
**Date/Time:** February 26 9:00 am – 5:00 pm  
**Location:** Center for Health Professions (CHP), Atrium  
**Summary:** Alamo Colleges District/SPC has partnered with the Blood Bank and the San Antonio Food Bank. The Food Bank will donate one pound of food for each unit of blood donated. The food is for our Advocacy Center on both campuses.

**The Porch Campus Ministry  
 at St. Philip's College**  
 525 S. Mittman St.  
 Contact: Winnie Yeh, 1-281-749-1201

Weekly Events:  
 Prayer Time – Tuesday/Thursday 11-11:30 am (The Porch)  
 Women's Bible Study – Thursday 12-1pm (The Porch)  
 Sojourner's Bible Study – Wednesday 12-1 pm (TSC #204)

## Student Life (MLK Campus)

For more information contact Dr. Angela McPherson Williams at 210-486-2090.

**Event:** Spirit Day with Birthday Cake  
**Date/Time:** February 5 11:00 am – 1:00 pm  
**Location:** Turbon Student Center (TSC), 1<sup>st</sup> Floor  
**Summary:** Wear your favorite St. Philip's shirt or wear our school colors (royal blue and white)!

**Event:** Lady Tiger Basketball Game vs. Northwest Vista College (NVC)  
**Date/Time:** February 5 6:00 pm – 8:00 pm  
**Location:** Northwest Vista College, Huisache Hall (HH)  
**Summary:** Come cheer and support the Women's basketball team! Students, faculty, staff and SPC sports fans are invited to attend.

**Event:** Tiger Basketball Game vs. Southwest Texas Junior College (SWJTC)  
**Date/Time:** February 5 8:00 pm – 10:00 pm  
**Location:** SWJTC, La Forge Hall, Gymnasium  
**Summary:** Come cheer and support the Men's basketball team! Students, faculty, staff and SPC sports fans are invited to attend.



### COLLEGE CONNECTION FINANCIAL AID SATURDAYS

Let us help you complete a FAFSA or TASFA!

**SESSIONS | 9:00 AM - 1:00 PM**

OCT	NOV	DEC	FEB	MAR	APR	MAY
5	2	7	1	7	4	2

Students are encouraged to complete the ApplyTexas Application before submitting a FAFSA/TASFA.  
 \*Ensure information submitted on both FAFSA or TASFA match the ApplyTexas Application.  
 \*Students/Parents must use their 2018 Tax Return and/or 2018 Untaxed Income information to complete the 2020 - 2021 FAFSA/TASFA.

[alamo.edu/collegeconnection](http://alamo.edu/collegeconnection)

**SESSIONS ARE HELD AT ALL 5 COLLEGES!**

 Northwest Lakeview College 1201 Kitty Hawk Rd. Universal City, TX 78148 (210) 484-5193 <a href="http://alamo.edu/nlc">alamo.edu/nlc</a> Financial Aid Office (210) 212-5244	 Northwest Vista College 5535 N. Ellison Dr. San Antonio, TX 78251 (210) 484-4300 <a href="http://alamo.edu/nvc">alamo.edu/nvc</a> Financial Aid Office (210) 212-5244	 Palo Alto College 1400 W. Villaret Blvd. San Antonio, TX 78224 (210) 484-3100 <a href="http://alamo.edu/pac">alamo.edu/pac</a> Financial Aid Office (210) 212-5244	 St. Philip's College 1801 Martin Luther King Dr. San Antonio, TX 78203 (210) 484-2150 <a href="http://alamo.edu/spc">alamo.edu/spc</a> Financial Aid Office (210) 212-5244	 San Antonio College 1819 N. Main Ave. San Antonio, TX 78212 (210) 484-9044 <a href="http://alamo.edu/sac">alamo.edu/sac</a> Financial Aid Office (210) 212-5244
--	--	---	---	--

Log into ACES or contact your college Student Financial Aid office  
[alamo.edu/district/financial-aid](http://alamo.edu/district/financial-aid)

09/19



### “Pillar of Knowledge and Character”

SPC President Dr. Adena Williams Loston (center) received the Leadership Legends Award during the Alcorn Alumni Legends Ball, Metro-Jackson Alcorn Alumni Chapter, Inc. The award honors pillars of knowledge and character. Dr. Loston, a 1973 graduate of Alcorn State University (Mississippi), earned a Bachelor of Science degree from the HBCU.

## Student Life (continued)

For more information, contact Dr. Angela McPherson Williams at 210-486-2090.



**Event:** Tiger Volleyball Game vs. Northwest Vista College (NVC)

**Date/Time:** February 6 7:00 pm – 9:00 pm

**Location:** Health & Fitness Center (HFC), Gymnasium

**Summary:** Come cheer for the volleyball team! Students, faculty, staff and SPC sports fans are invited to attend, enjoy entertainment, refreshments from the concessions stand and much more.

**Event:** Lady Tiger Basketball Game vs. Texas A&M San Antonio (TAMUSA)

**Date/Time:** February 12 6:00 pm – 8:00 pm

**Location:** Health & Fitness Center (HFC), Gymnasium

**Summary:** Come cheer and support the Women's basketball team! Students, faculty, staff and SPC sports fans are invited to attend, enjoy entertainment, refreshments from the concessions stand, and much more.

**Event:** Spirit Day

**Date/Time:** February 12, 19, 26 11:00 am – 1:00 pm

**Location:** Turbon Student Center (TSC), Lobby

**Summary:** Wear your favorite St. Philip's shirt or wear school colors – royal blue and white.

**Event:** Tiger Volleyball Game vs. Palo Alto College (PAC)

**Date/Time:** February 13 7:00 pm – 9:00 pm

**Location:** Health & Fitness Center (HFC), Gymnasium

**Summary:** Come cheer for the volleyball team! Students, faculty, staff and SPC sports fans are invited to attend, enjoy entertainment, refreshments from the concessions stand, and much more.

**Event:** Men of SPC

**Date/Time:** February 19 12:00 noon – 1:00 pm

**Location:** Turbon Student Center (TSC), Room 216

**Summary:** All students who participate will be entered in a drawing for an opportunity to win prizes! For more information contact Paul Lede (210-486-2581), or Dr. Paul Machen (210-486-2157)



**Event:** Lady Tiger Basketball Game vs. Palo Alto College (PAC)

**Date/Time:** February 19 6:00 pm – 8:00 pm

**Location:** PAC, Campus Recreation

**Summary:** Come cheer and support the Women's basketball team! Students, faculty, staff and SPC sports fans are invited to attend.

**Event:** Tiger Basketball Game vs. Northeast Lakeview College (NLC)

**Date/Time:** February 19 8:00 pm – 10:00 pm

**Location:** Health & Fitness Center (HFC), Gymnasium

**Summary:** Come cheer and support the Men's basketball team! Students, faculty, staff and SPC sports fans are invited to attend, enjoy entertainment, refreshments from the concessions stand and much more.

**Event:** Lunch and Lead Session

**Date/Time:** February 21 9:00 am – 10:00 am

**Location:** Turbon Student Center (TSC), Room 203/204

**Summary:** Come join us for an engaging hour of leadership, event planning support, and essential updates from the Department of Student Life. Brunch will be provided.



## Student Life (continued)

For more information, contact Dr. Angela McPherson Williams at 210-486-2090.

**Event: Tiger Basketball Game vs. Palo Alto College (PAC)**

**Date/Time:** February 26 8:00 pm – 10:00 pm

**Location:** Health & Fitness Center (HFC), Gymnasium

**Summary:** Come cheer and support the Men's basketball team! Students, faculty, staff and SPC sports fans are invited to attend, enjoy entertainment, refreshments from the concessions stand and much more.

**Event: Lady Tiger Basketball Game vs. Northeast Lakeview College (NLC)**

**Date/Time:** February 26 6:00 pm – 8:00 pm

**Location:** Health & Fitness Center (HFC), Gymnasium

**Summary:** Come cheer and support the Women's basketball team! Students, faculty, staff and SPC sports fans are invited to attend, enjoy entertainment, refreshments from the concessions stand and much more.

**Event: Tiger Volleyball Game vs. San Antonio College (SAC)**

**Date/Time:** February 27 7:00 pm – 9:00 pm

**Location:** Health & Fitness Center (HFC), Gymnasium

**Summary:** Come cheer for the volleyball team! Students, faculty, staff and SPC sports fans are invited to attend, enjoy entertainment, refreshments from the concessions stand and much more.

## Tutoring Services and Service Learning (MLK Campus)

For more information contact Elizabeth Castillo at 210-486-2473.

### DACA Allies

Speak confidentially to District Coordinator Carmen de Luna-Jones (210-485-2080), SPC Director Liz Castillo (210-486-2473), or SPC Counselor Rosalinda Rivas (210-486-2117). Find additional resources for Deferred Action for Childhood Arrivals (DACA) at <https://www.alamo.edu/spc/admissions/specific-populations/daca/>.

### Financial Literacy

**Event: Free Online Financial Coaching**

**Date/Time:** By appointment

**Location:** <https://www.aie.org/coaching/>

**Summary:** This free service in partnership with Trellis is designed to help you make smart financial decisions. For more information contact Enida Rehome at 210-486-2140.

**Event: Student Loan Information Tables**

<b>Date/Time:</b> February 3, 4	11:00 am – 1:00 pm	Sutton Learning Center (SLC), Lobby
February 10, 11	11:00 am – 1:00 pm	William C. Davis Science Bldg. (SCI), Lobby
February 17, 18	11:00 am – 1:00 pm	Center for Health Professions (CHP), Atrium
February 24, 25	11:00 am – 1:00 pm	Turbon Student Center (TSC), Lobby

**Summary:** Stop by the Student Loan information table to learn how to make smart financial decisions. For more information contact Enida Rehome at 210-486-2140.



		<b>You can respond to the 2020 Census in Spanish.</b> By April 1, 2020, every home will receive an invitation to participate in the 2020 Census. You will have three options for responding: Online. By phone. By mail.
		<b>Usted puede responder al Censo del 2020 en español.</b> Para el 1 de abril del 2020, cada hogar recibirá una invitación para participar en el censo. Usted <a href="https://2020census.gov/es.html">https://2020census.gov/es.html</a>



## Tutoring Services and Service Learning (continued)

For more information contact Elizabeth Castillo at 210-486-2473.

### Tutoring Services and Perpetual Book Loan Program

The Perpetual Book Loan Program, reserve books year-round at <https://www.alamo.edu/spc/experience-spc/current-students/student-resources/book-loan-program/>.

**Event:** General tutoring, a great place to study, and free Book Loan Program!

**Date/Time:** Monday – Thursday 8:00 am – 7:00 pm  
Friday 8:00 am – 5:00 pm  
Saturday 10:00 am – 3:00 pm

**Location:** Center for Learning Resources (CLR), 3rd floor Lobby (Circulation Desk)

**Summary:** Tutoring is available for several subjects. For more information contact Jared Boggs at 210-486-2517. Learn more at <https://www.alamo.edu/spc/academics/academic-resources/tutoring-centers/tutoring-and-technology-center/>.

## Veterans Affairs (MLK Campus)

For more information contact Veronica Griego at 210-486-2540.

<b>Veterans Affairs</b>	Tony Gable	<a href="mailto:lgable@alamo.edu">lgable@alamo.edu</a>	210-486-2521
<b>Certified Academic Advisors:</b>	Alicia Stolte	<a href="mailto:astolte2@alamo.edu">astolte2@alamo.edu</a>	210-486-2539
	Vincent Garcia	<a href="mailto:vgarcia365@alamo.edu">vgarcia365@alamo.edu</a>	210-486-2522

If you receive GI Bill Educational Benefits and are certified at least  $\frac{3}{4}$  time, you could be eligible to work for the Veterans Affairs office. The federal work study positions have flexible work schedules. To apply, call 210-486-2111, or visit <https://www.alamo.edu/spc/admissions/specific-populations/military-dependents/veteran-affairs/>.

## Volunteer Income Tax Assistance (VITA) Program (MLK Campus)

For more information contact Kenneth Bankston at 210-486-2872.

The Business Information Solutions department is pleased to announce free Income Tax Preparation services. Client services include free VITA Program classroom instruction, and free asset-building and wealth-building education services. Services are for students and community members who earn up to \$60,000 annually. We look forward to serving you this tax year. For more information contact us at 210-486-2872, via email at [spc-vita@alamo.edu](mailto:spc-vita@alamo.edu), or visit <https://www.alamo.edu/spc/experience-spc/community/community-resources/vita/>.



### HOURS OF OPERATION


VITA opening dates are January 21 - April 15, 2020.

**Services are free**

- **Monday, Wednesday:** 1 pm – 7 pm
- **Tuesday, Thursday, Friday:** 1 pm – 6 pm
- **Saturdays:** 9 am – 3 pm
- **Location:** Bowden Building (BOWD), Room 110

**Please note:** We are a virtual site and we do drop at times. We offer **My Free Taxes (MFT)** to clients that choose to do their own tax preparation.

SAVE YOUR SEAT!



**On campus.  
Off campus.  
Everyone counts.**

If you live off campus, you'll need to respond to the 2020 Census. Because unlike your on-campus classmates, you likely haven't been counted through campus housing. Here's your opportunity to impact funding for programs like Pell Grants and health care services.

2020CENSUS.GOV

Shape your future START HERE >

United States Census 2020

**Census data impacts funding for things like:**

- > School safety
- > Federal Pell Grant Program
- > Adult education grants
- > Agriculture, science, and engineering education
- > Community mental health services
- > Student wellness programs
- > Medical Assistance Program
- > School breakfast and lunch and after-school programs
- > State Children's Health Insurance Program

For more information, visit:  
**2020CENSUS.GOV**

Shape your future START HERE >

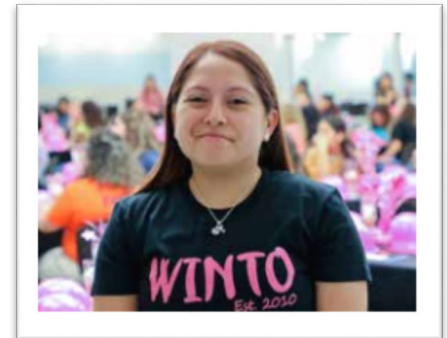
United States Census 2020

## Academic and Career Advising Services (SW Campus)

For more information contact Gina Jasso at 210-486-7185.

**Event:** New Student Orientation (February 3 – May 25)  
**Date/Time:** Monday 9:30 am – 12:30 pm  
**Location:** Industrial Technology Center (ITC), Bldg. 1, Room B-172, Conference Room  
**Summary:** You can register for New Student Orientation at <http://spcweb.alamo.edu/StudentSuccess/Registration.aspx>.

**Event:** Academic Advising by Appointment  
**Location:** Industrial Technology Center (ITC), Bldg. 1, Room B-172  
**Summary:** For more information, please call the SWC Advising hotline at 210-486-7281.



### SPC Alumna Ashley Narvarez

Ashley graduated with an Associates of Applied Science in Aircraft Technician Airframe, Certificate in Aircraft Structures Mechanics, and Certificate in Aircraft Mechanics.

## Business Office (SW Campus)

For more information contact Claudia Hernandez at 210-486-7002.

**Event:** Spring Hours  
**Date/Time:** Monday, Tuesday, Thursday 9:00 am – 1:00 pm  
 Wednesday 8:30 am – 3:30 pm  
 Closed for lunch each day 12:00 pm – 12:30 pm  
**Location:** Industrial Technology Center (ITC), Bldg. 1, Room B-172  
**Summary:** The staff can answer questions about billing, or tuition discounts and waivers. For additional services visit <https://www.alamo.edu/district/business-office/>.

## Centers of Excellence for Math & Science (SW Campus)

For more information contact Maria Rodriguez at 210-486-7123, or Dr. Jo D. Duncan at 210-486-7121.

Our programs focus on expanding college and career awareness of science, technology, engineering and mathematics (STEM). Students that engage with us can receive a stipend for their time and effort. Call or visit our website at <https://www.alamo.edu/spc/academics/academic-resources/academic-centers/centers-of-excellence/>.

## Counseling Services (SW Campus)

For more information contact Sasha Wilhelm at 210-486-2827.

**DACA Allies** - Find scholarships and legal assistance for Deferred Action for Childhood

Arrivals (DACA) at <https://www.alamo.edu/spc/admissions/specific-populations/daca/> or speak confidentially to District Coordinator Carmen de Luna-Jones (210-485-2080), SPC Director Elizabeth Castillo (210-486-2473), or SPC Counselor Rosalinda Rivas (210-486-2117).

**Event:** **Personal Counseling – A Safe Space**

**Date/Time:** Monday and Wednesday 8:00 am – 5:00 pm

**Location:** Industrial Technology Center (ITC), Bldg. 1, Room A-135

**Summary:** College students talk to Counselors about many different types of issues like career and academic concerns, anxiety, relationships, stress associated with deportation/family legal status, trauma, coping with illness, procrastination, and more. Counselors also provide referrals and community resource information. Let's talk about strategies that can help you manage your stress, school and life activities. See important resources at <https://www.alamo.edu/spc/experience-spc/current-students/support-centers/counseling-services/>.

Are you wondering where you will sleep tonight?  
Within a given year, 17% of households in San Antonio experience housing issues. **If this describes you and your family, you are not alone.**

HOME sweet HOME

Contact [Counseling Services](#), so we can share local resources with you.  
Come by or call for an appointment.  
(210) 486-2333  
MLK: Sutton Learning Ctr., Room 102  
SWC: LIFEspace Ctr., Bldg. 1, Room A-135

Counselors can help address problems that interfere with your academic growth in college. See a Counselor if you believe your substance use is affecting your academic success.

**SAMHSA's Free Mobile Apps:  
Substance Use Treatment Locator:**

[https://www.samhsa.gov/search\\_results?k=substance+use+treatment+locator](https://www.samhsa.gov/search_results?k=substance+use+treatment+locator)

## SPC Safe **SPACE** Student Success & Advocacy Center (SW Campus)

For more information contact Sasha Wilhelm at 210-486-2827.

**Event:** **Helping Students Succeed at SPC-SWC**

**Location:** Industrial Technology Center (ITC), Bldg. 1, Student Services, Room B-172

**Summary:** The SPC Safe **SPACE** Student Success & Advocacy Center provides free services for students such as a quick Grab 'N Go snack, social service assistance, and possible access to a one-time emergency aid program through Trellis. For more information contact Sasha Wilhelm at 210-486-2827.

**Event:** **Social Services Assistance**

**Date/Time:** Tuesday and Thursday 9:00 am – 3:00 pm

**Location:** Industrial Technology Center (ITC), Bldg. 1, Student Services, Room B-172

**Summary:** St. Philip's College is expanding its Advocacy Center services to better meet the needs of our students and community. Our newest office, Social Services Assistance, helps students by assessing state of Texas federal benefits. For more information contact Sandra Jones at 210-486-2824.

**New Service!**



## Disability Services (SW Campus)

For more information contact Maria Botello at 210-486-2199.



**Event:** **Schedule your appointment.** To be eligible for disability-related services, students must have a disability as defined by the **Americans with Disabilities Act of 1990 (ADA)** and **Section 504 of the Rehabilitation Act of 1973.**

**Date/Time:** Tuesday and Thursday 8:00 am – 5:00 pm

**Location:** Industrial Technology Center (ITC), Bldg. 1, Room A-135

**Summary:** Disability Services ensures reasonable academic support to qualifying students with disabilities. Our students have access to the latest information and technologies. Disability Services provides support, referrals and encouragement for our students with disabilities. Download forms at <https://www.alamo.edu/spc/experience-spc/current-students/support-centers/disability-services/>.



U.S. Citizenship  
and Immigration  
Services

*Don't be afraid to ask for help*

Immigration relief is available for victims of human trafficking, domestic violence and other crimes. Visit <https://www.uscis.gov/tools/humanitarian-benefits-based-resources/resources-victims-human-trafficking-other-crimes>.

## Library Resources and Services (SW Campus)

For more information contact April Schramm (210-486-2357), or Andrew Rivera (210-486-2564).

**Event:** **Spring Hours**

**Date/Time:** Monday - Thursday 8:00 am – 7:00 pm  
Friday 8:00 am – 5:00 pm

**Location:** Industrial Technology Center (ITC), Bldg. 1, Room C-123

**Summary:** For assistance with the databases, type your question in the **ASK US** section found at the top of the library homepage: <https://www.alamo.edu/spc/library>.

Ask Us



**Event:** **Library Survey and Valentine's Day Cookie Decorating**

**Date/Time:** February 12 10:00 am – 1:00 pm

**Location:** Industrial Technology Center (ITC), Bldg. 1, Room C-123

**Summary:** Come join the Library for some Pre-Valentine's Day fun. We will be decorating cookies, and you can help improve the library by taking our survey (click on the **Ask Us** and **Provide Library Services Feedback** links, or go to <https://spcguide.libguides.com/c.php?g=478209&p=3269708>.)

## Mathematics – Math Emporium Lab (SW Campus)

For more information contact Renita Mitchell at 210-486-2607.

**Event:** **Math Emporium – Math Bridge (Spring Hours)**

**Date/Time:** Monday 9:00 am – 5:00 pm  
Tuesday, Thursday 9:00 am – 8:00 pm  
Wednesday 11:00 am – 8:00 pm  
Thursday 9:00 am – 8:00 pm  
Friday (By appointment only)  
Saturday 8:00 am – 1:00 pm



**Location:** Multi-Disciplinary Instructional Center (MDIC), Bldg. 3, Room 114

**Summary:** At the Math Emporium open learning lab, we help students get through their courses and understand math. Tutoring is available for students in all developmental MATH courses, as well as MATH 1332, 1314, 1414, 1350 and 1351. For more information contact Paula Englebert (210-486-7241), or visit <https://www.alamo.edu/spc/academics/academic-resources/tutoring-centers/mathemporium/>.

## SPC Community Events (SW Campus)

For more information, contact Nina McGrath at 210-486-2704.



**Event:** Voter Registration and Census Information

**Date/Time:** February 25 9:00 am – 1:00 pm

**Location:** Industrial Technology Center (ITC), Bldg. 1, Crossroads

**Summary:** Join us for assistance with voter registration and information on the 2020 Census! Learn more at <https://www.alamo.edu/spc/calendar/2020/february/voter-registrationfeb-18/>.

## AlamoPROMISE Workshops-Complete Your Steps by Feb. 14!

Contact Us: Admissions, Business Office, Student Financial Aid at 210-21ALAMO (210-212-5266), or call Toll Free at 1-844-20ALAMO (1-844-202-5266).

The AlamoPROMISE Scholar Program provides for no-cost tuition and mandatory fees for seniors graduating in 2020 from one of the 25 participating high schools.

The Alamo Colleges is hosting special workshops to assist high school seniors with their AlamoPROMISE applications. **The Feb. 14<sup>th</sup> deadline to complete the three steps is fast approaching.**



1. Start by Saving Your Seat ([Save Your Seat Form](#) confirms your interest)
2. File for Financial Aid (Free application for FAFSA or TASFA)
3. Apply to an ACD College ([www.applytexas.org](http://www.applytexas.org))

Let us help with completing the steps to becoming an AlamoPROMISE scholar. Sessions will help students and their families complete their ApplyTexas and Free Application for Federal Student Aid (FAFSA), or Texas Application for State Financial Aid (TASFA) forms. Join us at one of these events to work directly with our admissions team. View workshop dates and locations at <https://www.alamo.edu/promise/resources/promiseworkshops/>.

## Student Financial Services (SW Campus)

For more information contact Grace Zapata 210-486-2269.

**Event:** Spring Hours

**Date/Time:** Monday, Tuesday, Thursday 8:30 am – 12:30 pm  
Wednesday 3:00 pm – 7:00 pm

**Location:** Industrial Technology Center (ITC), Bldg. 1, Room B-172

**Summary:** Stop by to see Marion Perez (210-486-7039) at SWC.

College Connection Financial Aid Saturdays are held at MLK in the Welcome Center (WEC), 106. All students needing assistance completing the FAFSA/TASFA are invited to attend. See session dates in red.

For more **Financial Aid news** call 210-21ALAMO (210-212-5266), or call Toll Free at 1-844-20ALAMO (1-844-202-5266), email [dst\\_sfs@alamo.edu](mailto:dst_sfs@alamo.edu), or visit <https://www.alamo.edu/spc/admissions/pay-for-college/financial-aid/>. Please have or include your Banner ID when calling or emailing.

ALAMO COLLEGES DISTRICT

**COLLEGE CONNECTION FINANCIAL AID SATURDAYS**

Let us help you complete a FAFSA or TASFA!

**SESSIONS | 9:00 AM - 1:00 PM**

OCT	NOV	DEC	FEB	MAR	APR	MAY
5	2	7	1	7	4	2

Students are encouraged to complete the ApplyTexas Application before submitting a FAFSA/TASFA.

\*Ensure information submitted on both FAFSA or TASFA match the ApplyTexas Application.

\*Students/Parents must use their 2018 Tax Return and/or 2018 Untaxed Income information to complete the 2020 - 2021 FAFSA/TASFA.

[alamo.edu/collegeconnection](http://alamo.edu/collegeconnection)

**SESSIONS ARE HELD AT ALL 5 COLLEGES!**

 <b>Northwest Vista College</b> 1201 Kirby Hawk Rd. Universal City, TX 78148 (210) 484-5173 alamo.edu/nvc Financial Aid Office (210) 212-5264	 <b>Palo Alto College</b> 3535 N. Ellison Dr. San Antonio, TX 78205 (210) 486-4320 alamo.edu/pac Financial Aid Office (210) 212-5264	 <b>St. Philip's College</b> 1400 W. Villaret Blvd. San Antonio, TX 78224 (210) 486-3100 alamo.edu/spc Financial Aid Office (210) 212-5264	 <b>San Antonio College</b> 1801 Martin Luther King Dr. San Antonio, TX 78210 (210) 484-2100 alamo.edu/sac Financial Aid Office (210) 212-5264	 <b>San Antonio College</b> 1819 N. Main Ave. San Antonio, TX 78212 (210) 484-9040 alamo.edu/sac Financial Aid Office (210) 212-5264
--	---	---	---	---

Log into ACES or contact your college Student Financial Aid office  
[alamo.edu/district/financial-aid](http://alamo.edu/district/financial-aid) 09/19

## Student Life (SW Campus)

For more information contact Paul Lede at 210-486-2581.

**Event:** Spirit Day with Birthday Cake

**Date/Time:** February 5 11:00 am – 1:00 pm

**Location:** Industrial Technology Center (ITC), Bldg. 1, Crossroads

**Summary:** Wear your favorite St. Philip's shirt or wear our school colors (royal blue and white)!

**Event:** Spirit Day

**Date/Time:** February 12, 19, 26 11:00 am – 1:00 pm

**Location:** Industrial Technology Center (ITC), Bldg. 1, Crossroads

**Summary:** Wear your favorite St. Philip's shirt or wear school colors – royal blue and white.

**Event:** Lunch and Lead Session

**Date/Time:** February 21 12:00 pm – 1:00 pm

**Location:** Industrial Technology Center (ITC), Bldg. 1, Room C-210

**Summary:** Come join us for an engaging hour of leadership, event planning support, and essential updates from the Department of Student Life. Lunch will be provided.

**Event:** Blood Drive – South Texas Blood and Tissue Center

**Date/Time:** February 25 9:00 am – 5:00 pm

**Location:** Industrial Technology Center (ITC), Bldg. 1, Tiger Bistro

**Summary:** Alamo Colleges District - SPC has partnered with the Blood Bank and the San Antonio Food Bank. The Food Bank will donate one pound of food for each unit of blood donated. The food is for our Advocacy Center on both campuses.

**Event:** Men of SPC

**Date/Time:** February 26 12:00 noon – 1:00 pm

**Location:** Industrial Technology Center (ITC), Bldg. 1, Tiger Bistro

**Summary:** All students who participate will be entered in a drawing for an opportunity to win prizes! For more information contact Paul Lede (210-486-2581), or Dr. Paul Machen (210-486-2157).

## Tutoring Services & Service Learning (SW Campus)

For more information contact Elizabeth Castillo at 210-486-2473.

**DACA Allies** - Find more resources (such as access to scholarships and legal assistance) for **Deferred Action for Childhood Arrivals (DACA)** at <https://www.alamo.edu/spc/admissions/specific-populations/daca/>, or speak confidentially to District Coordinator Carmen de Luna-Jones (210-485-2080), SPC Director Liz Castillo (210-486-2473), or SPC Counselor Rosalinda Rivas (210-486-2117).

### Financial Literacy Program

**Event:** Free Online Financial Coaching

**Date/Time:** By appointment

**Location:** <https://www.aie.org/coaching/>

**Summary:** This free service, in partnership with Trellis, is designed to help you make smart financial decisions. For more information contact Enida Rehome (210-486-2140).

### DREAMers

Complete the **TASFA** (Texas Application for State Financial Aid) today. Need assistance applying for college, state aid or scholarships? Our staff can assist you at these Community Education Training Centers:

**Brackenridge (Eastside) Center**, 532 N. Center (78202), 210-485-0280

**Harlandale (Southside) Center**, 901 March Avenue (78214), 210-989-5999

[www.alamo.edu/district/etc](http://www.alamo.edu/district/etc)  
[www.alamo.edu/district/daca](http://www.alamo.edu/district/daca)

*Happy President's Day . . .*

MEN OF SPC



ALAMO COLLEGES DISTRICT  
St. Philip's College



KEEP DREAMING

## Tutoring Services & Service Learning (continued)

For more information contact Elizabeth Castillo at 210-486-2473.



### Financial Literacy Program

**Event:** Student Loan Information Tables

**Date/Time:** February 6, 27 11:00 am – 1:00 pm

**Location:** Industrial Technology Center (ITC), Crossroads

**Summary:** Stop by our Student Loan table. For more information contact Enida Rehome (210-486-2140).

### Tutoring Services and Perpetual Book Loan Program

**Event:** General tutoring, a great place to study, and free Book Loan Program!

**Date/Time:** Tuesday and Thursday 10:00 am – 12:00 pm, and 1:00 pm – 4:00 pm

**Location:** Industrial Technology Center (ITC), Bldg. 1, Library, Room C-123N

**Summary:** Tutoring in speech, history, business, accounting (I and II) and Spanish. Call 210-486-2527, or visit <https://www.alamo.edu/spc/academics/academic-resources/tutoring-centers/tutoring-and-technology-center/>.

The Perpetual Book Loan Program is offered year-round and is available via online reservations at <https://www.alamo.edu/spc/experience-spc/current-students/student-resources/book-loan-program/>. For more information contact Liz Castillo (210-486-2473).

## Veterans Affairs (SW Campus)

For more information contact Veronica Griego at 210-486-2540.

**Veterans Affairs**

Tony Gable

[lgable@alamo.edu](mailto:lgable@alamo.edu)

210-486-2521

**Certified Academic Advisors:**

Alicia Stolte

[astolte2@alamo.edu](mailto:astolte2@alamo.edu)

210-486-2539

Vincent Garcia

[vgarcia365@alamo.edu](mailto:vgarcia365@alamo.edu)

210-486-2522

**Event:** Spring Hours:

**Date/Time:** Tuesdays 8:00 am – 12:00 pm

**Location:** Industrial Technology Center (ITC), Bldg. 1, Room B-172

**Summary:** Stop by to see the VA Academic Advisors at SWC.



## Workforce Training Network (SW Campus)

For more information contact Alfred Landeros at 210-486-7082.

**Event:** Workforce Training and Certifications

**Location:** Industrial Technology Center (ITC), Bldg. 1, Room D-116D

**Summary:** We offer non-degree courses, certificates, and industry specific certifications. To learn more about career, job training and continuing education that can meet your goals contact Alfred Landeros (210-486-7082), stop by or visit <https://www.alamo.edu/spc/academics/wtn/>.

## Workforce Solutions Alamo (SW Campus)

For more information contact Rosie Maldonado at 210-582-1826.



**Event:** American Job Center - We Help with Employment Information and Opportunities

**Date/Time:** Wednesday, Thursday 8:00 am – 5:00 pm

**Location:** Industrial Technology Center (ITC), Bldg. 1, Room D-109

**Summary:** A case manager is available two days per week to assist students with childcare services, internships, job search skills, and employment opportunities in the occupational fields of Information Technology, Advanced Manufacturing, Health and Construction. We also host career fairs on both campuses. We are here to help. For more information see Susan Vasquez, Case Manager (210-486-7008), or visit <https://www.workforcesolutionsalamo.org/>.

## Central Texas Technology Center (Off-Site)

For more information contact Janice Roth at 210-486-7410 (or 1-830-609-2106).

The CTTC provides higher education and technical skills training to promote employment opportunities in high demand occupations. We are located at 2189 FM-758, New Braunfels, TX (78130). For more information visit <https://www.alamo.edu/cttc/central-texas-technology-center/>.

Programs include Vocational Nursing (SPC Off-Site); Economic and Workforce Development (Advanced Manufacturing & Logistics, Health & Biosciences, and Science & Technology); Integrated Basic Education Skills Training; Review the Spring 2020 Course Schedule at <https://www.alamo.edu/cttc/course-scheduleregister/>, or contact our Advisors at 210-486-7400.



**WE**  
WOMEN'S ENTREPRENEURSHIP  
BOOTCAMP  
Everything You Need to Know about  
Starting a Business to Growing Your Business

**1 DAY, FREE BOOT CAMP**  
January 6 - July 27  
English y Español  
Hondo, New Braunfels, Pleasanton  
& San Antonio

**Location & Registration Here:**  
[workforcesolutionsalamo.org/we](http://workforcesolutionsalamo.org/we)

ALAMO COLLEGES  
CENTRAL TEXAS TECHNOLOGY CENTER

HONDO  
THIS IS OUR COUNTRY

SouthWest Texas Border  
Small Business  
Development Center Network  
UTSA Small Business Development Center

Coastal Bend  
COLLEGE

## Deferred Action (Off-Site)

For more information contact Carmen De Luna-Jones at 210-485-0280.

Special populations: In effort to provide access to higher education for the entire community, Alamo Colleges District offers programs and support services to help individuals from all walks of life achieve their dreams by way of earning a degree.

To locate resources on immigrant rights to advocate for yourself and protect your community, visit <https://www.alamo.edu/spc/admissions/specific-populations/daca/>. View an important immigrant's training video, "Know Your Rights & Family Preparedness". The video can also be viewed in Spanish.



ALAMO COLLEGES DISTRICT

DREAMers  
Need Assistance Applying for State Aid?  
Texas Application for State Financial Aid  
(TASFA)

Call the Community Education & Training Centers near you to schedule an appointment at:

<b>Brackenridge (Eastside) Center</b> 532 N. Center San Antonio, TX 78202 (210) 485-0280	<b>Harlandale (Southside) Center</b> 901 March Avenue San Antonio, TX 78214 (210) 989-5999
---	---

[www.alamo.edu/district/ctc](http://www.alamo.edu/district/ctc)  
[www.alamo.edu/district/daca](http://www.alamo.edu/district/daca)

The State College System of Texas does not discriminate on the basis of race, color, religion, gender, national origin, age, or disability. Information on special assistance and support services, including programs, is available upon request. For more information, contact the Office of Student Support Services, 1000 University Blvd., San Antonio, TX 78204.

**What should I do if I believe an enforcement action has taken place that is inconsistent with this guidance?** DHS has explained that there are a number of locations where an individual may lodge a complaint with DHS about a particular immigration enforcement action that may have taken place in violation of these or other policies. You may find information about these locations, and information about how to file a complaint, on the DHS website at <https://www.dhs.gov/>, the CBP website at <https://www.cbp.gov/>, or ICE website at <https://www.ice.gov/>.

**You may contact ICE Enforcement and Removal Operations (ERO)** through the Detention Reporting and Information Line (888-351-4024), the local ERO office: San Antonio Field Office (210-283-4750), or the online form at <https://www.ice.gov/webform/ero-contact-form>. The Civil Liberties Division of the ICE Office of Diversity and Civil Rights may be contacted at 202-732-0092 or [ICE.Civil.Liberties@ice.dhs.gov](mailto:ICE.Civil.Liberties@ice.dhs.gov).

**You may contact the CBP Information Center** to file a complaint or compliment via phone at 877-227-5511, or submit an email through the website at <https://help.cbp.gov>.




## Deferred Action (continued)

For more information contact Carmen De Luna-Jones at 210-485-0280.

**Where should I report discrimination if I believe it is taking place in my school?** Anyone with information about discrimination occurring in schools, including discrimination on the basis of race, color, or national origin (which may include citizenship or immigration status), may file a complaint by contacting the U.S. Department of Education, Office for Civil Rights via <https://www.state.gov/s/ocr/>, 800-421-3481 or TDD: 800-877-8339 (for language assistance contact 800-USA-LEARN (800-872-5327)) or by contacting the U.S. Department of Justice, Civil Rights Division, Educational Opportunities Section via <https://www.justice.gov/crt/educational-opportunities-section>, 877-292-3804, or TTY: 800-514-0383.

**Will enforcement actions ever occur at sensitive locations?** DHS has explained that immigration enforcement actions may occur at sensitive locations in limited circumstances, but should generally be avoided. DHS officers and agents from U.S. Immigration and Customs Enforcement (ICE) or U.S. Customs and Border Protection (CBP) may conduct an enforcement action at a sensitive location only with prior approval from an appropriate supervisory DHS official, or if the enforcement action involves exigent circumstances related to national security, terrorism, or public safety, or where there is imminent risk of destruction of evidence material to an ongoing criminal case.

**Brackenridge & Harlandale Education Centers**  
For information on IME BECAS Scholarships  
Call (210) 485-0280 or (210) 989-5999



### Alamo Colleges Foundation - DREAMers SCHOLARSHIP

The 2020 – 2021 Scholarship Application is online at [www.alamo.edu/foundation/scholarships](http://www.alamo.edu/foundation/scholarships). DREAMers submit the application online, and retain the application number given to you for use on the Certification form. Submit the Scholarship Certification form to BETC before the deadline. For more information call Carmen De Luna Jones (210-486-0280).

**Application Priority Deadline:** March 29, 2020  
**Application Final Deadline:** September 6, 2020

### Free Tax Presentations for Immigrant Families

Taxes can be confusing – even for those with experience. The Texas Taxpayer Assistance Project will host free tax presentations for immigrant families. Some topics include filing status, head of household, standard deductions, dependents, Individual Taxpayer Identification Number (ITIN), and IRS audits. Call (210) 212-3747 for more info.



**SAN ANTONIO**

SAN ANTONIO PUBLIC LIBRARY  
TEXAS TAXPAYER ASSISTANCE PROJECT

**FREE TAX PRESENTATIONS FOR IMMIGRANT FAMILIES**  
**SÉSIONES GRATUITAS DE INFORMACIÓN FISCAL PARA FAMILIAS INMIGRANTES**

**January 28**  
**5 PM**  
Carver Library  
3350 E. Commerce  
78220

**February 7**  
**1 PM**  
Cody Library  
11441 Vance Jackson  
78230

**February 13**  
**6 PM**  
Cortez Library  
2830 Hunter Blvd.  
78224



## UTSA Dreamers Resource Center (Student Center for Community Engagement and Inclusion)

The **UTSA Dreamer Resource Center** is celebrating its second anniversary! The Center provides support services to Dreamers in navigating academic, mental health, and legal resources. Call (210) 458-7777, email [dreamers@utsa.edu](mailto:dreamers@utsa.edu), or visit [https://www.utsa.edu/dreamers/about/index.html?mc\\_cid=87f9bf2c86&mc\\_eid=0498ef8875](https://www.utsa.edu/dreamers/about/index.html?mc_cid=87f9bf2c86&mc_eid=0498ef8875).



### FACT SHEET FOR FAMILIES AND SCHOOL STAFF: LIMITATIONS ON DHS IMMIGRATION ENFORCEMENT ACTIONS AT SENSITIVE LOCATIONS

All children have a right to a free public education, regardless of their actual or perceived immigration or citizenship status or that of their parents.<sup>1</sup> Education leaders, teachers, students, and families, have asked questions about guidance that was released by the U.S. Department of Homeland Security (DHS) that limits immigration enforcement actions from occurring at schools and other “sensitive locations.” This DHS guidance is at: <https://www.cbp.gov/border-security/sensitive-locations-faqs>. To respond to those questions, the U.S. Department of Education has worked with DHS to prepare this fact sheet, intended to help parents, families, educators, and other school staff understand the DHS guidance.

In general, DHS has explained that immigration enforcement actions may not occur at or in “sensitive locations.”

These locations include:



Schools, such as known and licensed daycares, pre-schools and other early learning programs; primary schools; secondary schools; post-secondary schools up to and including colleges and universities; as well as scholastic or education-related activities or events.



School bus stops that are marked and/or known to the officer, during periods when children are present at the stop.



Medical treatment and health care facilities, such as hospitals, doctors’ offices, accredited health clinics, and emergent or urgent care facilities.



Places of worship, such as churches, synagogues, mosques, and temples.



Religious or civil ceremonies or observances, such as funerals and weddings.



During public demonstrations, such as a march, rally, or parade.

# Scholarships and Giving Back Opportunities

**Student Engagement Grants (SEG):** Are you a full-time student? Do you have a GPA of 2.5 or higher? If so, you may qualify for a **\$1,000 Student Engagement Scholarship**. Students awarded this scholarship will participate in the QEP Ethical Decision-Making Reading Buddies at Bowden Academy. To apply: <https://www.alamo.edu/spc/admissions/pay-for-college/scholarships/seg/> or turn in application in SLC 219. For more information contact Irene Young at 210-486-2391, or email at [iyoung@alamo.edu](mailto:iyoung@alamo.edu).

## SPC Scholarship Office

*For more information contact Gloria P. Hernandez at 210-486-2498.*

**St. Philip's College Scholarships:** All students are encouraged to apply online at <https://www.alamo.edu/about-us/offices-departments/departments/foundation/students/>.

**Priority Deadline: March 29, 2020**

**Scholarship Amount: Varies**

**Final Deadline: September 6, 2020**

**Greater Texas Foundation Day Care Scholarship:** This scholarship is now receiving applications. If you are enrolled in school full time, a single parent with a child 12 years (or under) and are in your second semester you may be eligible to apply for the scholarship. Complete [the form](#) and return to the Scholarship Office in SLC 319. [Click here](#) to learn more, visit <https://www.alamo.edu/spc/admissions/pay-for-college/scholarships/>, or contact Gloria Hernandez at 210-486-2498.

**Deadline: February 28, 2020**

**Harvey Najim Pathways:** Must be graduating from a high school in one of these ISD's: East Central, Edgewood, Harlandale, San Antonio, South San, Southside, Southwest, or Somerset. Pursue degree in Information Technology, Cyber-Security, Nursing, or Respiratory Care. Come by the Scholarship Office, Sutton Learning Center (SLC), Room 319E, for application. For more information contact Gloria Hernandez at 210-486-2498.

**Deadline: N/A**      **Scholarship Amount: \$2,500**

**San Antonio Area Foundation – Robert B. Taylor Scholarship:** Over 90 scholarships available. All students are encouraged to apply. Call 210-225-2243 or visit <http://saafdn.org/Scholarships/Welcome-Scholarship-Seekers>.

**Deadline: N/A**      **Scholarship Amount: Varies**

## U.S. Congressman Lloyd Doggett Seeks Paid Interns for San Antonio District Office:

Applications for paid Spring 2020 Internships are being accepted now and will be considered on a rolling basis. Those interested in an internship should submit a resume, cover letter, and a list of three professional references via email to [brendan.kennedy@mail.house.gov](mailto:brendan.kennedy@mail.house.gov). **No calls or drop-ins.**

# College for All Texans: Educational Aid Exemption Application

For more information, contact Alan David Ahmad at 210-485-0613.

The **EAE** is available to eligible students taking courses toward teacher certification and pays for the tuition and required fees for said coursework in the semester for which it was applied. The **Advisor-Cert-Form** is also available in the Student Financial Services office on your campus. Visit <http://www.collegeforalltexans.com/apps/financialaid/tofa2.cfm?ID=572>.



## White House Initiative on Historically Black Colleges and Universities

U.S. Department of Education

The White House Initiative on Historically Black Colleges and Universities offers full-time internships year-round (spring, summer, and fall). Part-time applicants who can commit to at least 20 hours a week will be considered, although the Initiative prioritizes full-time applicants (32-40 hours a week). Internships are available in Washington D.C. at the U.S. Department of Education, Initiative headquarters.

**How to Apply:** Visit the [Department of Education's Internship page](#) for detailed instructions and the application.

- **Fall Deadline – July 15**  
Dates of program: September through December
- **Winter/Spring Deadline – October 1**  
Dates of program: January through May
- **Summer Deadline – March 15**  
Dates of program: May/June through July/August



### Citizenship Classes

Register via telephone by calling 210-207-9168. The course will be 16 weeks long and space is strictly limited. Textbooks will be provided. Please call Emily Flores with questions about registering for the course at 210.207.9168.

Every Friday beginning January 10, 10:00 am to 1:00 pm.  
Bazan Branch Library 2200 W. Commerce, 78207 210.207.9168

### Prepare a competitive application!



Attend a workshop: polish your resume, draft your essay, and line up your references. This workshop requires (1) work to be done before attending the session, and that (2) an RSVP be submitted by Feb. 5, 2020. Review the website and application at <https://www.hacu.net/hacu/default.asp>.

**San Antonio College Friday, Feb. 7 1:30pm – 4:30pm**

\*\*webinar address

<https://www.hacu.net/NewsBot.asp?MODE=VIEW&ID=3151>

<b>FEDERAL SECTOR INTERNSHIPS</b> <b>HACU NATIONAL INTERNSHIP PROGRAM</b> Work in Major U.S. Cities   Gain Real World Experience <b>CORPORATE SECTOR INTERNSHIPS</b>		Paid Internships for all Majors.  Work in Washington, D.C. or other major cities.
To learn more, contact our Washington D.C. office at 202-467-0893, or visit <a href="http://www.hacu.net/hnip">www.hacu.net/hnip</a> .  <b>Eligibility</b> <ul style="list-style-type: none"> <li>• Be enrolled in a degree-seeking program</li> <li>• Must be an undergraduate who has completed freshman year</li> <li>• 3.0 GPA recommended</li> <li>• Be authorized or eligible to work by law in the U.S.</li> <li>• Completion of freshman year in college before the internship begins</li> </ul>	Apply online at <a href="https://www.hacu.net/hacu/ApplyOnline.asp">https://www.hacu.net/hacu/ApplyOnline.asp</a> .  <b>Sessions</b> Spring 2020: Summer 2020: Fall 2020:	<b>Deadlines</b> <b>November 15, 2019*</b> <b>February 14, 2020</b> <b>June 5, 2020</b>  <i>*Extended date</i>



PLEASE JOIN IN CELEBRATING  
THE INVESTITURE  
OF  
**The Honorable Jason Pulliam**

UNITED STATES DISTRICT JUDGE  
FOR THE WESTERN DISTRICT OF TEXAS

THURSDAY, FEBRUARY 20, 2020  
2:00 PM

LILA COCKRELL THEATRE  
200 E. MARKET ST.  
SAN ANTONIO, TEXAS

PLEASE RSVP TO [txwd\\_rsvp@txwd.uscourts.gov](mailto:txwd_rsvp@txwd.uscourts.gov)

PLEASE DIRECT ANY QUESTIONS TO MISSY KAUFFMAN AT  
[missy\\_kauffman@txwd.uscourts.gov](mailto:missy_kauffman@txwd.uscourts.gov) OR 210-244-5183.

Please see important information below regarding mandatory RSVP and security

**SECURITY AND RSVP INFORMATION**

Security regulations require **each individual** seeking admission to submit an RSVP. Upon entry, **each individual** must present a valid Driver's License or government-issued ID matching the RSVP.

**RSVP to: [txwd\\_rsvp@txwd.uscourts.gov](mailto:txwd_rsvp@txwd.uscourts.gov)**

**Guest Check-In**

Please plan to arrive by 1:30 p.m. to check in.

All bags and purses are subject to search.

The following items are prohibited, with no exception: firearms, knives, OC spray, tasers, lighters, explosives and other dangerous weapons or materials.

**Dignitary Check-In**

All judges, elected officials and dignitaries will check in at a designated table and will be seated in a designated area.

We request all judges wear their robes

**International Programs – Study Abroad**

For more information call 210-485-0084 or visit us at <https://alamo-sa.terradotta.com/>.

**Join us at Viva Science SA in April!**

*(Free Event)*

*\*Music \*Food Trucks \*Ice Cream*

For more information contact Marcus Webster,  
UT Health San Antonio,  
(210) 567-3708 or via email at  
[webstern@uthscsa.edu](mailto:webstern@uthscsa.edu).

<https://www.facebook.com/VivaScienceSA/>  
<https://www.instagram.com/vivasciencesa/>  
<https://twitter.com/ScienceViva>



Saturday, April 18, 2020  
9 a.m. to 3 p.m.  
The Witte Museum  
3801 Broadway St, San Antonio, TX 78209

**A FREE AND FAMILY-FRIENDLY EVENT**

-  Interactive Science Booths With Fun Activities
-  Delicious Food Trucks
-  Science Themed Artwork
-  Poster Session With Research From Local Scientists
-  Science Talks

