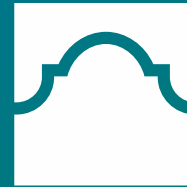


Voices for Children: Early Childhood to Higher Education

Dr. Mike Flores

Chancellor of the Alamo Colleges District



ALAMO
COLLEGES
DISTRICT



PROTECTIVE FACTORS

1. Parent Resilience
2. Knowledge of Parenting and Child Development
3. Social and Emotional Competence of Children
4. Social Connections
5. Concrete Support in Times of Need

Source: United Way of San Antonio and Bexar County







NORTHWEST VISTA
COLLEGE

JANICE & NATHANIEL



NATHANIEL

Vision

Alamo Colleges will be the best in the nation in Student Success and Performance Excellence

Mission

Empowering our diverse communities for success.

Values



Students First



Can-Do Spirit



Respect For All



Data-Informed



Community-Engaged



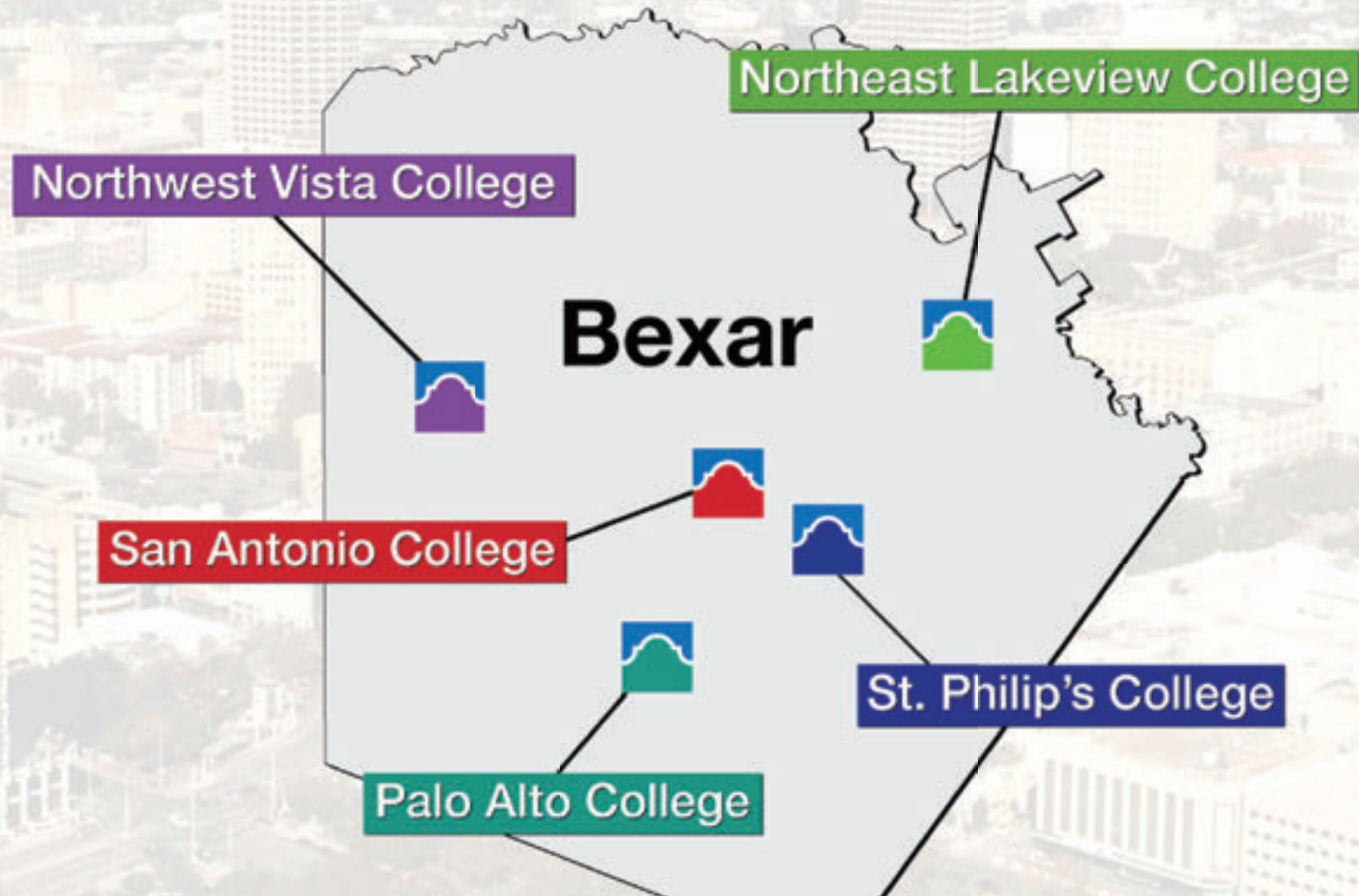
Collaboration



ALAMO
COLLEGES
DISTRICT



THE ALAMO COLLEGES FAMILY



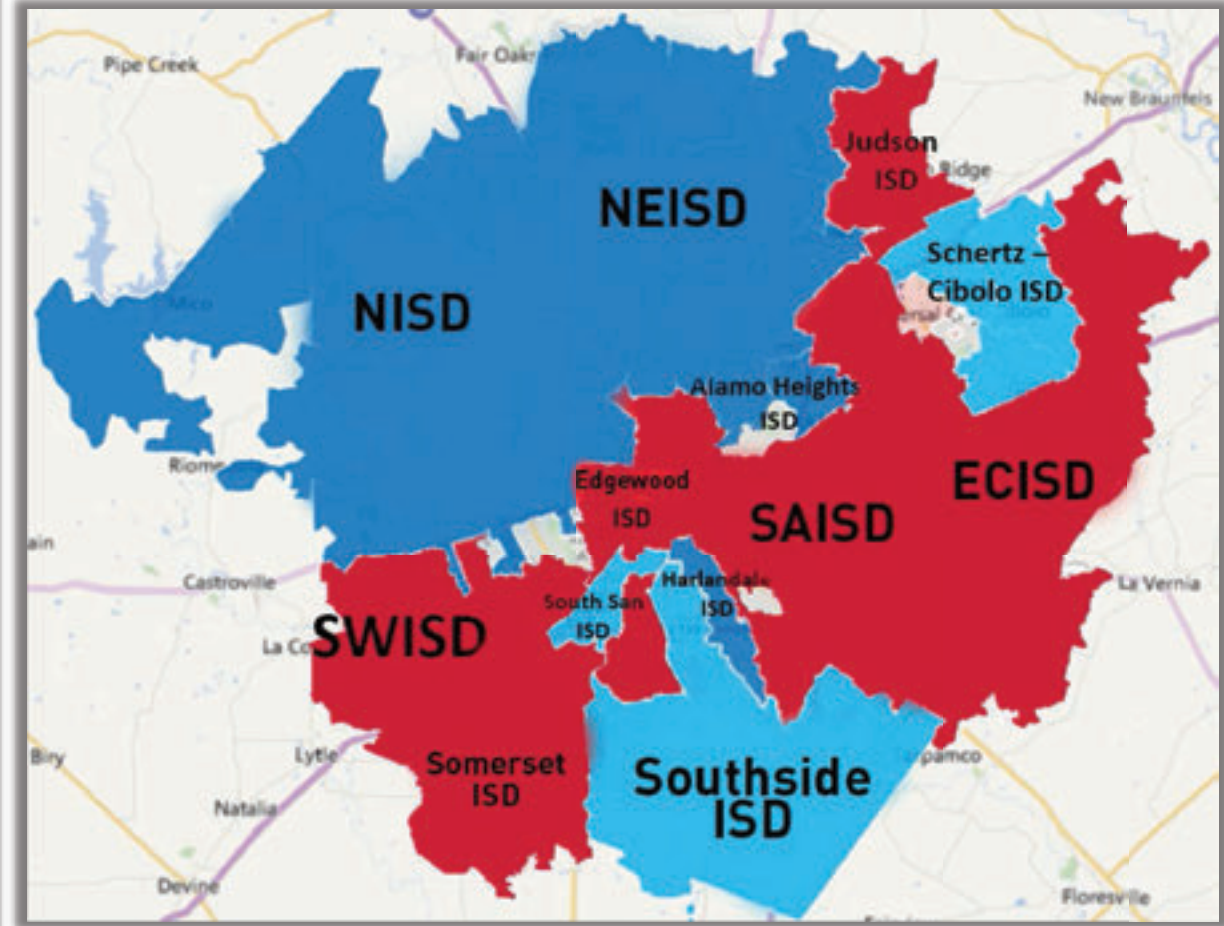
ALAMO
COLLEGES
DISTRICT



College Participation Rate

Bexar County 2017 High School Graduates Enrolled in TX Colleges

District	Total Graduates	Enrolled in College	% Not Found or Trackable
Alamo Heights	411	226 (55%)	185 (45%)
Northside	6856	3511 (51%)	3345 (49%)
Harlandale	986	502 (51%)	484 (49%)
North East	4981	2527 (51%)	2454 (49%)
Schertz-Cibolo-U City	1247	606 (49%)	641 (51%)
Southside	325	150 (46%)	175 (54%)
South San	533	240 (45%)	293 (55%)
San Antonio	2672	1125 (42%)	1547 (58%)
Somerset	250	105 (42%)	145 (58%)
East Central	697	284 (41%)	413 (59%)
Southwest	855	346 (40%)	509 (60%)
Judson	1343	539 (40%)	804 (60%)
Edgewood	591	210 (36%)	381 (64%)



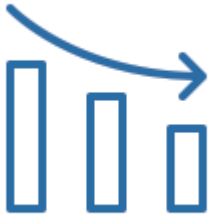
Community Educational Attainment



By 2020, 65% of jobs require credentials beyond high school. Only 33% of adults have an associate's or higher in San Antonio.



In Bexar County, only 11% of 8th grade students from low-income families earn a two- or four-year degree six years after high school graduation.



In San Antonio, only 45% of high school seniors attend college, and only 33% graduate, which is 12% lower than the U.S. average.



Student Profile

62% Hispanic

8% African-American

24% White

3% Asian

3% Other

57% Female

43% Male

19% Full-Time

81% Part-Time

70% Receive Financial Aid

62% Underprepared Students

**Total Enrollment
100,258**





DUAL CREDIT



12,500
Students



18
Early College
High Schools
& Academies

A woman with blonde hair in a ponytail, wearing a gold earring, is smiling and looking towards a man. The man is smiling back, wearing a black t-shirt with a circular logo that says 'UNITE • CRUSH • CONQU' and a backpack. In the background, there is a whiteboard with 'Welcome Veterans' written on it, a yellow banner that says 'PALO ALTO', and a small American flag on a desk.

AlamoADVISE

MANAGEMENT MODEL
FROM ENROLLMENT
TO COMPLETION

350:1

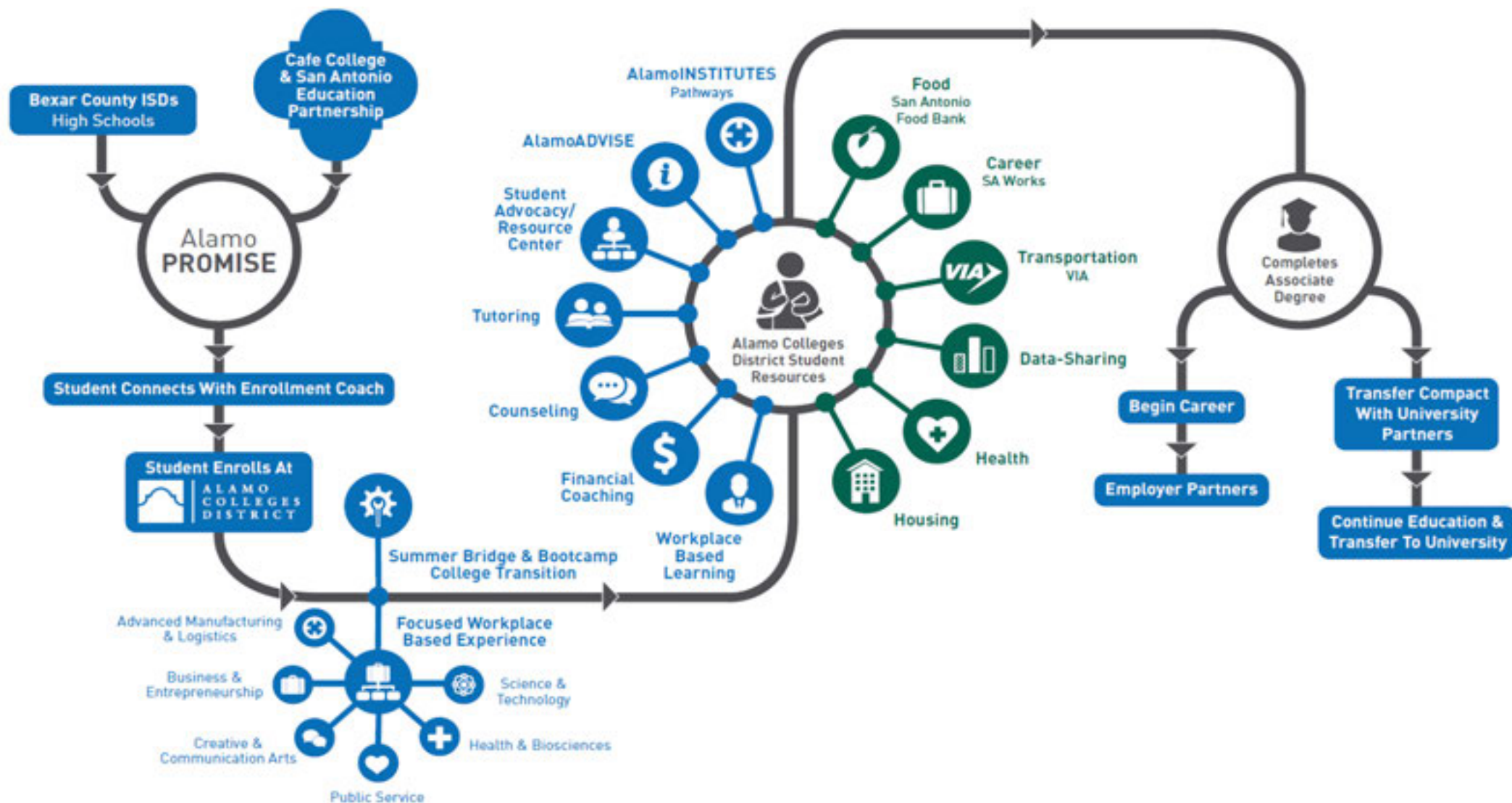
Student Advisor Ratio

A group of graduates in blue caps and gowns with green stoles are standing in a line, looking upwards. The background shows a large stadium with blue seats and other graduates. A teal banner is overlaid on the left side of the image.

AlamoPROMISE

**LAST-DOLLAR
SCHOLARSHIP**

The AlamoPROMISE Network Strategy



ALAMO
COLLEGES
DISTRICT



Promise Program Outcomes



62%

increase in
persistence
rate (fall to
spring).

The
Kalamazoo
Promise[®]

33%

increase in
college
completion
rate.



25%

more high
school
graduates
attend
college.



16%

increase in
community
college
retention
rate.



40%

increase in
community
college
enrollment.



ALAMO
COLLEGES
DISTRICT



The background image shows two men wearing white hard hats and safety glasses, focused on assembling a blue robotic chassis. They are in a workshop setting with wooden walls and various tools and equipment visible in the background. The man on the left is wearing a beard and glasses, while the man on the right is looking intently at the task.

\$9,400

The average associate degree graduate from the Alamo Colleges will see an increase in earnings of \$9,400 each year compared to someone with a high school diploma working in Texas.



OUR MOONSHOT

Partnering to end poverty
through education
in the Greater
San Antonio
region.

THE ASPEN INSTITUTE
COLLEGE EXCELLENCE PROGRAM



ALAMO COLLEGES DISTRICT
Palo Alto College



ALAMO COLLEGES DISTRICT
Northwest Vista College



ALAMO COLLEGES DISTRICT
San Antonio College



ALAMO COLLEGES DISTRICT
St. Philip's College



ALAMO COLLEGES DISTRICT
Palo Alto College



ALAMO
COLLEGES
DISTRICT





DORATHY TARPEH

ST. PHILIPS COLLEGE ALUMNA –
NURSING PROGRAM

“I think the Alamo Colleges is the best thing that ever existed because they're here for a reason. They want the people in the community to get better so that they can give back to their community.”

“It made it possible for a person like me, and it made my dream of becoming a nurse – a reality.”



THANK YOU



ALAMO
COLLEGES
DISTRICT

