

# The Economic Value of THE ALAMO COLLEGES DISTRICT

## ALUMNI IMPACT



Impact of the increased earnings of the Alamo Colleges' alumni and the businesses they work for

**\$2.0 billion**  
ANNUAL ADDED INCOME

an economic boost similar to hosting the World Series

**333x**



or

**30,551**  
JOBS SUPPORTED



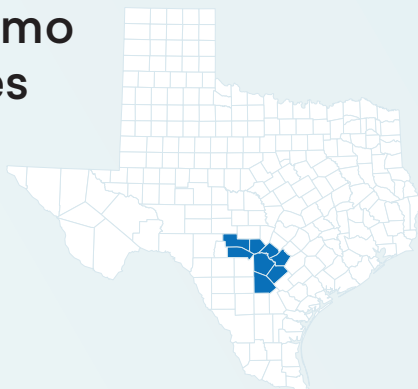
## About the Alamo Colleges District

- 69,561** Credit Students
- 5,919** Non-Credit Students
- 5,687** Employees

Student numbers are unduplicated annual headcounts.

**1 out of every 35 jobs** in the Alamo Colleges Service Area is supported by the activities of the Alamo Colleges and their students.

## The Alamo Colleges Service Area



## OPERATIONS SPENDING IMPACT



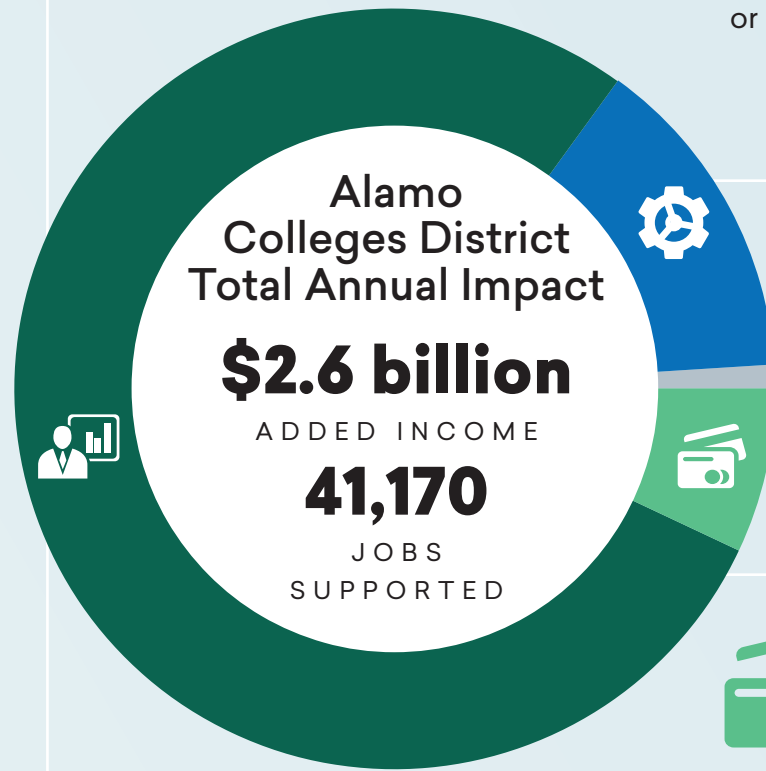
Impact of annual payroll and other day-to-day spending

**\$370.2 million**  
ADDED INCOME



enough to buy **10,890** new cars

or **7,733** JOBS SUPPORTED



**\$22.6 million**  
ADDED INCOME

## CONSTRUCTION SPENDING IMPACT

Impact of expenditures for ongoing construction projects



## STUDENT SPENDING IMPACT

Impact of the daily spending of the Alamo Colleges students retained in and attracted to the region

**\$170.6 million**  
ADDED INCOME

enough to buy

**12,185**



families\* a year's worth of groceries

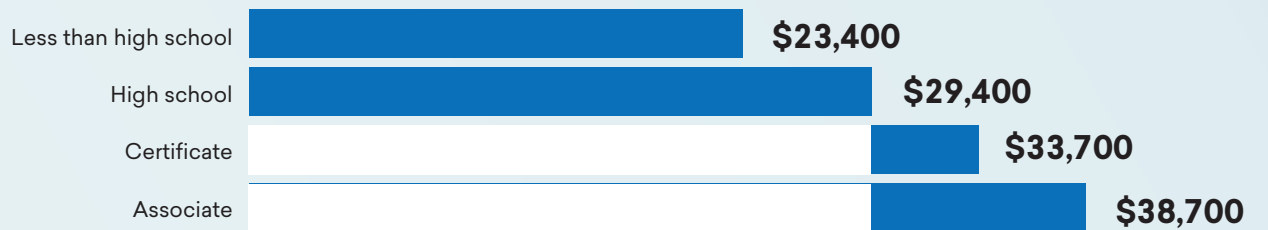
or **2,542** JOBS SUPPORTED



\* family of four    ♀ = 1,000 jobs

## Average Earnings in the Alamo Colleges Service Area

The average associate degree graduate earns \$9,300 more than a high school graduate.



## For every \$1 invested by...

### STUDENTS

**\$7.00** in lifetime earnings

### TAXPAYERS

**\$3.70** in added tax revenue and public sector savings

### SOCIETY

**\$22.40** in added state revenue and social savings