

St. Philip's College



Student Profile Trends

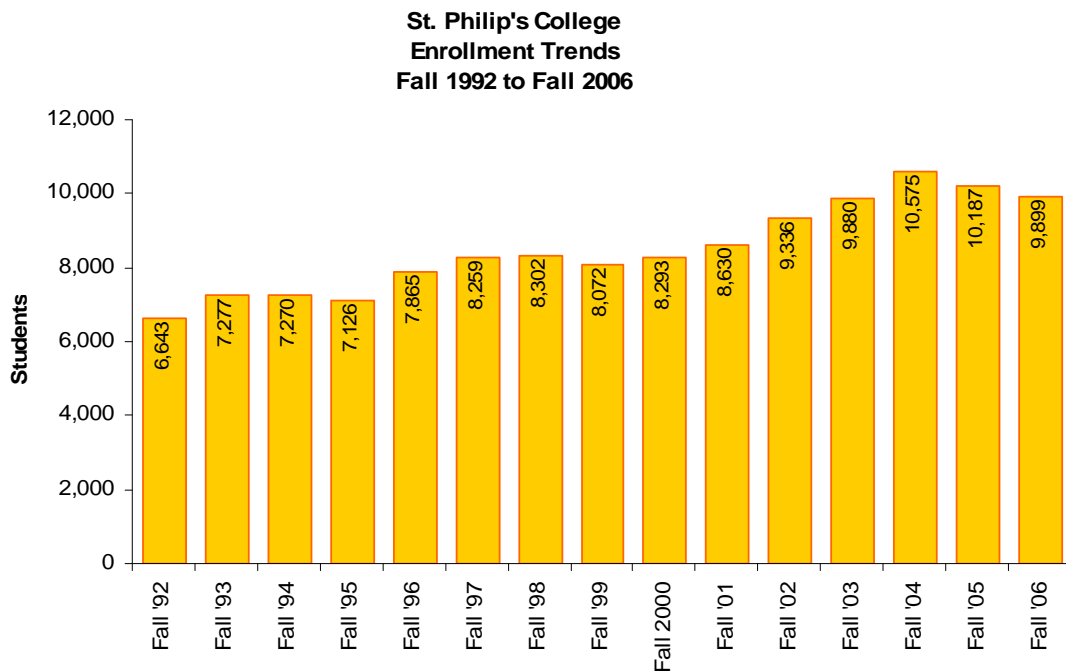
Fall 2006

CONTENTS

Enrollment Trends	1
Day/Evening	2
Age	3-4
Gender	5
Age and Gender	6
Ethnicity	7
FTIC	8
Feeder High Schools.....	9
Feeder Zip Codes.....	10
Retention	11
Definitions	12

ST. PHILIP'S COLLEGE ENROLLMENT TRENDS Fall 1992 to Fall 2006

Year	Fall	Spring			Summer			Total	
		Fall Flex II	Spring	Total	Spring Flex II	Summer I	Total	Summer II	
06-07	9,899	1,375	9,520	10,895			0	20,794	
05-06	10,187	1,396	9,730	11,126	1,378	3,617	4,995	1,883	28,191
04-05	10,575	1,633	10,234	11,867	1,406	4,493	5,899	1,903	30,244
03-04	9,880	1,777	10,191	11,968	1,593	4,611	6,204	1,917	29,969
02-03	9,336	1,392	9,648	11,040	1,609	4,216	5,825	1,660	27,861
01-02	8,630	1,060	8,692	9,752	1,333	3,859	5,192	1,308	24,882
00-01	8,293	1,077	7,787	8,864	1,391	2,903	4,294	1,025	22,476
99-00	8,072	940	8,001	8,941	1,336	3,204	4,540	1,236	22,789
98-99*	8,302	873	8,013	8,886	977	3,525	4,502	1,203	22,893
97-98	8,259	813	8,009	8,822	1,023	3,611	4,634	931	22,646
96-97	7,865	901	7,905	8,806	1,047	3,218	4,265	751	21,687
95-96	7,126	639	7,220	7,859	756	3,155	3,911	830	19,726
94-95	7,270	494	7,084	7,578	544	3,003	3,547	553	18,948
93-94	7,277	474	7,330	7,804	588	3,357	3,945	575	19,601
92-93	6,643	166	6,989	7,155	---	3,477	3,477	521	17,796

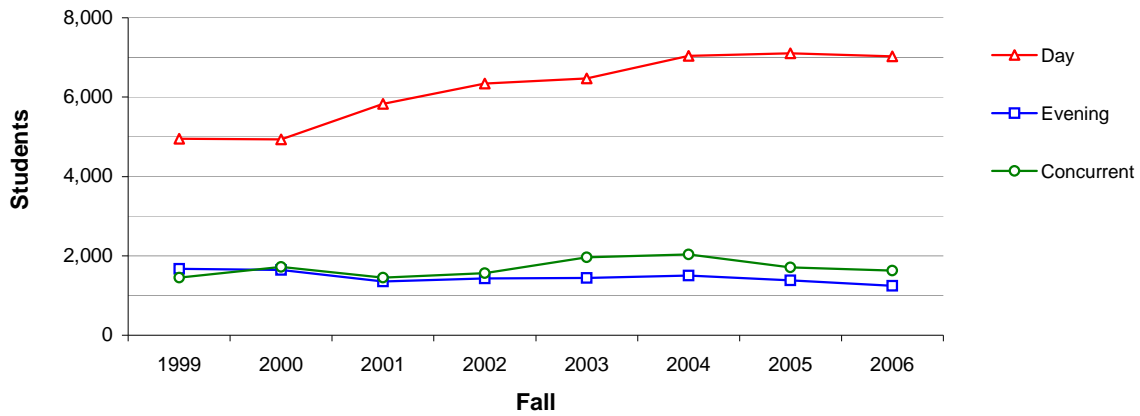


*Summer II '99 includes 173 for special sessions for Allied Health and Nursing

ST. PHILIP'S COLLEGE DAY/EVENING ENROLLMENT TRENDS

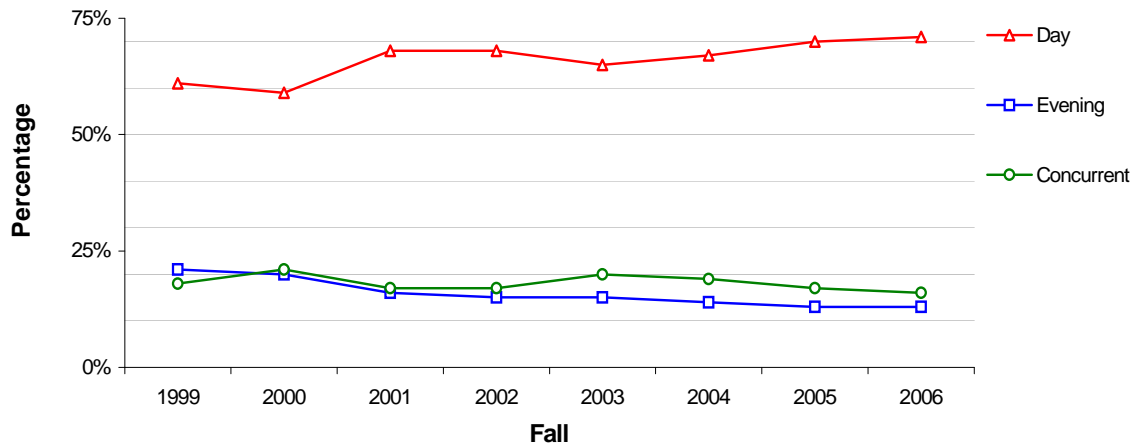
TOTAL STUDENTS

FALL	1999	2000	2001	2002	2003	2004	2005	2006
Day	4,952	4,932	5,831	6,344	6,469	7,042	7,101	7,027
Evening	1,669	1,640	1,351	1,431	1,445	1,500	1,379	1,242
Concurrent	1,451	1,718	1,448	1,561	1,966	2,033	1,707	1,630



PERCENTAGE

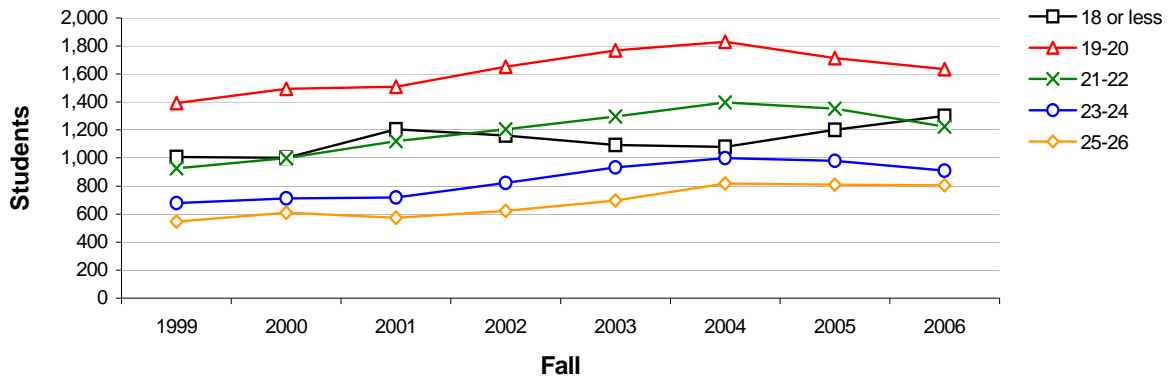
FALL	1999	2000	2001	2002	2003	2004	2005	2006
Day	61%	59%	68%	68%	65%	67%	70%	71%
Evening	21%	20%	16%	15%	15%	14%	13%	13%
Concurrent	18%	21%	17%	17%	20%	19%	17%	16%



ST. PHILIP'S COLLEGE AGE ENROLLMENT TRENDS

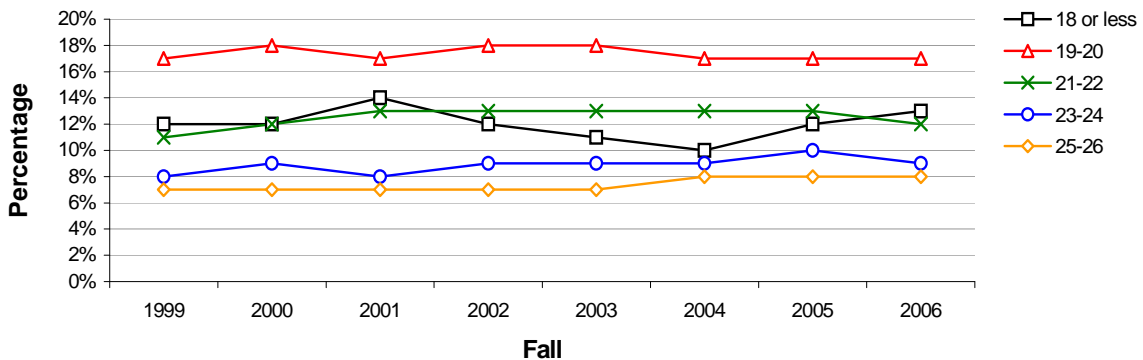
TOTAL STUDENTS

FALL	1999	2000	2001	2002	2003	2004	2005	2006
18 or less	1,007	1,002	1,206	1,160	1,092	1,080	1,200	1,300
19-20	1,392	1,494	1,509	1,651	1,768	1,831	1,713	1,634
21-22	927	999	1,121	1,205	1,296	1,397	1,352	1,224
23-24	679	713	719	823	934	999	979	909
25-26	546	610	573	623	698	818	809	806
27-50+	<i>(next page)</i>							



PERCENTAGE

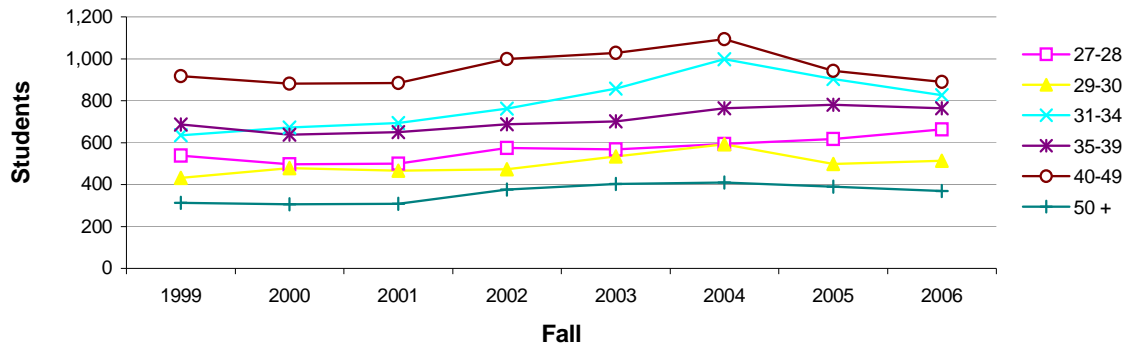
FALL	1999	2000	2001	2002	2003	2004	2005	2006
18 or less	12%	12%	14%	12%	11%	10%	12%	13%
19-20	17%	18%	17%	18%	18%	17%	17%	17%
21-22	11%	12%	13%	13%	13%	13%	13%	12%
23-24	8%	9%	8%	9%	9%	9%	10%	9%
25-26	7%	7%	7%	7%	7%	8%	8%	8%
27-50+	<i>(next page)</i>							



ST. PHILIP'S COLLEGE AGE ENROLLMENT TRENDS (Continued)

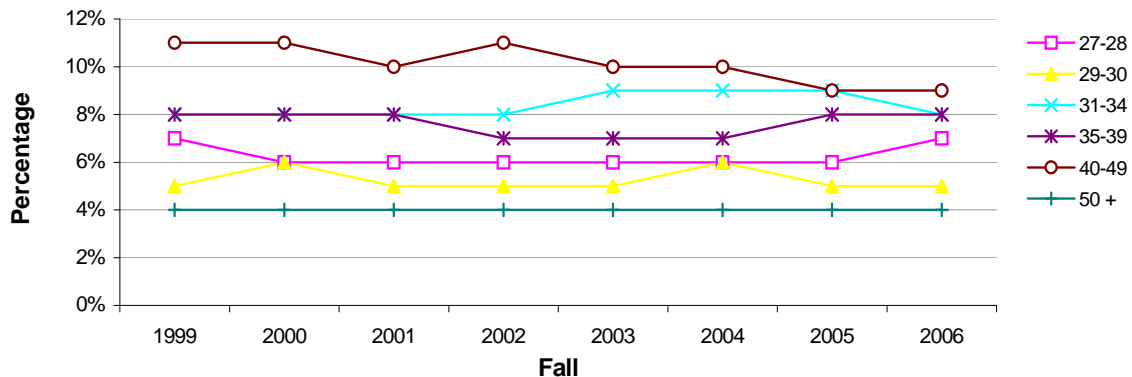
TOTAL STUDENTS

FALL	1999	2000	2001	2002	2003	2004	2005	2006
27-28	538	497	500	574	567	594	617	663
29-30	432	479	466	474	534	592	498	513
31-34	635	673	693	762	858	998	904	826
35-39	686	638	650	688	702	764	781	764
40-49	917	882	884	1,000	1,028	1,093	943	890
50 +	313	306	309	376	403	409	391	370



PERCENTAGE

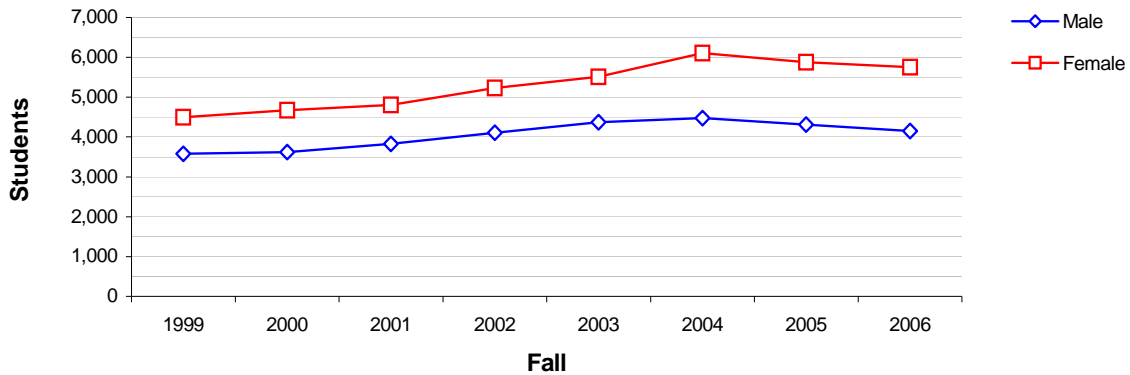
FALL	1999	2000	2001	2002	2003	2004	2005	2006
27-28	7%	6%	6%	6%	6%	6%	6%	7%
29-30	5%	6%	5%	5%	5%	6%	5%	5%
31-34	8%	8%	8%	8%	9%	9%	9%	8%
35-39	8%	8%	8%	7%	7%	7%	8%	8%
40-49	11%	11%	10%	11%	10%	10%	9%	9%
50 +	4%	4%	4%	4%	4%	4%	4%	4%



ST. PHILIP'S COLLEGE GENDER ENROLLMENT TRENDS

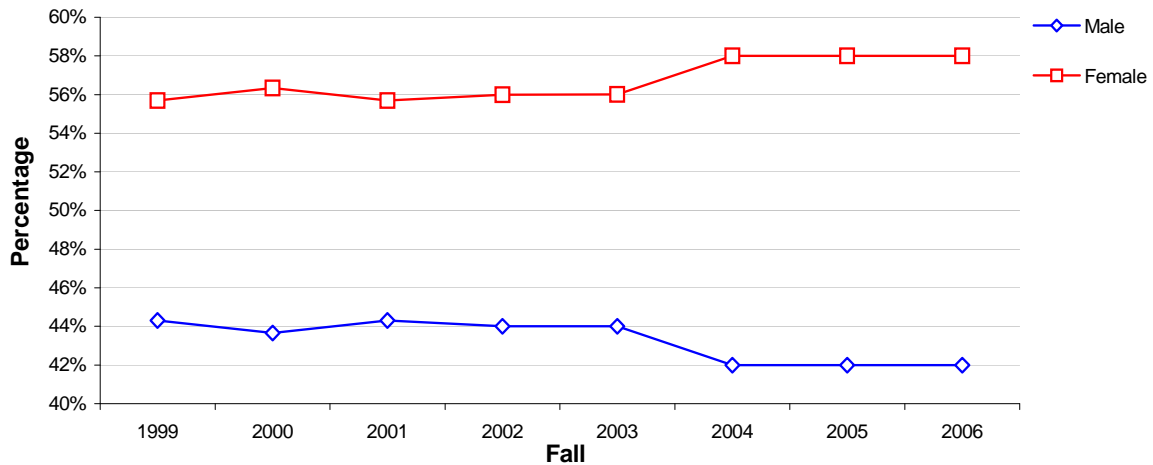
TOTAL STUDENTS

FALL	1999	2000	2001	2002	2003	2004	2005	2006
Male	3,577	3,620	3,824	4,107	4,372	4,470	4,312	4,150
Female	4,495	4,673	4,806	5,229	5,508	6,105	5,875	5,749



PERCENTAGE

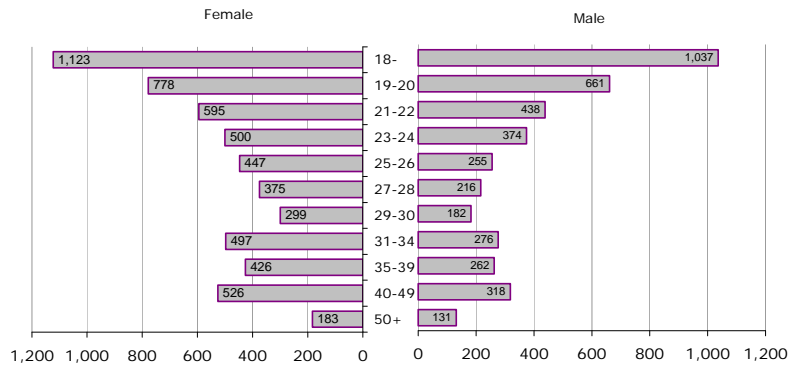
FALL	1999	2000	2001	2002	2003	2004	2005	2006
Male	44.3%	43.7%	44.3%	44.0%	44.0%	42.0%	42.0%	42.0%
Female	55.7%	56.3%	55.7%	56.0%	56.0%	58.0%	58.0%	58.0%



ST. PHILIP'S COLLEGE AGE & GENDER ENROLLMENT TRENDS

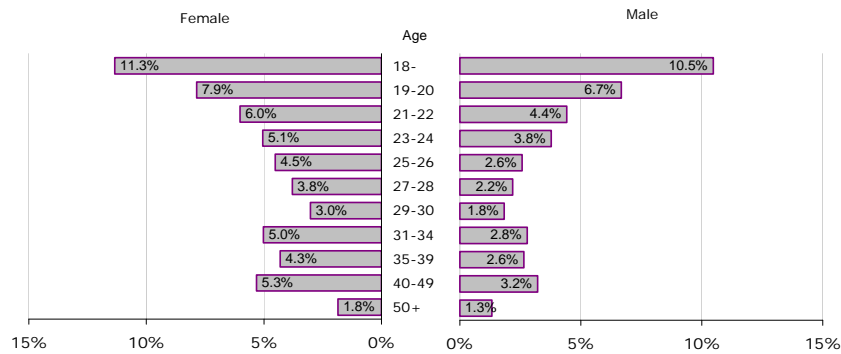
TOTAL STUDENTS FALL 2006

Age	Gender		Total
	Female	Male	
18 or less	1,123	1,037	2,160
19-20	778	661	1,439
21-22	595	438	1,033
23-24	500	374	874
25-26	447	255	702
27-28	375	216	591
29-30	299	182	481
31-34	497	276	773
35-39	426	262	688
40-49	526	318	844
50+	183	131	314



PERCENTAGE FALL 2006

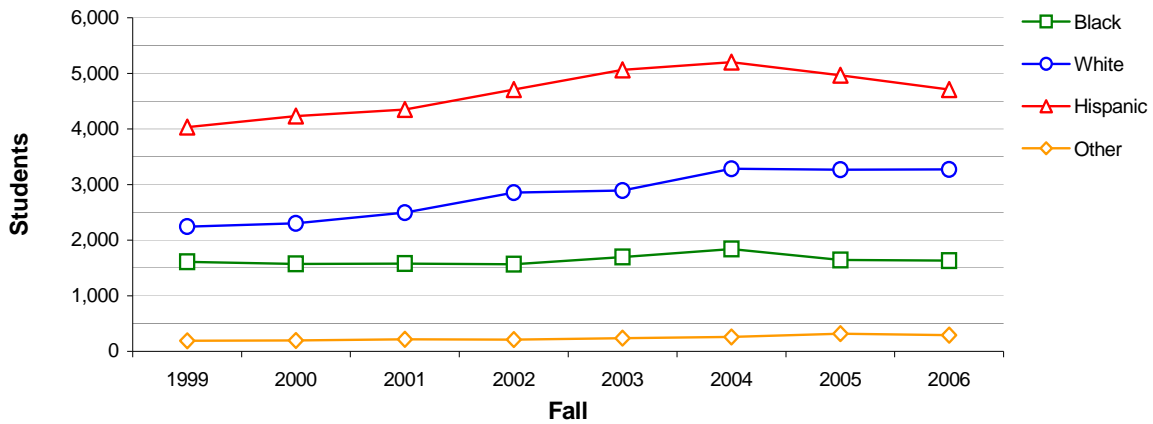
Age	Gender		Total
	Female	Male	
18-	11.3%	10.5%	11.8%
19-20	7.9%	6.7%	16.8%
21-22	6.0%	4.4%	13.3%
23-24	5.1%	3.8%	9.6%
25-26	4.5%	2.6%	7.9%
27-28	3.8%	2.2%	6.1%
29-30	3.0%	1.8%	4.9%
31-34	5.0%	2.8%	8.9%
35-39	4.3%	2.6%	7.7%
40-49	5.3%	3.2%	9.3%
50+	1.8%	1.3%	3.8%



ST. PHILIP'S COLLEGE ETHNICITY ENROLLMENT TRENDS

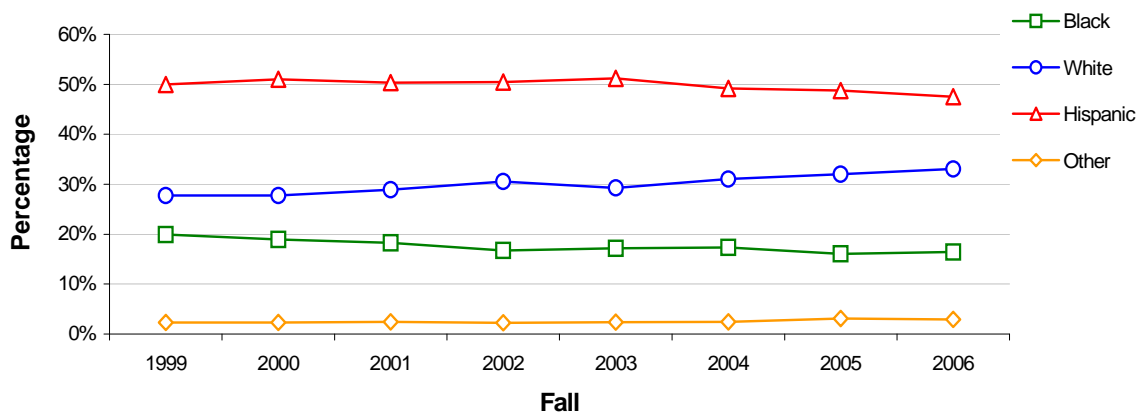
TOTAL STUDENTS

FALL	1999	2000	2001	2002	2003	2004	2005	2006
Black	1,610	1,571	1,577	1,564	1,696	1,837	1,640	1,628
White	2,241	2,300	2,495	2,852	2,889	3,280	3,264	3,272
Hispanic	4,033	4,230	4,346	4,710	5,060	5,201	4,967	4,708
Other	188	192	212	210	235	257	316	291



PERCENTAGE

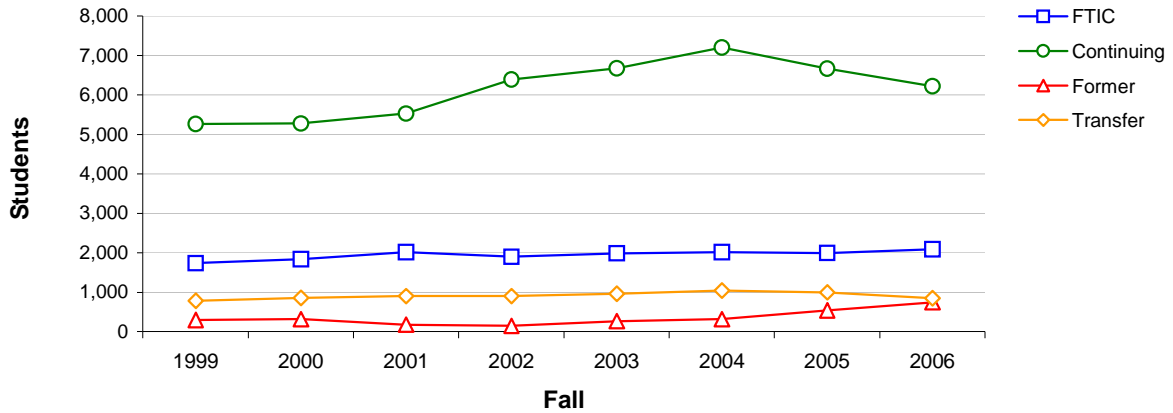
FALL	1999	2000	2001	2002	2003	2004	2005	2006
Black	19.9%	18.9%	18.3%	16.8%	17.2%	17.4%	16.1%	16.4%
White	27.8%	27.7%	28.9%	30.5%	29.2%	31.0%	32.0%	33.1%
Hispanic	50.0%	51.0%	50.4%	50.4%	51.2%	49.2%	48.8%	47.6%
Other	2.3%	2.3%	2.5%	2.2%	2.4%	2.4%	3.1%	2.9%



ST. PHILIP'S COLLEGE FTIC ENROLLMENT TRENDS

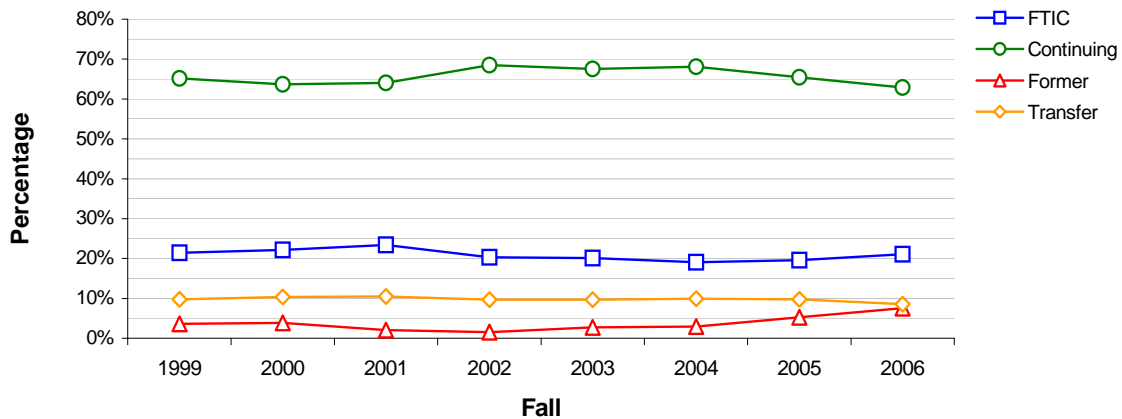
TOTAL STUDENTS

FALL	1999	2000	2001	2002	2003	2004	2005	2006
FTIC	1,731	1,836	2,018	1,894	1,986	2,015	1,992	2,086
Continuing	5,261	5,278	5,530	6,391	6,669	7,201	6,665	6,220
Former	295	320	178	147	269	315	536	744
Transfer	785	859	904	904	956	1,044	994	849



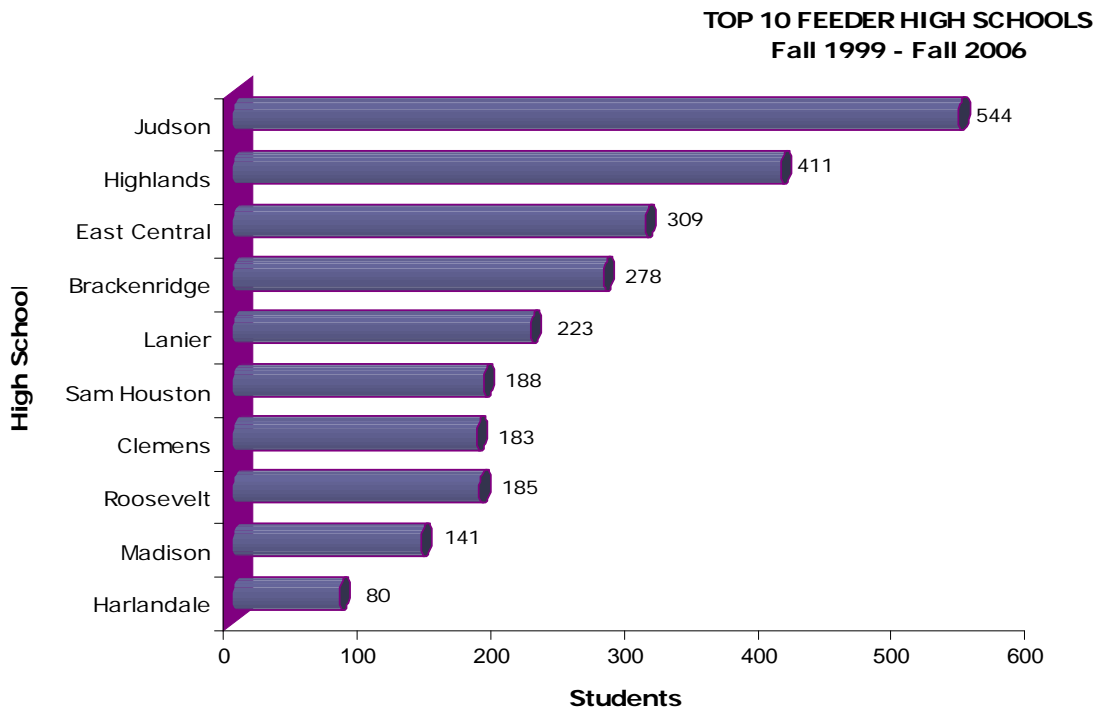
PERCENTAGE

FALL	1999	2000	2001	2002	2003	2004	2005	2006
FTIC	21.4%	22.1%	23.4%	20.3%	20.1%	19.1%	19.6%	21.1%
Continuing	65.2%	63.6%	64.1%	68.5%	67.5%	68.1%	65.4%	62.8%
Former	3.7%	3.9%	2.1%	1.6%	2.7%	3.0%	5.3%	7.5%
Transfer	9.7%	10.4%	10.5%	9.7%	9.7%	9.9%	9.8%	8.6%



ST. PHILIP'S COLLEGE TOP 10 FEEDER HIGH SCHOOLS

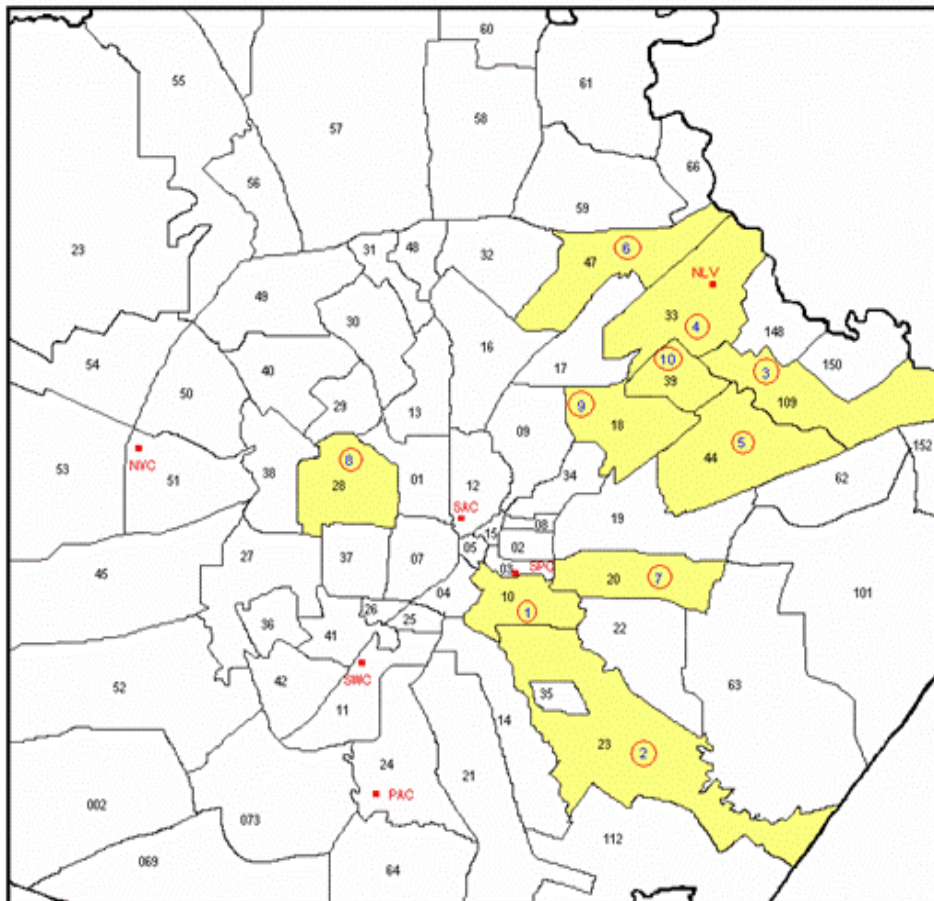
FALL															
1999		2000		2001		2002		2003		2004		2005		2006	
Highlands	50	Judson	68	Highlands	49	Judson	54	Judson	85	Judson	##	Judson	67	Judson	72
Judson	49	Highlands	58	Lanier	47	Brackendrige	46	Highlands	54	Highlands	62	Highlands	56	Highlands	55
East Central	41	Brackendrige	48	Judson	40	Lanier	30	East Central	42	East Central	51	East Central	35	East Central	44
Brackenridge	39	East Central	35	East Central	37	Madison	23	Roosevelt	38	Roosevelt	39	Clemens	33	Roosevelt	40
Sam Houston	31	Sam Houston	26	Brackenridge	34	Highlands	27	Brackenridge	33	Sam Houston	34	Southwest	32	Madison	30
Jefferson	28	Burbank	24	Madison	27	Roosevelt	27	Lanier	30	Lanier	31	Roosevelt	26	Clemens	29
Harlandale	21	Clemens	24	Clemens	26	East Central	24	Sam Houston	27	Madison	30	Burbank	25	Southwest	28
Kennedy	15	Lanier	22	Sam Houston	26	Clemens	23	Madison	26	Brackenridge	28	Lanier	24	Sam Houston	27
McCollum	15	Jefferson	21	Fox Tech	24	Burbank	20	Clemens	24	Clemens	24	Brackenridge	23	Brackenridge	27
Holmes	13	South San	21	Harlandale	15	Fox Tech	17	Harlandale	21	Fox Tech	23	Memorial	20	Lanier	26
						Sam Houston	17	Southside	21	Harlandale	23				



ST. PHILIP'S COLLEGE TOP 10 FEEDER ZIP CODES

FALL															
1999		2000		2001		2002		2003		2004		2005		2006	
78210	480	78210	472	78210	475	78210	501	78210	506	78223	479	78210	466	78210	448
78223	414	78223	408	78223	414	78223	442	78223	447	78210	470	78244	413	78223	417
78233	300	78109	330	78109	344	78244	396	78244	416	78244	455	78223	403	78109	399
78228	283	78244	317	78244	343	78233	382	78233	385	78233	391	78233	367	78233	372
78220	279	78233	307	78207	335	78109	374	78109	360	78109	381	78109	357	78244	359
78244	272	78239	263	78233	332	78207	331	78207	354	78220	354	78220	293	78247	276
78109	271	78220	255	78239	287	78239	300	78220	313	78218	316	78218	288	78220	261
78218	240	78228	236	78220	260	78218	283	78218	288	78207	306	78247	274	78228	258
78207	235	78207	230	78218	255	78220	279	78247	261	78217	287	78239	272	78218	245
78239	235	78218	227	78217	240	78217	258	78239	258	78228	279	78207	269	78239	235
										78247	279				

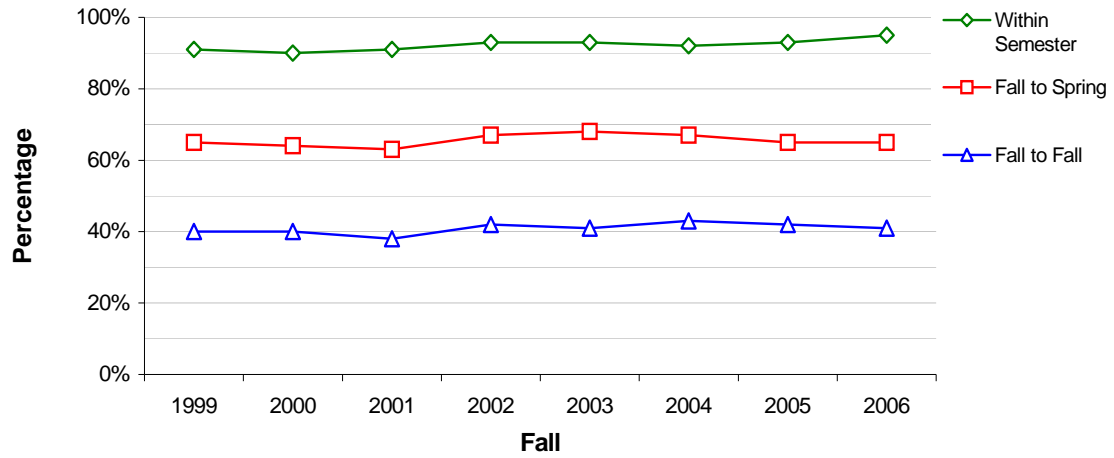
TOP 10 FEEDER ZIP CODES FALL 2006



ST. PHILIP'S COLLEGE RETENTION TRENDS

PERCENTAGE

FALL	1999	2000	2001	2002	2003	2004	2005	2006
Within Semester	91%	90%	91%	93%	93%	92%	93%	95%
Fall to Spring	65%	64%	63%	67%	68%	67%	65%	65%
Fall to Fall	40%	40%	38%	42%	41%	43%	42%	41%



DEFINITIONS

FTIC Student:	Student entering college for the first time with high school diploma or GED.
Continuing Student*:	Student that has been enrolled at St. Philip's College within one year.
Former Student:	Student that has not been enrolled at St. Philip's College for more than one year.
Transfer Student:	College student attending St. Philip's College for the first time.

*Includes some dual-credit students