

Student Success Newsletter

St. Philip's College, 1801 Martin Luther King Dr., San Antonio, TX 78203

St. Philip's College - Southwest Campus, 800 Quintana Rd., San Antonio, TX 78211

Student Success Leadership Team



Dr. Mordecai Brownlee
Vice President for Student Success



Dr. Paul Machen, II
Dean for Student Success



Christina Cortez
Dean for Student Success

Editors: Rosalinda Rivas, Eitandria Tello

Quality Enhancement Plan – Ethical Decision-Making

St. Philip's College is accredited by the Southern Association of Colleges and Schools Commission on Colleges (SACSCOC). Part of this process is the QEP (Quality Enhancement Plan) to promote student success. Our QEP topic is Ethical Decision-Making.

QEP Focus: Ethical decision-making is the ability to connect values and choices to actions and consequences.

QEP Goal: Students engage in specific measurable academic activities to enhance their ethical decision-making skills.

Ethical Decision-Making Process:

- *Stop and think to determine the facts.
- *Identify the options.
- *Consider consequences for yourself and others.
- *Make an ethical choice and take appropriate action.



MESSAGE FROM OUR VICE-PRESIDENT:

Happy March Everyone!

Greetings SPC Tigers –

This month Student Success is leading an initiative called, "Tigers Commit to Complete" here at St. Philip's College. The goal of this week is to encourage ALL students to (a) define their path toward program completion, and (b) increase student knowledge of all the resources available to ensure success. For more information, please stop by Sutton Learning Center (SLC) 102 and ask for Liz Castillo!

Dr. Mordecai Ian Brownlee
Vice President for Student Success
St. Philip's College

Important Dates

March 8	Daylight Saving Begins (Spring forward)
March 9-15	Spring Break (College closed)
March 12	2020 Census Invitation Letter (US Census Bureau); Designated online sites at SPC: MLK: CLR, Library 2nd floor Open Computer Lab SWC: ITC, Bldg. 1, Library Computer Lab Off-Site: GSVOTC, 202 Connelly St., Computer Lab
March 18-21	Flex I (First 8 Weeks) Final Exams
March 23	Flex II (Second 8 Weeks) Classes begin
March 30	Census Date (Flex II)
April 1	Census Day (2020 Census, US Census Bureau)

Student Success in the SLC – MLK Campus

For more information, contact Charleen Brammer at 210-486-2468 or 210-486-2275.

SLC 102 Point of Contact

SPC Safe **SPACE** Advocacy Center
Counseling Services
Social Services Assistance
Disability Services
Service Learning/Financial Literacy
Student Conduct/Title IX Programs

Sasha Wilhelm
Sasha Wilhelm
Sasha Wilhelm
Maria Botello
Elizabeth Castillo
John Martin

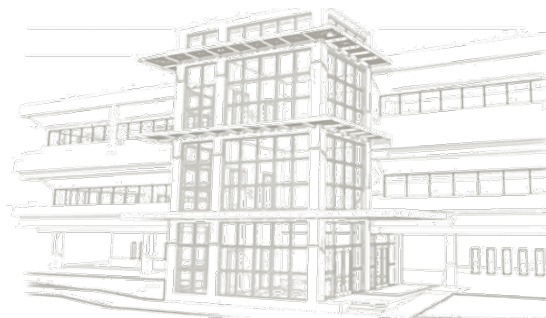
SLC 127 Point of Contact

SPC Health Center

Elijah Casillas

Spring 2020 Hours of Operation

Monday, Tuesday, Thursday, Friday	8:00 am – 5:00 pm
Wednesday	8:00 am – 7:00 pm
First Saturday of the Month	9:00 am – 1:00 pm





For more information, contact Dr. Mordecai Brownlee, Vice President of Student Success at 210-486-2252.

St. Philip's College is committed to providing a supportive learning environment and to fostering safe, healthy relationships among our students. In this effort, Alamo Colleges District initiated AlamoCARES, a prevention, education and support program regarding dating violence, domestic violence, sexual assault and stalking. It is our sincere hope that AlamoCARES will empower you to make well-informed decisions about life issues that affect your college years and beyond.

Within the AlamoCARES site, you will find information on rights granted by **Title IX** and resources to help educate and assist you when dealing with harassment and sexual violence. Coming soon are events, training and opportunities to bring awareness when dealing with difficult issues and creating discussion opportunities with students. Visit us at <http://alamo.edu/spc/alamocares/> for more information.

The Alamo Colleges District encourage individuals to bring forward information/complaints about sexual harassment and sexual violence. **Retaliation** against any **individual who reports or participates** in the investigation of alleged violations is **strictly forbidden** and will be **enforced** by the College administration.

If you believe you have experienced **Sexual Misconduct** you may consider the following options:

- Contact **Campus Police** at 210-485-0099 (non-emergency) or 210-485-0911 (emergency)
- Seek **medical attention** at a hospital or with a physician
- **Report the incident** at www.alamo.edu/TitleIXCoordinator/ (call John Martin 210-486-2746)
- **Contact SPC Counseling Services** at 210-486-2333 (for confidential counseling and or referrals)
- Contact **parents, relatives or close friends** for support

H.1.1 Equal Education and Employment Opportunities (Policy) www.alamo.edu/district/policies/
AlamoCARES has additional **Title IX** information and resources at: www.alamo.edu/spc/AlamoCARES

ATTENTION STUDENTS!

All entering freshmen, former and transfer students are now required to complete "**Sexual Assault Prevention for Community Colleges**". Sexual Assault Prevention for Community Colleges is an online survey and course addressing critical life skills. The training is our way of informing St. Philip's College students about **Title IX** standards, reporting violations and resources available. **All entering freshmen, former and transfer students are required to complete the training before the end of their first semester of classes at St. Philip's College (to avoid a registration hold being placed on their account).**

To access the Sexual Assault Prevention for Community Colleges training:

1. Always sign in through ACES at <https://alamoaces.alamo.edu>.
2. Look for the AlamoCARES box on the Student tab and read the important message before accessing the course. Note: an alternative training is available; see your Vice President for Student Success for assistance.
3. Click on the link provided, and complete the confidential pre-survey at the start of the course. The Alamo Colleges District does not receive a copy of your responses.
4. The quiz at the end of the course is required to document your completion, but the score is not recorded and will not impact you in any way. Completion is documented on your student record.

You Have the Right to Feel Safe.

Academic and Career Advising Services (MLK Campus)

For more information contact Arianna Lay at 210-486-2381.

Event: New Student Orientation

Date/Time: Tuesdays 9:00 am – 12:00 pm
Wednesdays 3:00 pm – 6:00 pm

Location: Center for Learning Resources (CLR), Room 108

Summary: Check your student email as you will be receiving periodic notifications from your assigned Certified Academic Advisor with important information. You can register for New Student Orientation at <https://spcweb.alamo.edu/StudentSuccess/Registration.aspx>.



Be Wise, Get Advised: Contact your Certified Advisor today. Below are the steps to identify who your advisor is:

1. Log into ACES
2. Click on the **My Page** tab (4th tab from the left)
3. Under **Academic Profile** (on the left) select the **current term** and press **Go**
4. Your advisor's name will appear under "Advisors"
5. Visit your advisor

Banner ID and Photo ID Required!

Hours of Operation for Appointment Based Academic Advising:


Monday - Thursday: 8:00 am – 5:00 pm

Hours of Operation for Walk-In Academic Advising:

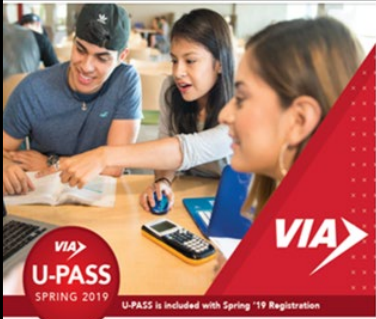
Wednesday: 5:00 pm – 7:00 pm


Friday: 1:00 pm – 5:00 pm

First Saturday of the month: 9:00 am – 1:00 pm

 ALAMO COLLEGES AlamoINSTITUTES An organization of six career pathways designed for students who have key interests, such as, but not limited to the following areas:	
Creative & Communication Arts Institute	<i>The Arts, Audio/Video Technology and Communications*</i>
Business & Entrepreneurship Institute	<i>Business Management & Administration, Finance, Hospitality & Tourism, and Marketing*</i>
Health & Biosciences Institute	<i>Health Sciences*</i>
Advanced Manufacturing & Logistics Institute	<i>Architecture, Construction, Manufacturing, Transportation, Distribution & Logistics*</i>
Public Service Institute	<i>Education, Training, Government, Public Administration, Human Services, Law, Public Safety, Correction and Security*</i>
Science & Technology Institute	<i>Agriculture, Food & National Resources, Information Technology, Science, Technology, Engineering and Mathematics*</i>







ALAMO COLLEGES DISTRICT

Your student ID is your VIA U-Pass

Alamo Colleges District has partnered with VIA to offer the new U-Pass to all students, faculty and staff. For the Spring 2019 semester, your Alamo Colleges Student ID is your U-Pass to ride on all VIA mainline bus routes. Just show your Student ID to the bus operator when boarding.

Unlimited bus ridership!

For more information visit

<https://www.alamo.edu/news-events/news/2019/01-january/via-buss-pass/>

Academic and Career Advising Services (continued)

For more information contact Arianna Lay at 210-486-2381.

Institute 1: Creative & Communication Arts

Konnie Harper-Thompson
kharper-thompson@alamo.edu

Institute 2: Business & Entrepreneurship

Yolanda Ward yward@alamo.edu
James Satchell jsatchell@alamo.edu
Joseph Hernandez jhernandez31@alamo.edu

Institute 3: Health & Biosciences

Janet Hart jhart26@alamo.edu
Frances Calderon fcalderson4@alamo.edu
Irma Lopez isanchez17@alamo.edu
Teresa Hopwood thopwood2@alamo.edu
Tricia McElligott tmcelligott@alamo.edu
Nathaniel Martinez nmartinez324@alamo.edu
Doug Gable dgable@alamo.edu
Jessica Perez jperez1494@alamo.edu
Juan Venegas jvenegas21@alamo.edu

Advising welcomes its newest advisor, Xaviera Toussaint!

Alumni Affairs (MLK Campus)

For more information contact Dr. Sharon Crockett-Ray at 210-486-2887.

If you are looking for a way to stay in touch with SPC, there is no better way than joining the Alumni and Friends Association. Membership information is at <https://www.alamo.edu/spc/alumni-affairs/>.

Bae-B-Safe (MLK Campus)

For more information contact Tracy Watts at 210-486-2538.

BAE-B-SAFE works to support educational success and increase graduation rates by preventing unplanned pregnancies and preparing young people with life skills to protect their future. Empower and educate yourself about healthy sexual behaviors. Participate in one of our programs to earn gift cards! Visit us in the Center for Health Professionals (CHP) Building, Room 202A. (Must be 14-19 years of age to participate.)



Business Office (MLK Campus)

For more information contact Sofia Zavala at 210-486-2247.

The Business Office staff can answer questions about installment plans, billing, or tuition discounts and waivers. For more information call Sofia Zavala (210-486-2247), email dst-vbo2@alamo.edu, or visit <https://www.alamo.edu/district/business-office/>.

Institute 4: Advanced Manufacturing & Logistics Automotive Technology (MLK Campus)

Yvonne Benton ybenton@alamo.edu
Christine Saucedo csauceda1@alamo.edu

Institute 4: Advanced Manufacturing & Logistics (Southwest Campus)

Blair Hannon bhannon@alamo.edu
Sarah Ramirez sramirez260@alamo.edu
Carlos Solis csolis@alamo.edu
Jennifer Salmeron jleal@alamo.edu

Institute 5: Public Service

Christine Saucedo csauceda1@alamo.edu
Konnie Harper-Thompson kharper-thompson@alamo.edu

Institute 6: Science & Technology

Meredith Bess mbess@alamo.edu
Gloria Jose gjose@alamo.edu



The U.S. Census is hiring. If you have a work permit you can work for the Census. Apply at: <https://2020census.gov/en/jobs.html>

Bookstore (MLK Campus)

For more information contact Jorge Marines at 210-534-8024.



BOOKSTORE

St. Philip's
College

Event: Spring Store Hours

Date/Time: Monday – Thursday 7:45 am – 5:00 pm
Friday 7:45 am – 2:00 pm

Location: Turbon Student Center (TSC), Bookstore

Summary: Come in to inquire about our textbook low price guarantee, discounts on technology, and much more. To view bookstore information, or search for textbook options, visit <https://www.bkstr.com/stphillipsstore>. You can also reach us via email at stphilips@bkstr.com.

Child Development Center (MLK Campus)

For more information contact Monica Guzman at 210-486-2501.

The Child Development Center (CDC), located at 2207 Wyoming Dr. (78203), provides Summer Child Care. Enrollment begins March 2, 2020. Payment assistance and subsidized rates are available for SPC students who qualify. For more information call us at 210-486-2500 or visit <https://www.alamo.edu/spc/child-dev-center/>.

Counseling Services (MLK Campus)

For more information contact Sasha Wilhelm at 210-486-2827.

DACA Allies - Find more resources (such as access to scholarships and legal assistance) for Deferred Action for Childhood Arrivals (DACA) at <https://www.alamo.edu/spc/admissions/specific-populations/daca/> or speak confidentially to District Coordinator Carmen de Luna-Jones (210-485-2080), SPC Director Elizabeth Castillo (210-486-2473), or SPC Counselor Rosalinda Rivas (210-486-2117).

Event: Personal Counseling – A Safe Space

Date/Time: Monday, Tuesday, Thursday, Friday 8:00 am – 5:00 pm
Wednesday 8:00 am – 7:00 pm
First Saturday of the Month 9:00 am – 1:00 pm

Location: Sutton Learning Center (SLC), Suite 102

Summary: College students talk to Counselors about many different types of issues like career concerns, anxiety, academic stress, relationships, stress associated with deportation/family legal status, trauma, coping with illness, procrastination, and more. Counselors also provide referrals and community resources. Make an appointment with a Counselor at 210-486-2333 if you want to talk about strategies that can help you manage your stress, school and life activities. See important links on our website: <https://www.alamo.edu/spc/experience-spc/current-students/support-centers/counseling-services/>.

Substance Abuse and Mental
Health Services Administration
(SAMHSA)

1-800-662-HELP (4357)

TTY: 1-800-487-4889

Treatment referral and info 24/7

www.samhsa.gov/find-help/national-helpline



International Transgender Day of Visibility
March 31st

Do you think you are the only one who is worried about your housing situation? About 50% of students who live off-campus experience poverty and many of them lack adequate housing. **You are not alone.**

Contact [Counseling Services](#), so we can share local resources with you.

Come by or call for an appointment.

(210) 486-2333

MLK: Sutton Learning Ctr., Room 102

SWC: LIFEspace Ctr., Bldg. 1, Room A-135

The SPC Safe **SPACE** Student Success & Advocacy Center (MLK Campus)

For more information contact Sasha Wilhelm at 210-486-2827.

Event: Helping Students Succeed at SPC
Location: Sutton Learning Center (SLC), Suite 102
Summary: The SPC Safe **SPACE** Student Success & Advocacy Center provides a Food Pantry, social services assistance, and possible access to a one-time emergency aid program through Trellis. For more information contact Sasha Wilhelm (210-486-2827).

Free Starbucks items available every Tue. & Wed. while supplies last



Event: Social Services Assistance
Date/Time: Monday and Friday 8:00 am – 5:00 pm
 Wednesday 10:00 am – 5:00 pm
 (till 7:00 pm 1st Wednesday of the month)

New Service!

Location: Sutton Learning Center (SLC), Room 101
Summary: St. Philip's College is expanding its Advocacy Center services to better meet the needs of our students and community. Our newest office, Social Services Assistance, helps students and local families by assessing state of Texas federal benefits. For more information contact Sandra Jones at 210-486-2824.

Disability Services (MLK Campus)

For more information contact Maria Botello at 210-486-2199.



Event: **Schedule your appointment.** To be eligible for disability-related services, students must have a disability as defined by the **Americans with Disabilities Act of 1990 (ADA)** and **Section 504 of the Rehabilitation Act of 1973.**

Date/Time: Monday, Tuesday, Thursday, Friday 8:00 am – 5:00 pm
 Wednesday 8:00 am – 7:00 pm
 First Saturday of the Month 9:00 am – 1:00 pm

Location: Sutton Learning Center (SLC), Suite 102
Summary: Disability Services ensures reasonable academic support to qualifying students with disabilities. We ensure our students have access to the latest information and technologies. For more information and access to the online registration system, visit <https://www.alamo.edu/spc/experience-spc/current-students/support-centers/disability-services/>.

Inclement Weather Closure
 Please be safe and take precaution. For the most up-to-date information on college closures, call the weather line (210-485-0189), go to **Alamo Alert** at <https://www.alamo.edu/spc/about-spc/compliance/emergency-information/alamo-alert/>, or check social media channels.

ROAD CLOSURES:

St. Philip's College is experiencing growth! Find all of the latest updates for MLK and SWC at <https://www.alamo.edu/spc/cip>.

- Road closures – The corner of Mittman and Dakota streets; and from the circular drive on Wyoming St. to the intersection of Walters St.
- Walkway closure – Sidewalk between the Campus Center Bldg. and Norris Technical Bldg.
- Entrance closure – SLC's northwest entrance/exit by elevators leading to Mittman St.



The U.S. Census is hiring. If you have a work permit you can work for the Census. Apply online: <https://2020census.gov/en/jobs.html>



Did you have a great experience with a service offered at the college or do you want something addressed? You can now do that with our "Feed the Tiger" form. We want to hear from you and address your concerns. Click on the orange button at <http://spcweb.alamo.edu/feedback/index.html>.

Good Samaritan Veteran's Outreach & Transition Center (Off-Site)

For more information contact William Moseley at 210-486-2506.

The GSVOTC, located at 202 Connelly St. (near the St. Philip's College campus), provides free personalized services to active duty service members, veterans, their families and the community. This includes referral services, job training, financial counseling, health and wellness, business start-up, and academic advisement. We provide no cost legal services by a licensed attorney. See us Monday-Friday 8 am - 5 pm.



The Selective Service System reminds all men to register upon their 18th birthdays.

This is the law. Register while you are applying for federal student aid (check "Register Me" on FAFSA). You may be denied benefits or a job if you have not registered. Late registrations are accepted until a man's 26th birthday. A person's citizenship status is not shared. Registration forms are available at <https://www.sss.gov>, and any U.S. Post Office.

Event: Complete your 2020 Census Online (Count Me In – Cuenta Conmigo)

Date/Time: March 12 – June 30 (Mon. – Fri.) 8:00 am – 5:00 pm

Location: GSVOTC Computer Lab

Summary: Our computer lab is one of three sites designated for completing and submitting the Census online. **Census Day (April 1)** is observed nationwide. When you respond to the census, you'll tell the U.S. Census Bureau where you live as of April 1, 2020. Census takers will begin visiting homes that haven't responded to the 2020 Census to help make sure everyone is counted (May-July).



St. Philip's College

Offers GED Face-to-Face classes, GED Online (English and Spanish), and ESL classes.

For more information visit:

<https://www.alamo.edu/spc/experience-spc/community/community-resources/ged/ged-face-to-face-preparation-english-and-spanish/>

International Student Services (MLK Campus)

For more information contact Meredith Bess at 210-486-2147.

Event: Resources for F-1 and M-1 visa holders

Location: Welcome Enrollment Center (WEC), Room 106-J

Summary: Learn more at <https://www.alamo.edu/spc/admissions/specific-populations/international-student-services/>.

- Immigration matters, such as obtaining F-1 student visas, maintaining full-time enrollment, transferring administration of your SEVIS I-20 record between schools, and traveling outside of the United States
- Academic advising available to assist ELL and international students with course and program planning
- Employment restrictions and options and obtaining work authorization
- Adjustment to St. Philip's College and to life in San Antonio and the United States
- Provide letters for verification of your F-1 status for various purposes, such as obtaining a Texas driver's license or identification card

Library Resources and Services (MLK Campus)

For more information contact April Schramm (210-486-2357), or Andrew Rivera (210-486-2564).

Event: Spring Hours

Date/Time: Monday – Thursday 7:00 am – 8:00 pm
Friday 7:00 am – 5:00 pm
Saturday 9:00 am – 3:00 pm

Location: Center for Learning Resources (CLR)

Summary: For assistance with the databases, type your question in the **ASK US** section found at the top of the library homepage: <https://www.alamo.edu/spc/library>. You can help improve our library services by taking our survey (click on the **Ask Us** and **Provide Library Services Feedback** links, or go to <https://spcguide.libguides.com/c.php?g=478209&p=3269708>). For your convenience, we are now a designated site for your **2020 Census** online submission (through June 30). See details on page 15.

[Ask Us](#)



Military Support Services (Offices at Military Installations)

For more information contact Betsy Hamilton at 210-486-2610.

The Military Support Services (MSS) Team is honored to serve our Active Duty Military, National Guard, Reserve students and their dependents at SPC and at Joint Base San Antonio. Email the Team at dst-military@alamo.edu or phone (210) 486-2001.

Available Services includes, but is not limited to:

- Academic and career exploration and information
- Admission and enrollment services
- Placement and Texas Success Initiative (TSI) questions
- Residency classification issues
- ACES (Student Portal) navigation assistance
- Basic financial aid assistance
- Tuition Assistance (TA) and MyCAA* funding help and information
- Preliminary advisement, Military and MyCAA* education and training plans
- Graduation applications
- Referrals

Offerings for our Military and Veteran Families:

- Military (NSO) at JBSA sites for those using TA/MyCAA (call 210-486-2001 to register)
- [RESERVED Courses at Fort Sam Houston, Lackland and Randolph](#)
- [RESERVED Online Courses](#)
- [RESERVED Science Courses](#) –see schedule in ACES (**Reserved Mil/Vet/Dependents**)
- [Military Spouse Career Advancement Account](#)

**Veterans
Crisis Line**



1-800-273-8255
PRESS 1

For more information, view our webpages:

JBSA Lackland

alamo.edu/Lackland

Air Force Education Ctr.
Bldg. 5725, Room 144
Mon-Fri 0800-1600

JBSA Fort Sam Houston

alamo.edu/fortsam

Army Education Center
Bldg. 2248, Room 206
Mon-Fri 0730-1530

JBSA Randolph

alamo.edu/randolph

Air Force Education Center
Bldg. 208, Room 10
Mon-Fri 0800-1600

GSVOTC

202 Connelly St.
Room 110D
Mon-Fri 0800-1700

JBSA Spring Flex II begins on March 23, register online through ACES today! Ask your Advisor if taking a Spring Flex II course will help you achieve free tuition for summer courses under the Summer Momentum Program. Classes are now available face to face and online.

CENSUS 101: WHAT YOU NEED TO KNOW

The 2020 Census is closer than you think!
Here's a quick refresher of what it is and why it's essential that everyone is counted.

Everyone counts.

The census counts every person living in the U.S. once, only once, and in the right place.



It's about fair representation.

Every 10 years, the results of the census are used to reapportion the House of Representatives, determining how many seats each state gets.



It's in the constitution.

The U.S. Constitution mandates that everyone in the country be counted every 10 years. The first census was in 1790.



It's about \$675 billion.

The distribution of more than \$675 billion in federal funds, grants and support to states, counties and communities are based on census data. That money is spent on schools, hospitals, roads, public works and other vital programs.



It's about redistricting.

After each decade's census, state officials redraw the boundaries of the congressional and state legislative districts in their states to account for population shifts.



Taking part is your civic duty.

Completing the census is mandatory: it's a way to participate in our democracy and say "I COUNT!"



Your response matters:

CENSUS 2020:

It is estimated that an undercount of Texas' population by even 1% in 2020 could result in a \$300 million loss of federal funding. To learn how Census data impacts you and your community [click here](#), or visit <https://2020census.gov/>.

Did you know . . .

By law, the Census Bureau cannot release any identifiable information about you, your home, or your business, even to law enforcement agencies. That's protected under Title 13 of the U.S. Code.

When you respond to the census, your answers are kept anonymous. They are used only to produce statistics. To learn more about how we protect your privacy [click here](#), or visit <https://2020census.gov/>.

Respiratory Care involves the assessment and therapeutic management of those patients diagnosed with cardiopulmonary disease. For more information contact Christa Mitchell at cmitchell86@alamo.edu.

Next Info Session: March 19, 11:30 a.m.

Phi Theta Kappa Honor Society (MLK Campus)

For more information contact Maria Botello at 210-486-2199.



Students who have a cumulative (overall) GPA of 3.5 or higher and have completed at least 12 college hours are qualified! Graduate with honors by accepting membership! For more information about this award winning honor society, contact a Chapter advisor at <https://www.alamo.edu/spc/experience-spc/campus-life/get-involved/honor-society/> and visit the organization's website <http://www.ptk.org/Join.aspx>.

Records and Registration (MLK Campus)

For more information contact Tracy Shelton at 210-486-2292.

Contact staff in Records and Registration or Admissions, to get answers about FERPA, cumulative hours, grades, and GPA. The staff is dedicated to your success as a student. Let us know how we can help by calling 210-486-2700, or visiting <https://www.alamo.edu/experience-the-alamo-colleges/current-students/transcripts-and-records/>.

The last day for **Incomplete "I" Grades** to be completed are as follows:

Due Date	For all parts of the term
April 13, 2020	Fall 2019



SPC Annual Scholarship Golf Tournament (MLK Campus)

For more information contact Dr. Sharon Crockett-Ray at 210-486-2576, or 210-486-2887.

Event: 12th Annual Scholarship Golf Tournament
Date/Time: March 6 7:00 am
Location: The Republic Golf Club, 4226 S.E. Military Dr. (78222)
Summary: The purpose of the tournament is to raise scholarship funds for our students. Your contribution will fund tuition and textbook costs for students seeking degrees and certificates from more than 100 career options. Registration begins at 7:00 a.m.; Tee Time is at 8:00 a.m. For more information contact Dr. Sharon Crockett-Ray (210-486-2576), or visit <https://www.alamo.edu/spc/about-spc/college-offices/advancement-grants/golf-tournament/>.



Strategies of Behavioral Intervention (MLK Campus)

For more information contact Maria Botello at 210-486-2199.

The Strategies of Behavioral Intervention (SOBI) mission is to promote student, faculty and staff success and campus safety. The SOBI protocol guides our college community to recognize, prevent and respond to incidents. Learn more at <https://www.alamo.edu/spc/about-spc/compliance/strategies-of-behavioral-intervention-sobi/>.

Student Conduct/Title IX (MLK Campus)

For more information contact John Martin at 210-486-2746.

All entering freshmen, former and transfer students are now required to complete "Sexual Assault Prevention for Community Colleges". Registration holds have been placed on student accounts who still need this training. The exam at the end of the training is required to document your completion.

To complete the training: (1) Login to ACES at <https://alamoaces.alamo.edu>, (2) Select the Student Tab, and (3) Click the link located in the AlamoCARES box to begin the training.

Event: Cesar Chavez March for Justice
Date/Time: March 28 8:00 am – 1:00 pm
Location: Meet in the Turbon Student Center (TSC), Lobby (We will provide transportation to the site, and t-shirts for a limited number of students. The March starts on the west side of town at 1314 Guadalupe St., 78207).
Summary: Celebrate the life of Cesar Chavez, a great man who significantly impacted the lives of others. He was a union leader and labor organizer who believed in nonviolence and better treatment of farm workers. He led the United Farm Workers union for 31 years.



Abuse can look different for immigrants. Call our confidential 24-hour bilingual crisis/domestic violence helpline: 651.772.1611

<https://casadeesperanza.org/>



Cesar Chavez
March for Justice

VOTETEXAS.GOV
Primary Election
Tuesday, March 3, 2020
<https://www.votetexas.gov/>

AlamoPROMISE Program - Complete your steps by March 20!

Contact Us: Admissions, Business Office, Student Financial Aid at 210-21ALAMO (210-212-5266), or call Toll Free at 1-844-20ALAMO (1-844-202-5266).

The **AlamoPROMISE Scholar Program** makes college more accessible to graduating seniors by providing the support necessary to earn a certificate or associate's degree at one of the five Alamo Colleges: Northeast Lakeview College, Northwest Vista College, Palo Alto College, San Antonio College, and St. Philip's College.



It is our goal to allow as many eligible students as possible to take advantage of the exceptional opportunity offered by **AlamoPROMISE**, and we understand that completing these two steps takes time. **To allow for this, we have set a new deadline for completing these last two steps — midnight, March 20, 2020.**

1. (The period for new "Save Your Seat" application is closed.)
2. File for Financial Aid (Free application for FAFSA or TASFA) by March 20
3. Apply to an ACD College (www.applytexas.org) by March 20



Completing these steps ensures that tuition and mandatory fees at the Alamo Colleges are covered for Bexar County students who graduate from participating high schools. As last-dollar funding, **AlamoPROMISE** covers the gap between financial aid and the cost of tuition for up to three years. Your household income does not disqualify you and because we know plans sometimes change, you are not locked into a commitment.

Need assistance? We are here to help: **St. Philip's College** (210-486-2150), spc-recruit@alamo.edu. Learn more at <https://www.alamo.edu/promise/>, or email the **AlamoPROMISE team** at Promise@alamo.edu for assistance.

Student Financial Aid Office (MLK Campus)

For more information contact Grace Zapata 210-486-2269.

College Connection Financial Aid Saturdays are held in the Welcome Center (WEC), 106. All students needing assistance completing the FAFSA/TASFA are invited to attend. We hope to see you March 7.

- Students must complete the Apply Texas Application before submitting FAFSA/TASFA
- Students/Parents must use their 2017 income tax to apply for the 2019-2020 FAFSA/TASFA (Spring 2020 and Summer 2020)
- Students/Parents must use their 2018 income tax to apply for the 2020-2021 FAFSA/TASFA (Fall 2020)

For more **Financial Aid news** call 210-21ALAMO (210-212-5266), or call Toll Free at 1-844-20ALAMO (1-844-202-5266), email dst-sfs@alamo.edu, or visit <https://www.alamo.edu/spc/admissions/pay-for-college/financial-aid/>. Please have or include your Banner ID when calling or emailing.

DREAMers -- Complete the **TASFA** today. Our staff can assist in applying for college, state aid and scholarships, at our Community Education Training Ctrs:

Brackenridge (Eastside) Center, 532 N. Center (78202), 210-485-0280

Harlandale (Southside) Center, 901 March Avenue (78214), 210-989-5999

www.alamo.edu/district/etc

www.alamo.edu/district/daca



**COLLEGE CONNECTION
FINANCIAL AID
SATURDAYS**

Let us help you complete a **FAFSA or TASFA!**

SESSIONS | 9:00 AM - 1:00 PM

OCT	NOV	DEC	FEB	MAR	APR	MAY
5	2	7	1	7	4	2

Students are encouraged to complete the ApplyTexas Application before submitting a FAFSA/TASFA.

*Ensure information submitted on both FAFSA or TASFA match the ApplyTexas Application.

*Students/Parents must use their 2018 Tax Return and/or 2018 Untaxed Income information to complete the 2020 - 2021 FAFSA/TASFA.

alamo.edu/collegeconnection

SESSIONS ARE HELD AT ALL 5 COLLEGES!

 Northeast Lakeview College 1201 Kitty Hawk Rd. Universal City, TX 78148 (210) 484-5193 alamo.edu/nlc Financial Aid Office (210) 212-5266	 Northwest Vista College 3535 N. Edison Dr. San Antonio, TX 78251 (210) 484-4300 alamo.edu/nvc Financial Aid Office (210) 212-5266	 Palo Alto College 1408 W. Wilshire Blvd. San Antonio, TX 78224 (210) 484-3300 alamo.edu/pac Financial Aid Office (210) 212-5266	 St. Philip's College 1801 Martin Luther King Dr. San Antonio, TX 78203 (210) 484-2150 alamo.edu/spc Financial Aid Office (210) 212-5266	 San Antonio College 5819 N. Main Ave. San Antonio, TX 78212 (210) 484-0040 alamo.edu/sac Financial Aid Office (210) 212-5266
--	---	---	---	--

Log into ACES or contact your college Student Financial Aid office
alamo.edu/district/financial-aid

09/19

SPC March Calendar (MLK Campus)

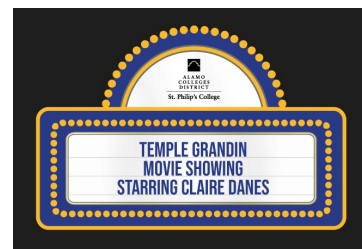
For more information contact Felicia Campos at 210-486-2641.

Event: Temple Grandin Movie Showing

Date/Time: March 3 (1st Showing) 10:00 am – 12:00 pm [RSVP Here](#)
March 3 (2nd Showing) 2:00 pm – 4:00 pm [RSVP Here](#)

Location: Turbon Student Center (TSC), Room 216

Summary: Sign up to see the movie that highlights the life of famed animal husbandry expert Dr. Temple Grandin! Although autistic, she triumphed over prejudice to become an innovator in the field of animal care, and a lifelong advocate for humane slaughtering practices. Light refreshments provided.



Event: Valiant Women in STEM Fields

Date/Time: March 4 10:00 am – 11:00 am

Location: Campus Center (CC), Heritage Room

Summary: Join us for our Spring 2020 Stem Lecture Series. Presenters include St. Philip's College President Dr. Adena Williams Loston, Dr. Stacie Koonhow, Edith Orozco, Karen McGill, Roxanne Perez, and Maria Rodriguez. Refreshments will be served. Learn more at <https://www.alamo.edu/spc/calendar/2020/march/stem-lecture-series/>.



Dr. Adena Williams Loston
President, St. Philip's College

Event: Speaker Dr. Temple Grandin, and Book Signing

Date/Time: March 17 10:00 am – 11:30 am

Location: Watson Fine Arts Theatre (WFAT), Auditorium

Summary: Our guest speaker, Dr. Temple Grandin, will talk about her amazing journey and how she became one of the first individuals on the Autism spectrum to provide her insights on the relationship between Autism and animals. A 30-minute book signing will follow the event.



March 27-29 8:00 pm – 9:00 pm
Watson Fine Arts Theater (WFAT), Auditorium

Join us as the St. Philip's College Theatre presents, Oedipus Rex, directed by Andrew Heinrich, on March 27-29 and April 2-5.

General admission is \$10. Alamo Colleges students and employees, seniors, SATCO, High School Students admission is \$5. (High School performance at 10:00 am on April 2 is FREE.) For more information call Maria Andrews (210-486-2205).

SPCs E. L. Turbon Student Center receives "Star of Distinction for Excellence Award" in 2019-2020 School of Architecture Competition



SPC Health Center (MLK Campus)

For more information contact Eliah Casillas at 210-486-2222.

Event: Blood Drive – South Texas Blood & Tissue Center
Date/Time: March 9 9:00 am – 2:00 pm
Location: Center for Health Professions (CHP), Atrium
Summary: Come give blood for a worthy cause.

**The Porch Campus Ministry
at St. Philip's College**
525 S. Mittman St.
Contact: Winnie Yeh, 1-281-749-1201

Weekly Events:
Prayer Time – Tuesday/Thursday 11-11:30 am (The Porch)
Women's Bible Study – Thursday 12-1pm (The Porch)
Sojourner's Bible Study – Wednesday 12-1pm (TSC #204)

Student Life (MLK Campus)

For more information contact Dr. Angela McPherson Williams at 210-486-2090.

Event: Celebrate our 122nd Anniversary and Phil the Mascot's Birthday
Date/Time: March 2 11:00 am – 1:00 pm
Location: Turbon Student Center (TSC), 1st Floor
Summary: Take a picture with Phil the Tiger, our Mascot. He looks good for his age (he's 122 years old)!

Event: Spirit Day with Birthday Cake
Date/Time: March 4 11:00 am – 1:00 pm
Location: Turbon Student Center (TSC), 1st Floor
Summary: Wear your favorite St. Philip's shirt or wear our school colors (royal blue and white)!

Event: Lady Tiger Basketball Game vs. University of the Incarnate Word
Date/Time: March 4 6:00 pm – 8:00 pm
Location: University of Incarnate Word, Cervera Wellness Center (WC)
Summary: Come cheer and support the Women's basketball team! Students, faculty, staff, and SPC sports fans are invited to attend.

Event: Tiger Basketball Game vs. Texas A&M San Antonio
Date/Time: March 4 8:00 pm – 10:00 pm
Location: Health & Fitness Center (HFC), Gymnasium
Summary: Come cheer and support the Men's basketball team! Students, faculty, staff and SPC sports fans are invited to attend, enjoy entertainment, refreshments from the concessions stand and much more.

Event: Tiger Volleyball Game vs. Trinity University
Date/Time: March 5 7:00 pm – 9:00 pm
Location: Health & Fitness Center (HFC), Gymnasium
Summary: Come cheer for the volleyball team! Students, faculty, staff and SPC sports fans are invited to attend, enjoy entertainment, refreshments from the concessions stand and much more.

Event: Spirit Day
Date/Time: March 11, 18, and 25 11:00 am – 1:00 pm
Location: Turbon Student Center (TSC), Lobby
Summary: Wear your favorite St. Philip's shirt or wear school colors – royal blue and white.

Event: SGA Spring VPSS Town Hall Assembly
Date/Time: March 18 12:00 pm – 1:00 pm
Location: Turbon Student Center (TSC), Room 216
Summary: Meet Student Government Association officers and learn more about what's happening on campus. Lunch is provided.



Student Life (continued)

For more information, contact Dr. Angela McPherson Williams at 210-486-2090.



Event: Men of SPC Basketball Social

Date/Time: March 18 6:30 pm – 9:00 pm

Location: Turbon Student Center (TSC), Everett Viewing Room 216

Summary: Watch the Spurs game, enjoy the meal, and hang out with SPC faculty, staff, and students.

Event: Lunch and Lead

Date/Time: March 19 9:00 am – 10:00 am

Location: Turbon Student Center (TSC), Room 203/204

Summary: Come join us for an engaging hour of leadership, event planning support, and essential updates from the Department of Student Life. Brunch will be provided.

Event: Tiger Volleyball Game vs. University of the Incarnate Word

Date/Time: March 19 7:00 pm – 9:00 pm

Location: University of Incarnate Word, Cervera Wellness Center (WC)

Summary: Come cheer for the volleyball team! Students, faculty, staff and SPC sports fans are invited to attend.

Event: Spring Flex II Welcome Tent

Date/Time: March 23 and 24 7:00 am – 6:00 pm

Location: Center for Learning Resources (CLR), Breezeway

Summary: The Department of Student Life will assist in printing schedules, giving directions and maps, and provide snacks under the blue tent.

Event: Tiger Basketball Game vs. Northwest Vista College

Date/Time: March 23 8:00 pm – 10:00 pm

Location: Health & Fitness Center (HFC), Gymnasium

Summary: Come cheer and support the Men's basketball team! Students, faculty, staff and SPC sports fans are invited to attend, enjoy entertainment, refreshments from the concessions stand and much more.



Event: Student Org/Athletic Luncheon

Date/Time: March 25 11:30 pm – 1:00 pm

Location: Turbon Student Center (TSC), Everett Viewing Room 216

Summary: The Department of Student Life will recognize student organization members and athletes for their service, leadership and commitment during the 2019-2020 academic year.

Event: Tiger Volleyball Game vs. Northeast Lakeview College

Date/Time: March 26 7:00 pm – 9:00 pm

Location: Northeast Lakeview College, Wellness Center (WC)

Summary: Come cheer for the volleyball team! Students, faculty, staff and SPC sports fans are invited to attend.

Event: Lady Tiger Basketball Playoff Game vs. TBA

Date/Time: March 30 (Time TBA)

Location: TBA

Summary: Come cheer and support the Women's basketball team! Students, faculty, staff and SPC sports fans are invited to attend.

Event: Tiger Basketball Playoff Game vs. TBA

Date/Time: March 30 (Time TBA)

Location: TBA

Summary: Come cheer and support the Men's basketball team! Students, faculty, staff and SPC sports fans are invited to attend.



Student Life (continued)

For more information, contact Dr. Angela McPherson Williams at 210-486-2090.

- Event:** Tiger Volleyball Playoff Game vs. TBA
Date/Time: March 31 (Time TBA)
Location: TBA
Summary: Come cheer for the volleyball team! Students, faculty, staff and SPC sports fans are invited to attend.

2020 Census (MLK Campus, SW Campus, and Off-Site)

For more information visit <https://www.sabexarcourtmein.org/> or <https://2020census.gov/en.html>.

- Event:** 2020 Census Kick-Off (Count Me In – Cuenta Conmigo) *Save the Date!*
Date/Time: March 25 2:00 pm
Location: Center for Learning Resources (CLR), Library, 1st Floor Lobby
Summary: Join us for this important event. Did you know that 2020 Census data helps the federal government fund programs that aid higher education institutions and students, including the Federal Direct Student Loan and Pell Grant programs? The Census is an opportunity for students to make their voice heard and represent their communities.



- Event:** Complete your 2020 Census Online
Date/Time: March 12 – June 30
Monday – Friday 8:00 am – 5:00 pm
Locations: MLK Campus: Center for Learning Resources (CLR), Library, 2nd floor Open Computer Lab
SW Campus: Industrial Technology Center (ITC), Bldg. 1, Library C-123L, Computer Lab
Off-Site: Good Samaritan Veteran Outreach & Transition Center (GSVOTC), Computer Lab (202 Connelly St., 78203)
Summary: Starting in March 2020, homes across the country will begin receiving invitations to complete the 2020 Census. Once the invitation arrives, you should respond for your home in one of three ways: online, by phone, or by mail. The invitation will have a personalized access code, which you can use to respond to the census online. For your convenience, St. Philip's College has designated three computer labs for completing and submitting the Census online. **Census Day (April 1)** is observed nationwide. When you respond to the census, you'll tell the U.S. Census Bureau where you live as of April 1, 2020. Census takers will begin visiting homes that haven't responded to the 2020 Census to help make sure everyone is counted (May-July).

Tutoring Services and Service Learning (MLK Campus)

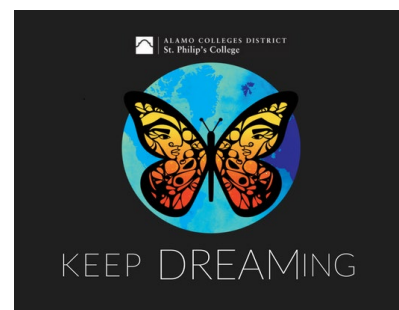
For more information contact Elizabeth Castillo at 210-486-2473.

DACA Allies

Speak confidentially to District Coordinator Carmen de Luna-Jones (210-485-2080), SPC Director Liz Castillo (210-486-2473), or SPC Counselor Rosalinda Rivas (210-486-2117). Find additional resources for Deferred Action for Childhood Arrivals (DACA) at <https://www.alamo.edu/spc/admissions/specific-populations/daca/>.

Financial Literacy Program

- Event:** Free Online Financial Coaching
Date/Time: By appointment
Location: <https://www.aie.org/coaching/>
Summary: This free service, in partnership with Trellis, is designed to help you make smart financial decisions. For more information contact Enida Rehome (210-486-2140).



Tutoring Services and Service Learning (continued)

For more information contact Elizabeth Castillo at 210-486-2473.

Event: Credit Human Workshop

Date/Time: March 23 12:00 am – 1:00 pm

Location: Turbon Student Center (TSC), Room 203A

Summary: Learn about repayment options. For more information contact Enida Rehome (210-486-2140).

Event: Student Loan Workshop – You’ve Got This!

Date/Time: March 24 12:00 am – 1:00 pm

Location: Turbon Student Center (TSC), Room 203A

Summary: Learn about repayment options. For more information contact Enida Rehome (210-486-2140).

Tutoring Services and Perpetual Book Loan Program

Event: General tutoring, a great place to study, and free Book Loan Program!

Date/Time: Monday – Thursday 8:00 am – 7:00 pm

Friday 8:00 am – 5:00 pm

Saturday 10:00 am – 3:00 pm

Location: Center for Learning Resources (CLR), 3rd floor Lobby (Circulation Desk)

Summary: Tutoring is available for several subjects. For more information contact Jared Boggs (210-486-2517). Learn more at <https://www.alamo.edu/spc/academics/academic-resources/tutoring-centers/tutoring-and-technology-center/>.

The Perpetual Book Loan Program is offered year-round and is available via online reservations at <https://www.alamo.edu/spc/experience-spc/current-students/student-resources/book-loan-program/>. For more information contact Liz Castillo (210-486-2473).

Veterans Affairs (MLK Campus)

For more information contact Veronica Griego at 210-486-2540.

Veterans Affairs	Tony Gable	lgable@alamo.edu	210-486-2521
Certified Academic Advisors:	Alicia Stolte	astolte2@alamo.edu	210-486-2539
	Vincent Garcia	vgarcia365@alamo.edu	210-486-2522

We are dedicated to providing the highest quality and comprehensive support to student veterans and their family members in an atmosphere that provides commitment, respect, and academic excellence. The Veterans Affairs office assists students by providing certification of courses and transmitting enrollment information to the Department of Veteran Affairs. For more information contact Veronica Griego (210-486-2540).

If you receive GI Bill Educational Benefits and are certified at least $\frac{3}{4}$ time, you could be eligible to work for the Veterans Affairs office. The federal work study positions have flexible work schedules. To apply, call 210-486-2111. View important information, resources and explore links on our visit at <https://www.alamo.edu/spc/admissions/specific-populations/military-dependents/veteran-affairs/>.

Event: New Student Orientation (February 17 – May 25)

Date/Time: Mondays 1:00 pm – 4:00 pm


New Student Orientation (June 1 – July 27)



Mondays 10:00 – 1:00 pm, or 1:00 pm – 4:00 pm

Location: Welcome Center (WEC), Room 207A

Summary: New students (Military, Veteran and dependent family members only) can register for New Student Orientation at <https://spcweb.alamo.edu/StudentSuccess/Registration.aspx>.





You can respond to the 2020 Census in Spanish. By April 1, 2020, every home will receive an invitation to participate in the 2020 Census. You will have three options for responding: Online. By phone. By mail.



Usted puede responder al Censo del 2020 en español. Para el 1 de abril del 2020, cada hogar recibirá una invitación para participar en el censo. Usted <https://2020census.gov/es.html>

Volunteer Income Tax Assistance (VITA) Program (MLK Campus)

For more information contact Kenneth Bankston at 210-486-2872.

The Business Information Solutions department is pleased to announce free Income Tax Preparation services. Client services include free VITA Program classroom instruction, and free asset-building and wealth-building education services. Services are for students and community members who earn up to \$60,000 annually. We look forward to serving you this tax year. For more information contact us at 210-486-2872, via email at spc-vita@alamo.edu, or visit <https://www.alamo.edu/spc/experience-spc/community/community-resources/vita/>.

HOURS OF OPERATION

VITA opening dates are **January 21 - April 15, 2020.**

Services are free

- **Monday, Wednesday:** 1 pm – 7 pm
- **Tuesday, Thursday, Friday:** 1 pm – 6 pm
- **Saturdays:** 9 am – 3 pm
- **Location:** Bowden Building (BOWD), Room 110

*Please note: We are a virtual site and we do drop at times. We offer **My Free Taxes (MFT)** to clients that choose to do their own tax preparation.*



On campus. Off campus. Everyone counts.

If you live off campus, you'll need to respond to the 2020 Census. Because unlike your on-campus classmates, you likely haven't been counted through campus housing. Here's your opportunity to impact funding for programs like Pell Grants and health care services.

2020CENSUS.GOV

Shape your future START HERE >

United States Census 2020

Census data impacts funding for things like:

- > School safety
- > Federal Pell Grant Program
- > Adult education grants
- > Agriculture, science, and engineering education
- > Community mental health services
- > Student wellness programs
- > Medical Assistance Program
- > School breakfast and lunch and after-school programs
- > State Children's Health Insurance Program

For more information, visit: 2020CENSUS.GOV

Shape your future START HERE >

United States Census 2020

Academic and Career Advising Services (SW Campus)

For more information contact Gina Jasso at 210-486-7185.

Event: New Student Orientation

Date/Time: Mondays 9:30 am – 12:30 pm

Location: Industrial Technology Center (ITC), Bldg. 1, Room B-172, Conference Room

Summary: Check your student email as you will be receiving periodic notifications from your assigned Certified Academic Advisor with important information. You can register for New Student Orientation at <http://spcweb.alamo.edu/StudentSuccess/Registration.aspx>.

Event: Tiger Commit to Complete

Date/Time: March 4 11:00 am – 2:00 pm

Location: Industrial Technology Center (ITC), Bldg. 1, Crossroads

Summary: Provides an opportunity for students to learn about campus resources, network with their peers, meet their advisor, obtain a student ID, compete in a Lego challenge and apply for graduation!


Academic and Career Advising Services (continued)

For more information contact Gina Jasso at 210-486-7185.



Event: Transfer Open House
Date/Time: March 4 11:00 am – 2:00 pm
Location: Industrial Technology Center (ITC), Bldg. 1, Crossroads
Summary: Provides an opportunity for graduating students to connect with a University representative for transfer options.

Event: Academic Advising by Appointment
Location: Industrial Technology Center (ITC), Bldg. 1, Room B-172
Summary: The SWC Advising hotline is 210-486-7281. Please monitor your student ACES email account for important appointment links from your advisor.



**Tiger PAWS (Personal Academic Writing Space)
Literary Art Journal**

St. Philip's students are encouraged to submit writing and artwork for publication consideration. Submission deadline is March 6th.

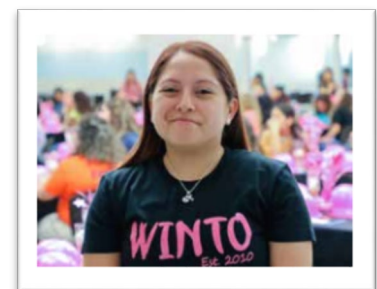
Learn more at <https://www.alamo.edu/spc/experience-spc/campus-life/get-involved/clubs-and-organizations/tigerpaws/>.

Applied Science & Technology (SW Campus)

For more information contact Diane Galvan at 210-486-7113.

Save the date!

Event: 11th Annual WINTO Conference
Date/Time: March 27 9:30 am – 2:00 pm
Location: Industrial Technology Center (ITC), Bldg. 1 and Parking Lot
Summary: Come to our Women in Non-Traditional Occupations (WINTO) annual conference. The conference caters to high school females seeking education and job exploration in Career Technical Education (CTE) fields. Listen to guest speaker April Wilkerson (American Youtuber), participate in CTE program demos and sessions, Career Fair, lab tours, and the Q&A Panel.



SPC Alumna Ashley Narvarez

AAS - Aircraft Technician
Airframe
Certificates - Aircraft
Structures Mechanics, and
Aircraft Mechanics

Bookstore (SW Campus)

For more information contact Jorge Marines at 210-534-8024.



BOOKSTORE

**St. Philip's
College**

Event: Spring Store Hours

Date/Time: Monday – Wednesday 8:00 am – 2:00 pm

Location: Industrial Technology Center (ITC), Bldg. 1, Bookstore

Summary: Come in to inquire about our textbook low price guarantee, discounts on technology, and much more. To search for textbook options, visit <https://www.bkstr.com/stphilipsstore>. You can also reach us at 210-486-7129, or via email at stphilips@bkstr.com.

Business Office (SW Campus)

For more information contact Claudia Hernandez at 210-486-7002.



Event: Spring Hours

Date/Time: Monday, Tuesday, Thursday 9:00 am – 1:00 pm

Wednesday 8:30 am – 3:30 pm

Closed for lunch each day 12:00 pm – 12:30 pm

Location: Industrial Technology Center (ITC), Bldg. 1, Room B-172

Summary: The staff can answer questions about billing, or tuition discounts and waivers. For additional services visit <https://www.alamo.edu/district/business-office/>.

Centers of Excellence for Math & Science (SW Campus)

For more information contact Maria Rodriguez at 210-486-7123, or Dr. Jo D. Duncan at 210-486-7121.

Our programs focus on expanding college and career awareness of science, technology, engineering and mathematics (STEM). Students that engage with us can receive a stipend for their time and effort. Call or visit our website at <https://www.alamo.edu/spc/academics/academic-resources/academic-centers/centers-of-excellence/>.

Counseling Services (SW Campus)

For more information contact Sasha Wilhelm at 210-486-2827.

DACA Allies - Find scholarships and legal assistance for Deferred Action for Childhood Arrivals (DACA) at

[https://www.alamo.edu/spc/admissions/specific-](https://www.alamo.edu/spc/admissions/specific-populations/daca/)

[populations/daca/](https://www.alamo.edu/spc/admissions/specific-populations/daca/) or speak confidentially to District Coordinator

Carmen de Luna-Jones (210-485-2080), SPC Director Elizabeth

Castillo (210-486-2473), or SPC Counselor Rosalinda Rivas

(210-486-2117).

Event: Personal Counseling – A Safe Space

Date/Time: Monday and Wednesday 8:00 am – 5:00 pm

Location: Industrial Technology Center (ITC), Bldg. 1, Room A-135

Summary: College students talk to Counselors about many different types of issues like career and academic concerns, anxiety, relationships, stress associated with deportation/family legal status, trauma, coping with illness, procrastination, and more. Counselors also provide referrals and community resource information. Let's talk about strategies that can help you manage your stress, school and life activities. See important resources at <https://www.alamo.edu/spc/experience-spc/current-students/support-centers/counseling-services/>.

Counselors can help address problems that interfere with your academic growth in college. See a Counselor if you believe your substance use is affecting your academic success.

***SAMHSA's Free Mobile Apps:
Substance Use Treatment Locator:***

https://www.samhsa.gov/search_results?k=substance+use+treatment+locator

SPC Safe **SPACE** Student Success & Advocacy Center (SW Campus)

For more information contact Sasha Wilhelm at 210-486-2827.

Event: Helping Students Succeed at SPC-SWC
Location: Industrial Technology Center (ITC), Bldg. 1, Student Services, Room B-172
Summary: The SPC Safe **SPACE** Student Success & Advocacy Center provides free services for students such as a quick Grab 'N Go snack, social service assistance, and possible access to a one-time emergency aid program through Trellis. For more information contact Sasha Wilhelm at 210-486-2827.



Event: Social Services Assistance
Date/Time: Tuesday and Thursday 9:00 am – 3:00 pm
Location: Industrial Technology Center (ITC), Bldg. 1, Student Services, Room B-172
Summary: St. Philip's College is expanding its Advocacy Center services to better meet the needs of our students and community. Our newest office, Social Services Assistance, helps students by assessing state of Texas federal benefits. For more information contact Sandra Jones at 210-486-2824.

New Service!



Disability Services (SW Campus)

For more information contact Maria Botello at 210-486-2199.



Event: **Schedule your appointment.** To be eligible for disability-related services, students must have a disability as defined by the **Americans with Disabilities Act of 1990 (ADA)** and **Section 504 of the Rehabilitation Act of 1973.**

Date/Time: Tuesday and Thursday 8:00 am – 5:00 pm
Location: Industrial Technology Center (ITC), Bldg. 1, Room A-135
Summary: Disability Services ensures reasonable academic support to qualifying students with disabilities. Our students have access to the latest information and technologies. Disability Services provides support, referrals and encouragement for our students with disabilities. Download forms at <https://www.alamo.edu/spc/experience-spc/current-students/support-centers/disability-services/>.

U.S. Citizenship and Immigration Services

Don't be afraid to ask for help

Immigration relief is available for victims of human trafficking, domestic violence and other crimes. Visit <https://www.uscis.gov/tools/humanitarian-benefits-based-resources/resources-victims-human-trafficking-other-crimes>.

Library Resources and Services (SW Campus)

For more information contact April Schramm (210-486-2357), or Andrew Rivera (210-486-2564).

Event: **Spring Hours**
Date/Time: Monday - Thursday 8:00 am – 7:00 pm
Friday 8:00 am – 5:00 pm
Location: Industrial Technology Center (ITC), Bldg. 1, Room C-123
Summary: For assistance with the databases, type your question in the **ASK US** section found at the top of the library homepage: <https://www.alamo.edu/spc/library>. You can help improve our library services by taking our survey (click on the **Ask Us** and **Provide Library Services Feedback** links, or go to <https://spcguide.libguides.com/c.php?g=478209&p=3269708>. For your convenience, we are now a designated site for your **2020 Census** online submission (through June 30). See details on page 25.

[Ask Us](#)



Mathematics – Math Emporium Lab (SW Campus)

For more information contact Renita Mitchell at 210-486-2607.

Event: Math Emporium – Math Bridge (Spring Hours)

Date/Time: Monday 9:00 am – 5:00 pm
 Tuesday, Thursday 9:00 am – 8:00 pm
 Wednesday 11:00 am – 8:00 pm
 Thursday 9:00 am – 8:00 pm
 Friday (By appointment only)
 Saturday 8:00 am – 1:00 pm

Location: Multi-Disciplinary Instructional Center (MDIC), Bldg. 3, Room 114

Summary: At the Math Emporium open learning lab, we help students get through their courses and understand math. Tutoring is available for students in all developmental MATH courses, as well as MATH 1332, 1314, 1414, 1350 and 1351. For more information contact Paula Englebert (210-486-7241), or visit <https://www.alamo.edu/spc/academics/academic-resources/tutoring-centers/mathemporium/>.



Military Support Services (Offices at Military Installations)

For more information contact Betsy Hamilton at 210-486-2610.

Event: Military-to-Civilian Resumé Writing - No-Cost Workshop

Date/Time: March 3 11:30 am – 12:30 pm

Location: Industrial Technology Center (ITC), Bldg. 1, Room C-123

Summary: If you're a military or veteran student who would like to learn some tools to help craft a resumé civilian employers will understand and value, please join us! Call to register (210-486-2610). Enjoy a free pizza lunch. Space is limited.



NAHB National Outstanding Student Chapter Award, International Builders' Show (IBS), Feb. 2020.

Pictured from left, Jacob VanHook, Ernest Anzures, Gilbert Noriega, Sandra Vasquez (2019 NAHB Outstanding Student Member), and Gisselle Vasquez.

ROAD CLOSURES:

St. Philip's College-Southwest Campus is experiencing growth!

Find all of the latest updates for MLK and SWC at

<https://www.alamo.edu/spc/cip>.

- **Road closures** – Harmon Ave. (off Quintana Rd.) from Feb. 26 - March 12. This will affect the primary entryway into Southwest Campus. All traffic must enter and exit at the Dunton St. intersection.
- VIA bus stop will temporarily change to the front of Bldg. 8 on Norton St.



St. Philip's Early College High School Earns 'A' Rating from the Texas Education Agency (TEA)

AlamoPROMISE Workshops - Complete your steps by March 20!

Contact Us: Admissions, Business Office, Student Financial Aid at 210-21ALAMO (210-212-5266), or call Toll Free at 1-844-20ALAMO (1-844-202-5266).

The AlamoPROMISE Scholar Program makes college more accessible to graduating seniors by providing the support necessary to earn a certificate or associate's degree at one of the five Alamo Colleges: Northeast Lakeview College, Northwest Vista College, Palo Alto College, San Antonio College, and St. Philip's College.



It is our goal to allow as many eligible students as possible to take advantage of the exceptional opportunity offered by AlamoPROMISE, and we understand that completing these two steps takes time. **To allow for this, we have set a new deadline for completing these last two steps — midnight, March 20, 2020.**

1. (The period for new "Save Your Seat" application is closed.)
2. File for Financial Aid (Free application for FAFSA or TASFA) by March 20
3. Apply to an ACD College (www.applytexas.org) by March 20



Completing these steps ensures that tuition and mandatory fees at the Alamo Colleges are covered for Bexar County students who graduate from participating high schools. As last-dollar funding, AlamoPROMISE covers the gap between financial aid and the cost of tuition for up to three years. Your household income does not disqualify you and because we know plans sometimes change, you are not locked into a commitment.

Need assistance? We are here to help: **St. Philip's College** (210-486-2150), spc-recruit@alamo.edu. Learn more at <https://www.alamo.edu/promise/>, or email the **AlamoPROMISE team** at Promise@alamo.edu for assistance.

Student Financial Services (SW Campus)

For more information contact Grace Zapata 210-486-2269.

Event: Spring Hours

Date/Time: Monday, Tuesday, Thursday 8:30 am – 12:30 pm
Wednesday 3:00 pm – 7:00 pm

Location: Industrial Technology Center (ITC), Bldg. 1, Room B-172

Summary: Stop by to see Marion Perez (210-486-7039) at SWC.

College Connection Financial Aid Saturdays are held at the MLK Campus only (Welcome Center, 106). Students needing assistance completing the FAFSA/TASFA are invited to attend. See session dates in red.

- Students must complete the Apply Texas Application before submitting FAFSA/TASFA
- Students/Parents must use their 2017 income tax to apply for the 2019-2020 FAFSA/TASFA (Spring 2020 and Summer 2020)
- Students/Parents must use their 2018 income tax to apply for the 2020-2021 FAFSA/TASFA (Fall 2020)

ALAMO COLLEGES DISTRICT

COLLEGE CONNECTION

FINANCIAL AID SATURDAYS

Let us help you complete a FAFSA or TASFA!

SESSIONS | 9:00 AM - 1:00 PM

OCT	NOV	DEC	FEB	MAR	APR	MAY
5	2	7	1	7	4	2

Students are encouraged to complete the ApplyTexas Application before submitting a FAFSA/TASFA.

*Ensure information submitted on both FAFSA or TASFA match the ApplyTexas Application.

*Students/Parents must use their 2018 Tax Return and/or 2018 Untaxed Income information to complete the 2020 - 2021 FAFSA/TASFA.

alamo.edu/collegeconnection

SESSIONS ARE HELD AT ALL 5 COLLEGES!

 Northeast Lakeview College 1201 Kitty Hawk Rd. Universal City, TX 78148 (210) 484-5103 alamo.edu/nlc Financial Aid Office (210) 212-5266	 Northwest Vista College 3535 N. Ellison Dr. San Antonio, TX 78251 (210) 484-4300 alamo.edu/nvc Financial Aid Office (210) 212-5266	 Palo Alto College 1400 W. Wilbarger Blvd. San Antonio, TX 78224 (210) 484-1300 alamo.edu/pac Financial Aid Office (210) 212-5266	 St. Philip's College 1801 Martin Luther King Dr. San Antonio, TX 78203 (210) 484-3100 alamo.edu/spc Financial Aid Office (210) 212-5266	 San Antonio College 1819 N. Main Ave. San Antonio, TX 78212 (210) 484-5046 alamo.edu/sac Financial Aid Office (210) 212-5266
---	---	---	--	---

Log into ACES or contact your college Student Financial Aid office
alamo.edu/district/financial-aid

09/19

For more **Financial Aid news** call 210-21ALAMO (210-212-5266), or call Toll Free at 1-844-20ALAMO (1-844-202-5266), email dst-sfs@alamo.edu, or visit <https://www.alamo.edu/spc/admissions/pay-for-college/financial-aid/>. Please have or include your Banner ID when calling or emailing.

DREAMers: Complete the **TASFA** (Texas Application for State Financial Aid) today. Need assistance applying for college, state aid or scholarships? Our staff can assist you at these Community Education Training Centers:

Brackenridge (Eastside) Center, 532 N. Center (78202), 210-485-0280

Harlandale (Southside) Center, 901 March Avenue (78214), 210-989-5999

www.alamo.edu/district/etc

www.alamo.edu/district/daca

Student Life (SW Campus)

For more information contact Paul Lede at 210-486-2581.

Event: Celebrate our 122nd Anniversary

Date/Time: March 2 11:00 am – 1:00 pm

Location: Industrial Technology Center (ITC), Bldg. 1, Crossroads

Summary: Celebrate 122 years of service to the community!

Event: Spirit Day with Birthday Cake

Date/Time: March 4 11:00 am – 1:00 pm

Location: Industrial Technology Center (ITC), Bldg. 1, Crossroads

Summary: Wear your favorite St. Philip's shirt or wear our school colors - royal blue and white.

Event: Spirit Day

Date/Time: March 11, 18, and 25 11:00 am – 1:00 pm

Location: Industrial Technology Center (ITC), Bldg. 1, Crossroads

Summary: Wear your favorite St. Philip's shirt or wear school colors – royal blue and white.

Event: Lunch and Lead Session

Date/Time: March 19 12:00 pm – 1:00 pm

Location: Industrial Technology Center (ITC), Bldg. 1, Room C210

Summary: Come join us for an engaging hour of leadership, event planning support, and essential updates from the Department of Student Life. Lunch will be provided.

Event: Spring Flex II Welcome Table

Date/Time: March 23 and 24 7:00 am – 6:00 pm

Location: Industrial Technology Center (ITC), Bldg. 1, Crossroads

Summary: The Department of Student Life will assist in printing schedules, giving directions and maps, and provide snacks under at the welcome table.

Event: Blood Drive – South Texas Blood and Tissue Center

Date/Time: March 23 and 24 9:00 am – 5:00 pm

Location: Industrial Technology Center (ITC), Bldg. 1, Tiger Bistro

Summary: Come give blood for a worthy cause.

Event: Men of SPC Basketball Social

Date/Time: March 26 6:30 pm – 9:00 pm

Location: Industrial Technology Center (ITC), Bldg. 1, Tiger Bistro

Summary: Watch the Spurs game, enjoy the meal, and hang out with SPC faculty, staff, and students.



Katherine Johnson (1918-2020)
African-American NASA
Mathematician, American Hero

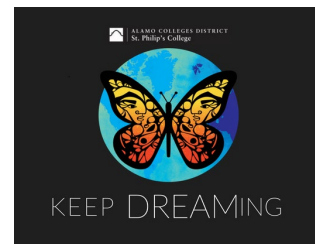
**Women's History Month
March 2020**



Tutoring Services & Service Learning (SW Campus)

For more information contact Elizabeth Castillo at 210-486-2473.

DACA Allies - Find more resources (such as access to scholarships and legal assistance) for **Deferred Action for Childhood Arrivals (DACA)** at <https://www.alamo.edu/spc/admissions/specific-populations/daca/>, or speak confidentially to District Coordinator Carmen de Luna-Jones (210-485-2080), SPC Director Liz Castillo (210-486-2473), or SPC Counselor Rosalinda Rivas (210-486-2117).



Event: Tiger Commit to Complete
Date/Time: March 4 11:00 am – 2:00 pm
Location: Industrial Technology Center (ITC), Bldg. 1, Crossroads
Summary: Come learn about campus and community resources dedicated to helping you complete your program of study, eat some great food, and put together a team for our Lego competition!



Financial Literacy Program

Event: Free Online Financial Coaching
Date/Time: By appointment
Location: <https://www.aie.org/coaching/>
Summary: This free service, in partnership with Trellis, is designed to help you make smart financial decisions. For more information contact Enida Rehome (210-486-2140).

Event: Credit Human Workshop
Date/Time: March 5 12:00 am – 1:00 pm
Location: Industrial Technology Center (ITC), Bldg. 1, Tiger Bistro
Summary: Learn about repayment options. For more information contact Enida Rehome (210-486-2140).

Event: Student Loan Workshop – You’ve Got This!
Date/Time: March 26 12:00 am – 1:00 pm
Location: Industrial Technology Center (ITC), Bldg. 1, Tiger Bistro
Summary: Learn about repayment options. For more information contact Enida Rehome (210-486-2140).



Tutoring Services and Perpetual Book Loan Program

Event: General tutoring, a great place to study, and free Book Loan Program!
Date/Time: Tuesday, Thursday 10:00 am – 12:00 pm, and 1:00 pm – 4:00 pm
Location: Industrial Technology Center (ITC), Bldg. 1, Library, Room C-123N
Summary: Tutoring in speech, history, business, accounting (I and II) and Spanish. Call 210-486-2527, or visit <https://www.alamo.edu/spc/academics/academic-resources/tutoring-centers/tutoring-and-technology-center/>.

The Perpetual Book Loan Program is offered year-round and is available via online reservations at <https://www.alamo.edu/spc/experience-spc/current-students/student-resources/book-loan-program/>. For more information contact Liz Castillo (210-486-2473).



2020 Census (MLK Campus, SW Campus, and Off-Site)

For more information visit <https://www.sabexarcourtmein.org/> or <https://2020census.gov/en.html>.



Event: Complete your 2020 Census Online (Count Me In – Cuenta Conmigo)

Date/Time: March 12 – June 30

Monday – Friday 8:00 am – 5:00 pm

Locations: MLK Campus: Center for Learning Resources (CLR), Library, 2nd floor Open Computer Lab

SW Campus: Industrial Technology Center (ITC), Bldg. 1, Library C-123L, Computer Lab

Off-Site: Good Samaritan Veteran Outreach & Transition Center (GSVOTC), Computer Lab (202 Connelly St., 78203)

Summary: Starting in March 2020, homes across the country will begin receiving invitations to complete the 2020 Census. Once the invitation arrives, you should respond for your home in one of three ways: online, by phone, or by mail. The invitation will have a personalized access code, which you can use to respond to the census online. For your convenience, St. Philip’s College has designated three computer labs for completing and submitting the Census online. **Census Day (April 1)** is observed nationwide. When you respond to the census, you’ll tell the U.S. Census Bureau where you live as of April 1, 2020. Census takers will begin visiting homes that haven’t responded to the 2020 Census to help make sure everyone is counted (May-July).

Veterans Affairs (SW Campus)

For more information contact Veronica Griego at 210-486-2540.



We are dedicated to providing the highest quality and comprehensive support to student veterans and their family members in an atmosphere that provides commitment, respect, and academic excellence. The Veterans Affairs office assists students by providing certification of courses and transmitting enrollment information to the Department of Veteran Affairs. For more information contact Veronica Griego (210-486-2540).

If you receive GI Bill Educational Benefits and are certified at least $\frac{3}{4}$ time, you could be eligible to work for the Veterans Affairs office. The federal work study positions have flexible work schedules. To apply, call 210-486-2111. View important information, resources and explore links on our website at <https://www.alamo.edu/spc/admissions/specific-populations/military-dependents/veteran-affairs/>.

Veterans Affairs	Tony Gable	lgable@alamo.edu	210-486-2521
Certified Academic Advisors:	Alicia Stolte	astolte2@alamo.edu	210-486-2539
	Vincent Garcia	vgarcia365@alamo.edu	210-486-2522

Event: Spring Hours at SWC

Date/Time: Tuesdays 9:00 am – 2:00 pm

Location: Industrial Technology Center (ITC), Bldg. 1, Room B-172

Summary: Stop by to see the VA Certified Academic Advisors at SWC who can assist students by providing certification of courses and transmitting enrollment information to the Department of Veteran Affairs.

Workforce Training Network (SW Campus)

For more information contact Alfred Landeros at 210-486-7082.

Event: Workforce Training and Certifications

Location: Industrial Technology Center (ITC), Bldg. 1, Room D-116D

Summary: We offer non-degree courses, certificates, and industry specific certifications. To learn more about career, job training and continuing education that can meet your goals contact Alfred Landeros (210-486-7082), stop by or visit <https://www.alamo.edu/spc/academics/wtn/>.

Workforce Solutions Alamo (SW Campus)

For more information contact Rosie Maldonado at 210-582-1826.



Event: American Job Center - We Help with Employment Information and Opportunities

Date/Time: Wednesday, Thursday 8:00 am – 5:00 pm

Location: Industrial Technology Center (ITC), Bldg. 1, Room D-109

Summary: A case manager is available two days per week to assist students with childcare services, internships, job search skills, and employment opportunities in the occupational fields of Information Technology, Advanced Manufacturing, Health and Construction. We also host career fairs on both campuses. We are here to help. For more information see Susan Vasquez, Case Manager (210-486-7008), or visit <https://www.workforcesolutionsalamo.org/>.

Central Texas Technology Center (Off-Site)

For more information contact Janice Roth at 210-486-7410 (or 1-830-609-2106).

The CTTC provides higher education and technical skills training to promote employment opportunities in high demand occupations. We are located at 2189 FM-758, New Braunfels, TX (78130). For more information visit <https://www.alamo.edu/cttc/central-texas-technology-center/>.

Programs include Vocational Nursing (SPC Off-Site); Economic and Workforce Development (Advanced Manufacturing & Logistics, Health & Biosciences, and Science & Technology); Integrated Basic Education Skills Training; Review the Spring 2020 Course Schedule at <https://www.alamo.edu/cttc/course-scheduleregister/>, or contact our Advisors at 210-486-7400.



Deferred Action (Off-Site)

For more information contact Carmen De Luna-Jones at 210-485-0280.

Special populations: In effort to provide access to higher education for the entire community, Alamo Colleges District offers programs and support services to help individuals from all walks of life achieve their dreams by way of earning a degree.

To locate resources on immigrant rights to advocate for yourself and protect your community, visit <https://www.alamo.edu/spc/admissions/specific-populations/daca/>. View an important immigrant's training video, "Know Your Rights & Family Preparedness". The video can also be viewed in Spanish.



What should I do if I believe an enforcement action has taken place that is inconsistent with this guidance?

DHS has explained that there are a number of locations where an individual may lodge a complaint with DHS about a particular immigration enforcement action that may have taken place in violation of these or other policies. You may find information about these locations, and information about how to file a complaint, on the DHS website at <https://www.dhs.gov/>, the CBP website at <https://www.cbp.gov/>, or ICE website at <https://www.ice.gov/>.

Deferred Action (continued)

For more information contact Carmen De Luna-Jones at 210-485-0280.

You may contact ICE Enforcement and Removal Operations (ERO) through the Detention Reporting and Information Line (888-351-4024), the local ERO office: San Antonio Field Office (210-283-4750), or the online form at <https://www.ice.gov/webform/ero-contact-form>. The Civil Liberties Division of the ICE Office of Diversity and Civil Rights may be contacted at 202-732-0092 or ICE.Civil.Liberties@ice.dhs.gov.



DREAMers
Need Assistance Applying for State Aid?
Texas Application for State Financial Aid
(TASFA)



Call the Community Education & Training Centers near you to schedule an appointment at:

Brackenridge (Eastside) Center	Harlandale (Southside) Center
532 N. Center San Antonio, TX 78202 (210) 485-0280	901 March Avenue San Antonio, TX 78214 (210) 989-5999

www.alamo.edu/district/etc
www.alamo.edu/district/daca

The Alamo Colleges District does not discriminate on the basis of race, ethnicity, gender, national or origin, religion, age, disability, sexual orientation, gender identity or expression, marital status, or pregnancy. Any individual who believes they have been discriminated against on the basis of race, ethnicity, gender, national or origin, religion, age, disability, sexual orientation, gender identity or expression, marital status, or pregnancy should contact the District's Office of Diversity and Civil Rights at 210-485-0280 or 210-989-5999.



You may contact the CBP Information Center to file a complaint or compliment via phone at 877-227-5511, or submit an email through the website at <https://help.cbp.gov>.

Where should I report discrimination if I believe it is taking place in my school? Anyone with information about discrimination occurring in schools, including discrimination on the basis of race, color, or national origin (which may include citizenship or immigration status), may file a complaint by contacting the U.S. Department of Education, Office for Civil Rights via <https://www.state.gov/s/ocr/>, 800-421-3481 or TDD: 800-877-8339 (for language assistance contact 800-USA-LEARN {800-872-5327}) or by contacting the U.S. Department of Justice, Civil Rights Division, Educational Opportunities Section via <https://www.justice.gov/crt/educational-opportunities-section>, 877-292-3804, or TTY: 800-514-0383.

Will enforcement actions ever occur at sensitive locations? DHS has explained that

immigration enforcement actions may occur at sensitive locations in limited circumstances, but should generally be avoided. DHS officers and agents from U.S. Immigration and Customs Enforcement (ICE) or U.S. Customs and Border Protection (CBP) may conduct an enforcement action at a sensitive location only with prior approval from an appropriate supervisory DHS official, or if the enforcement action involves exigent circumstances related to national security, terrorism, or public safety, or where there is imminent risk of destruction of evidence material to an ongoing criminal case.

Brackenridge & Harlandale Education Centers
For information on IME BECAS Scholarships
Call (210) 485-0280 or (210) 989-5999

Alamo Colleges Foundation - DREAMers SCHOLARSHIP

The 2020 – 2021 Scholarship Application is online at www.alamo.edu/foundation/scholarships. DREAMers submit the application online, and retain the application number given to you for use on the Certification form. Submit the Scholarship Certification form to BETC before the deadline. For more information call Carmen De Luna Jones (210-486-0280).

Application Priority Deadline: March 29, 2020
Application Final Deadline: September 6, 2020



UTSA Dreamers Resource Center (Student Center for Community Engagement and Inclusion)

The **UTSA Dreamer Resource Center** is celebrating its second anniversary! The Center provides support services to Dreamers in navigating academic, mental health and legal resources. Call 210-458-7777, email dreamers@utsa.edu, or visit https://www.utsa.edu/dreamers/about/index.html?mc_cid=87f9bf2c86&mc_eid=0498ef8875.

International Programs – Study Abroad

Fund your Study Abroad with a Gilman Scholarship! Begin your application today. Remember that you must select your home college and your home campus financial aid advisor as follows:

St. Philip's College - Nora Uribe (210-486-2268)

Scholarship deadline: March 3

<https://gilmanapplication.iie.org>

For more information call International Programs (210-485-0084), or visit us at <https://alamo-sa.terradotta.com/>.



FACT SHEET FOR FAMILIES AND SCHOOL STAFF: LIMITATIONS ON DHS IMMIGRATION ENFORCEMENT ACTIONS AT SENSITIVE LOCATIONS

All children have a right to a free public education, regardless of their actual or perceived immigration or citizenship status or that of their parents.¹ Education leaders, teachers, students, and families, have asked questions about guidance that was released by the U.S. Department of Homeland Security (DHS) that limits immigration enforcement actions from occurring at schools and other “sensitive locations.” This DHS guidance is at: <https://www.cbp.gov/border-security/sensitive-locations-faqs>. To respond to those questions, the U.S. Department of Education has worked with DHS to prepare this fact sheet, intended to help parents, families, educators, and other school staff understand the DHS guidance.

In general, DHS has explained that immigration enforcement actions may not occur at or in “sensitive locations.”

These locations include:



Schools, such as known and licensed daycares, pre-schools and other early learning programs; primary schools; secondary schools; post-secondary schools up to and including colleges and universities; as well as scholastic or education-related activities or events.



School bus stops that are marked and/or known to the officer, during periods when children are present at the stop.



Medical treatment and health care facilities, such as hospitals, doctors' offices, accredited health clinics, and emergent or urgent care facilities.



Places of worship, such as churches, synagogues, mosques, and temples.



Religious or civil ceremonies or observances, such as funerals and weddings.



During public demonstrations, such as a march, rally, or parade.

Scholarships and Giving Back Opportunities

Student Engagement Grants (SEG): Are you a full-time student? Do you have a GPA of 2.5 or higher? If so, you may qualify for a **\$1,000 Student Engagement Scholarship**. Students awarded this scholarship will participate in the **QEP Ethical Decision-Making Reading Buddies at Bowden Academy**. To apply: <https://www.alamo.edu/spc/admissions/pay-for-college/scholarships/seg/> or turn in application in SLC 219. For more information contact Irene Young at 210-486-2391, or email at iyoung@alamo.edu.

SEG Projects: Other grant projects are Allied Construction Technology (ACT) Community Service, Alamo Institute Student Leaders, Biology Research Project, Byrd Sanctuary Peer Tutors, Campus Tour Leaders, Collegiate 100, Cyber Tigers, Disability Services Peer Provider, Extramurals Sports Program, Jessica's Project, Middle College Project, Peer Mentor Tutoring-Reading & Writing, QEP (What Would You Do?), SPC Community Garden, Spirit & Pride Crew, STEM Advocates, Stinson Air Museum, Student Government Association (SGA), Tiger PAWS (Personal Academic Writing Space), and Volunteer Income Tax Assistance (VITA). For more information visit <https://www.alamo.edu/spc/admissions/pay-for-college/scholarships/seg/> and connect with the various Project Managers.

SPC Scholarship Office

For more information contact Gloria Hernandez at 210-486-2498.

St. Philip's College Scholarships: All students are encouraged to apply online at <https://www.alamo.edu/about-us/offices-departments/departments/foundation/students/>.

Priority Deadline: March 29, 2020

Scholarship Amount: Varies

Final Deadline: September 6, 2020

Harvey Najim Pathways: Must be graduating from a high school in one of these ISD's: East Central, Edgewood, Harlandale, San Antonio, South San, Southside, Southwest, or Somerset. Pursue degree in Cyber-Security, Information Technology, Nursing, or Respiratory Care. Come by the Scholarship Office, Sutton Learning Center (SLC), Room 319E, for application. For more information call Gloria Hernandez (210-486-2498).

Deadline: N/A

Scholarship Amount: \$2,500

San Antonio Area Foundation – Robert B. Taylor Scholarship: Over 90 scholarships available. All students are encouraged to apply. Call 210-225-2243 or visit <http://saafdn.org/Scholarships/Welcome-Scholarship-Seekers>.

Deadline: N/A

Scholarship Amount: Varies

U.S. Congressman Lloyd Doggett Seeks Paid Interns for San Antonio District Office:

Applications for paid Spring 2020 Internships are being accepted now and will be considered on a rolling basis. Those interested in an internship should submit a resume, cover letter, and a list of three professional references via email to brendan.kennedy@mail.house.gov. **No calls or drop-ins.**

College for All Texans: Educational Aid Exemption Application

For more information, contact Alan David Ahmad at 210-485-0613.

The **EAE** is available to eligible students taking courses toward teacher certification and pays for the tuition and required fees for said coursework in the semester for which it was applied. The **Advisor-Cert-Form** is also available in the Student Financial Services office on your campus. Visit <http://www.collegeforalltexans.com/apps/financialaid/tofa2.cfm?ID=572>.



White House Initiative on Historically Black Colleges and Universities

U.S. Department of Education

The White House Initiative on Historically Black Colleges and Universities offers full-time internships year-round (spring, summer, and fall). Part-time applicants who can commit to at least 20 hours a week will be considered, although the Initiative prioritizes full-time applicants (32-40 hours a week). Internships are available in Washington D.C. at the U.S. Department of Education, Initiative headquarters.

How to Apply: Visit the [Department of Education's Internship page](#) for detailed instructions and the application.

- **Fall Deadline – July 15**
Dates of program: September through December
- **Winter/Spring Deadline – October 1**
Dates of program: January through May
- **Summer Deadline – March 15**
Dates of program: May/June through July/August

Join us at Viva Science SA in April!

**Music *Food Trucks *Ice Cream*

Free Event. For more information call Marcus Webster (210-567-3708), or via email at websterm@uthscsa.edu.



iVIVA SCIENCE! SA

Saturday, April 18, 2020
9 a.m. to 3 p.m.
The Witte Museum
3801 Broadway St, San Antonio, TX 78209

A FREE AND FAMILY-FRIENDLY EVENT

- Interactive Science Booths With Fun Activities
- Delicious Food Trucks
- Science Themed Artwork
- Poster Session With Research From Local Scientists
- Science Talks

UT Health San Antonio Graduate School of Biomedical Sciences

FEDERAL SECTOR INTERNSHIPS HACU NATIONAL INTERNSHIP PROGRAM Work in Major U.S. Cities Gain Real World Experience		Paid Internships for all Majors. Work in Washington, D.C. or other major cities.
To learn more, contact our Washington D.C. office at 202-467-0893, or visit www.hacu.net/hnip .	Apply online at https://www.hacu.net/hacu/Apply_Online.asp .	
Eligibility <ul style="list-style-type: none"> • Be enrolled in a degree-seeking program • Must be an undergraduate who has completed freshman year • 3.0 GPA recommended • Be authorized or eligible to work by law in the U.S. • Completion of freshman year in college before the internship begins 	Sessions Spring 2020: Summer 2020: Fall 2020:	Deadlines November 15, 2019* February 14, 2020 June 5, 2020 <i>*Extended date</i>



The Public Charge Rule took effect Feb. 24, 2020

The Public Charge rule took effect February 24th for all green card applications. It is important to

remember a few important things about this rule:

1. The rule doesn't affect everyone, **only** those who are applying for a green card through a family member or employer, or applying for certain non-immigrant visas.
2. The rule **does not affect people** who already have green cards, applying for citizenship, are refugees or asylees, have VAWA status, U or T visa status. If you already have a green card or if you are applying for citizenship this new rule will not affect you.
3. The new rule adds certain public benefits to consideration when applying for a green card. The **benefits that USCIS will look at** are: TANF, Social Security Supplemental Income (SSI), food stamps (SNAP), Medicaid, Section 8 housing benefits, and subsidized housing. Benefits received by your U.S. citizen children will not count against you.
4. If the program is not on the list it is not considered under the new rule. Head Start, school lunch, WIC, immunizations, unemployment benefits, or tax credits, **are not benefits** that will automatically be weighed against you under this new rule.
5. There is a new form that will have to be included with your green card application. The new form asks for a lot of information about your household finances, your education, whether you have health insurance, and your credit history.
6. The rule took effect February 24, 2020, so if your application is on file before that time, the new rule won't apply to you. Any benefits you receive before February 24th won't count against you.

Immigrant Legal Resource Center (ILRC) is at <https://www.ilrc.org/>. For more information and resources in languages other than English visit the **Protecting Immigrant Families** webpage: https://protectingimmigrantfamilies.org/know-your-rights/?mc_cid=cc04aaefee&mc_eid=0498ef8875.

**LEARN ABOUT U.S. CITIZENSHIP
PREPARE FOR THE TEST**

Participants will develop English language skills and civics knowledge as well as learn about the N-400 Application for Naturalization Form and the naturalization interview.

**APRENDA SOBRE LA CIUDADANÍA
DE LOS ESTADOS UNIDOS
PREPÁRESE PARA EL EXAMEN**

Los participantes desarrollarán habilidades en el idioma inglés y conocimiento cívico, así como aprenderán sobre el Formulario de Solicitud de Naturalización N-400 y la entrevista de naturalización.

WORKSHOPS/TALLERES 6 P.M.-7:30 P.M.	COURSE/CURSO 9 A.M.-11 A.M.
TUESDAY, FEBRUARY 25, 2020	WEDNESDAY ONLY, MARCH 18-MAY 6, 2020
WEDNESDAY, MARCH 25, 2020	SWISD COMMUNITY EDUCATION BLDG, ROOM 15
WEDNESDAY, APRIL 22, 2020	11914 DRAGON LANE, SAN ANTONIO, TX 78252
CHRISTA MCAULIFFE MIDDLE SCHOOL	COURSE/CURSO 6 P.M.-8 P.M.
ROOM 211	TUESDAY ONLY, MARCH 3-APRIL 28, 2020
9390 SW LOOP 410	CHRISTA MCAULIFFE MIDDLE SCHOOL, ROOM 211
SAN ANTONIO, TX 78242	9390 SW LOOP 410, SAN ANTONIO, TX 78242

*SOUTHWEST ISD HOLIDAY CALENDAR OBSERVED.

Sign up today! ¡Inscríbese hoy!
Call 210-622-4345
or email: communityeducation@swisd.net

This educational opportunity is free of charge and open to the public.
Este oportunidad educativa es gratuita y abierta al público.

Southwest ISD Community Education
Email: communityeducation@swisd.net Telephone: 210-622-4345
website: www.swisd.net
11914 Dragon Lane, Building 502, Room 12
San Antonio, Texas 78252

Central Texas Office for Refugees launches new hotline for refugee services

The [Central Texas Office for Refugees](https://www.rstx.org/who-we-are/ctor.html?mc_cid=cc04aaefee&mc_eid=0498ef8875) (CTOR) launched a hotline to reach underserved refugee populations including Asylees, Cuban/Haitian entrants, and victims of human trafficking. The hotline was created to assist those who might be experiencing barriers to accessing critical services and is available in 5 languages. CTOR can help with food, medical care, cash assistance, housing, employment, English classes, transportation, and more. Visit https://www.rstx.org/who-we-are/ctor.html?mc_cid=cc04aaefee&mc_eid=0498ef8875.

To access the hotline call or text "Hello" to 844-286-7797 for locations and more information about CTOR programs. Phone support is available in English, Kinyarwanda, Nepali, Spanish, and Tigrinya. Text support is available in English and Spanish.