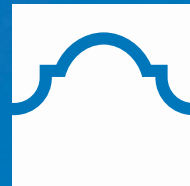


Expand Experiential Learning



ALAMO
COLLEGES
DISTRICT

Dr. Adelina Silva
Vice Chancellor for Student Success

Dr. Robert Garza
President, Palo Alto College



FY20 Budget Positioning For Smart Growth



Enrollment Management

Strategic Enrollment
Management Plan



Student Success

Student Success
Fund



Talent

Market
Competitiveness
& Retainment



Innovation

Participatory
Budgeting Fund

Experiential Learning Charge

Develop an Experiential Learning Model to set the standard for Experiential Learning at the Alamo Colleges District where every student will have an Experiential Learning experience by graduation.



Collaborative Work Session Summary



March 22

- Summary Report of 12/13/18
- Preliminary Guiding Principles
- Preliminary Definition

April 5

- EL Inventory List
- Guiding Principles
- Definition Development

April 17

- MyMAP Framework and EL
- Final Review: Definition, Guiding Principles

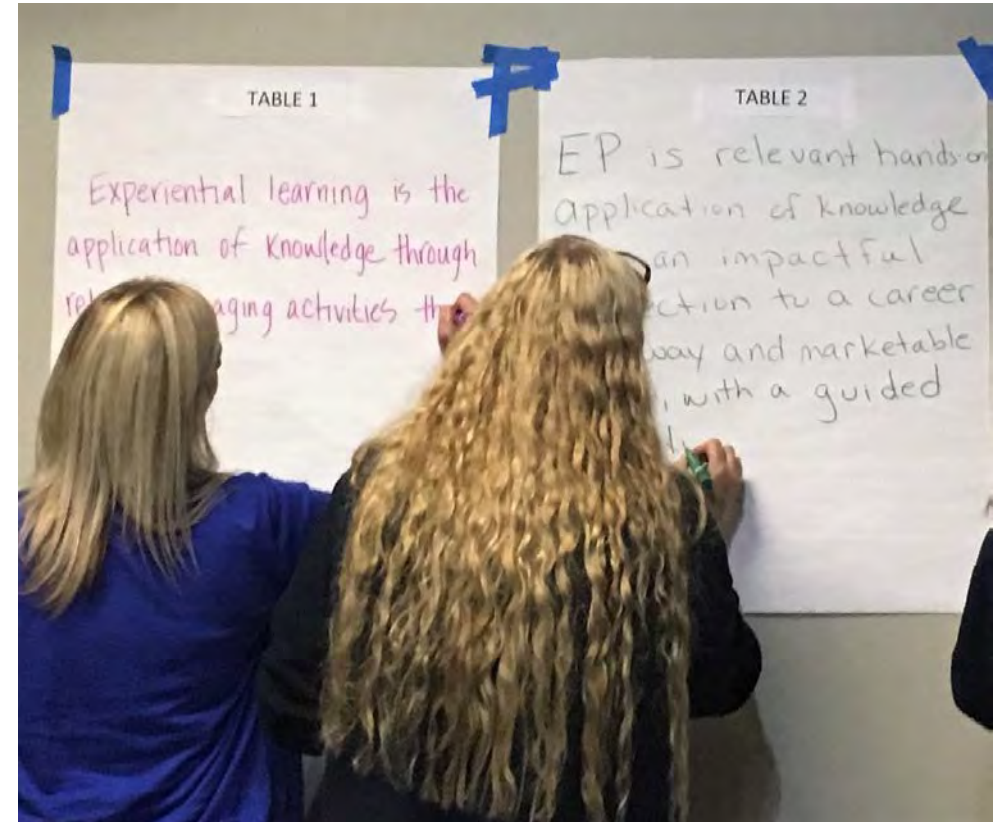


Experiential Learning Definition

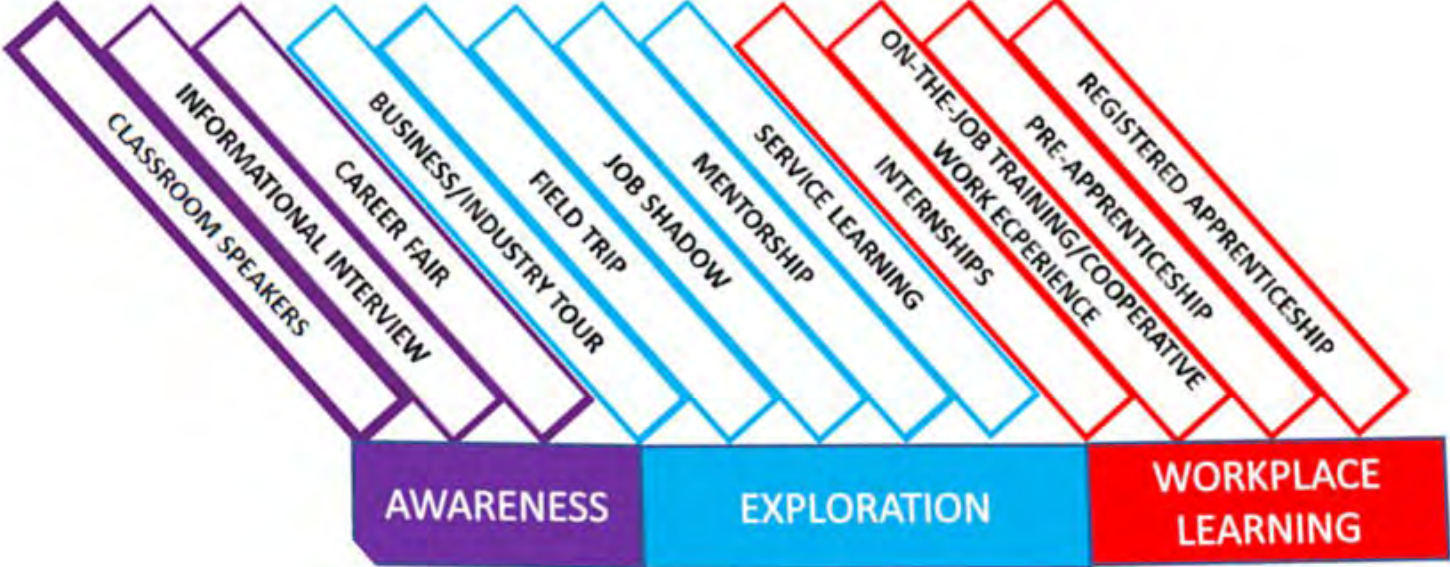


Experiential Learning is learning through experience integrated with the reflection of the application of knowledge in the experience that results in the development of new skills and/or new perspectives of thinking.

Final 06/20/2019



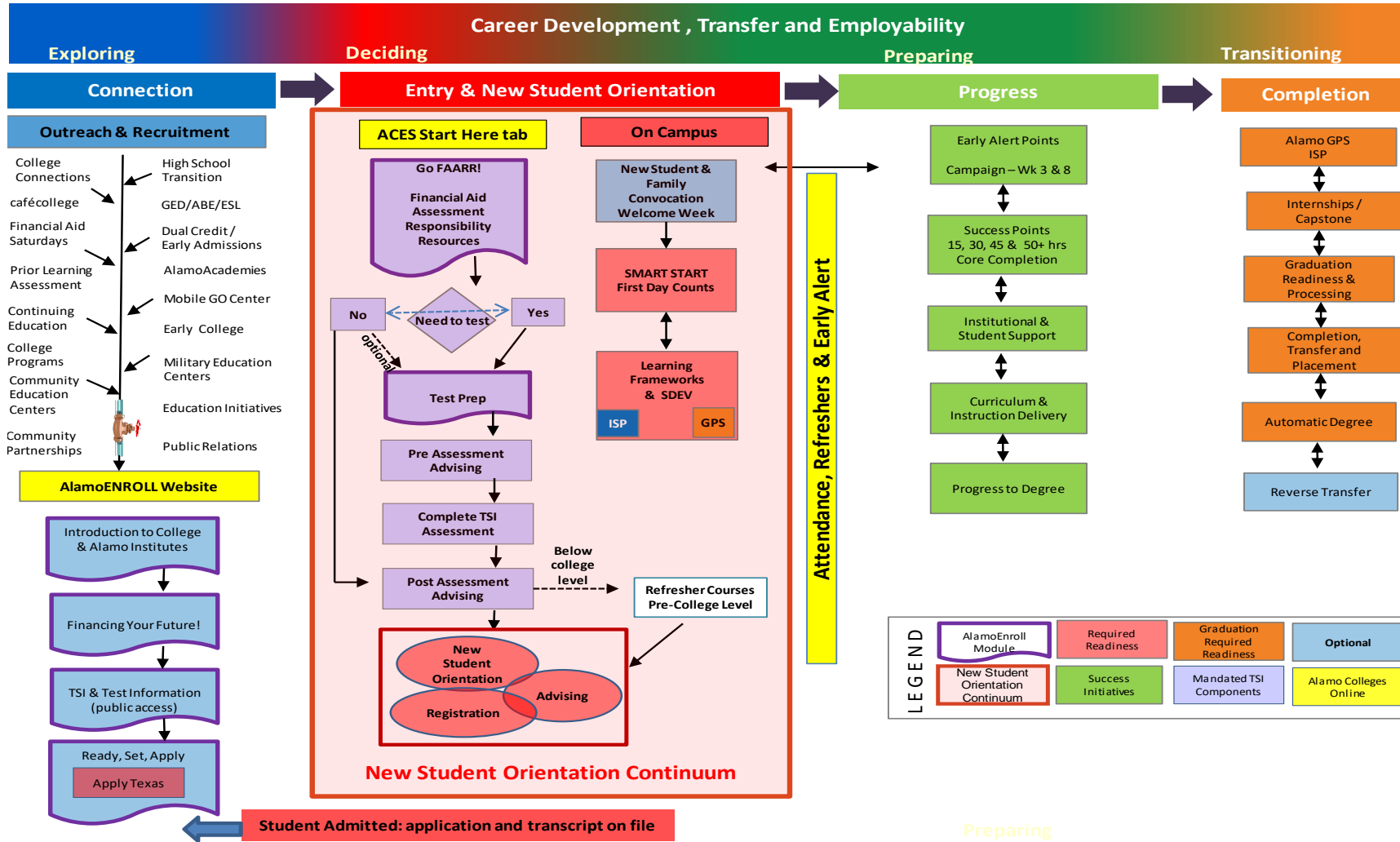
MyMAP Continuum



MyMAP



MyMAP

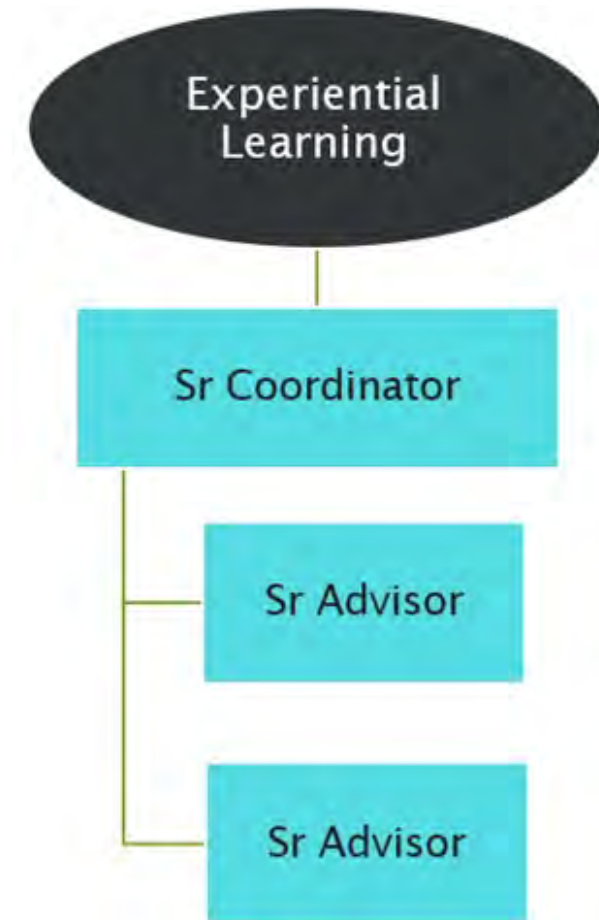


Proposed Experiential Learning Staffing Structure

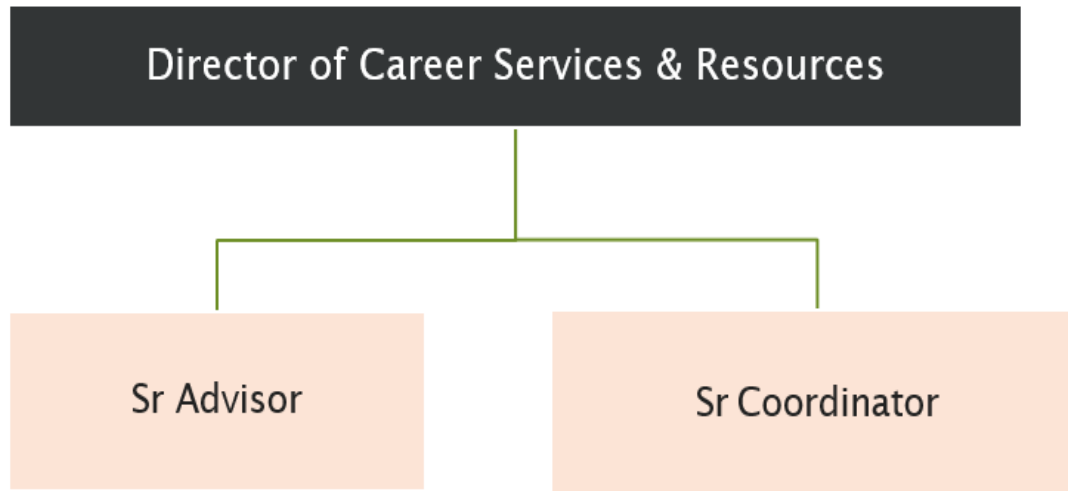
Colleges

Support of Experiential Learning

- **Funded by Student Activity Fees**
 - Senior Coordinator
 - Senior Advisor
 - Senior Advisor



Proposed Experiential Learning Staffing Structure



District Support Operations (DSO)

Coordination of Career Services & Experiential Learning

- Funded by Office of the Vice Chancellor for Student Success
 - Senior Coordinator (\$52,894)
 - Senior Advisor (\$38,875)

Total Budget Request for both positions (including benefits): \$145,000



Experiential Learning Timeline

- | | |
|-------------------------------------------------------------------------------------------------------------------------------------------------------------------------------------------------------------------------------------------------------------------------------------|-----------|
| · Introduction of EL Framework to BoT - Committee of the Whole | July 2019 |
| · EL Taskforce Work Sessions - Radical Innovation Process (RIP) Launch: <ul style="list-style-type: none">- Discovery: Model Development of EL Strategies & Learning Outcomes- Incubation: Proof of Concept- Acceleration: Scale for Excellence | Sep 2019 |
| · Introduction of EL Model to Student Focus Groups
(Staffing: Colleges, District Coordination, Student EL Work Study) | Fall 2019 |
| · EL Model to BoT | Dec 2019 |
| · Evaluation of Outcomes | Sept 2020 |



Thank you.

ACTION

Budget Approval of \$145,000 included
in Student Success Fund



ALAMO
COLLEGES
DISTRICT

