

Scobee Education Center
Santikos Micronaut Center Registration Form
2023-24



School Name: _____

ISD: _____

Lead **Teacher 1**: _____

Grade Level(s): PreK (4yr+) K 1 2 3 Teacher 1 Phone: _____

Teacher 1 e-mail: _____

Attending **Teacher 2**: _____ *(Optional)*

Grade Level(s): PreK (4yr+) K 1 2 3 Teacher 2 Phone: _____

Teacher 2 e-mail: _____

Total Number of Students (10-24): _____ Number of Teachers: _____

Anticipated Number of Parent Chaperones (*up to 10*): _____

Is this a TEA recognized Title I school? If scholarship funds are available, we wish to be considered for funding of the Micronaut programs requested. ___ Yes ___ No

Is your school a SAWS customer? ___ Yes ___ No

If Micronaut Scholarship funds from SAWS are available, do you wish to be considered for a scholarship? ___ Yes ___ No

Person to whom the Invoice/Fees for the missions/planetarium programs are to be addressed:

| | | | |
|------------------------------------|----------------|----------|--------------------------------|
| Name | e-mail Address | | |
| School/Organization Address: _____ | | | |
| Mailing Address | | | |
| City, | State | zip code | Organization Main Phone Number |

Teachers, please send your registration form(s) to the Scobee Education Center registration e-mail to be included on the calendar: sac-ScobeeCtr@alamo.edu

Staffing schedules make Fridays our first choice for Micronaut Missions in the new Santikos Micronaut Center. If you plan to have more than a single class attending missions on the same day, please, coordinate this request with a planetarium program or staggered times for arrival and departure for groups.

1st Choice Date: _____ 2nd Choice Date: _____ 3rd Choice Date: _____

Each Micronaut Mission is designed for a group of 12 to 24 students and a teacher. Up to 12 parents may attend as student assistants during the Micronaut mission. Students take part in a 90-minute briefing, launch, and space station simulation. Groups should plan to arrive at the center no less than 15 minutes prior to their start time. The fee for each Micronaut mission is \$375.

Planetarium programs are 25 to 40-minutes in length and are \$100/class, teachers & chaperones totaling no more than a group of 40 total. Larger than this size will require an additional payment of \$100 for up to 70 seats. The planetarium presentations are grade level specific and do not require a training session prior to attendance. Since these are shorter programs than missions, teachers are expected to schedule for lunch, snack or a classroom teacher designed activity in the balance of the time.

Special Needs: While the Scobee Education Center and Santikos Micronaut Center are ADA compliant, if members of your group require special assistance, the school is expected to provide the accommodations identified in the individual education plan for the student or employee. Please, contact our center in advance of your visit for specific accommodations during your visit.

Payment: The payment to the Scobee Education Center is to be provided when invoiced by the Alamo Colleges District. Most payments can be made online through the Invoice documents generated through the Alamo Colleges District. If an account for your ISD or organization is not already on file, we will need a copy of the W-9 form for your organization to create the invoice.

Cancellation/No Show: Cancellations must be received in writing through email or USPS mailing no less than two weeks prior to the scheduled visit. ***Cancellations within this two-week period will forfeit 20% of the collected costs.***

Lunches are not provided by the Scobee Education Center. Groups may conduct lunches on the terrace picnic tables, unless inclement weather requires an alternative indoor location. There is very limited indoor lunch access in the Santikos facility. Areas are provided on a first come first served basis. Please, plan accordingly for inclement weather. Many groups go to nearby San Pedro Springs public park for lunch and active play time after their Micronaut mission and planetarium programs. Check the city web site for more information.

Programming Options: (Select one from either group below.)

Smaller group/single activity options:

- 1 - Micronaut Mission Only
(12-24 students 4 yrs. or older and 1-3 teachers + up to 12 chaperones) \$375
- 1 - Planetarium + 1 Micronaut Mission
(12-24 students 4 yrs. or older + 1-3 teachers and up to 12 chaperones) \$475

Lead teachers bringing their classes to a Micronaut mission are required to attend pre-mission training. Optional teachers chaperoning the mission and planetarium programs do not require prior training.

Please contact our office for the most current workshop dates. 210-486-0100

***Pre-mission Notes:** Teachers are provided with content and activities that support the TEKS and consistently enrich the students experience when implemented prior to attending a mission. Additional pre-mission support may be provided on a limited basis via videoconferencing technology. This technology is being beta tested at our site during this coming school year.

Sample Schedule & Directions

A Typical Micronaut Schedules. Most Micronaut missions are scheduled without a planetarium program at 9:00am or 11:45am and will be held in the new Santikos Micronaut Center. **Times will vary if a planetarium program is included.**

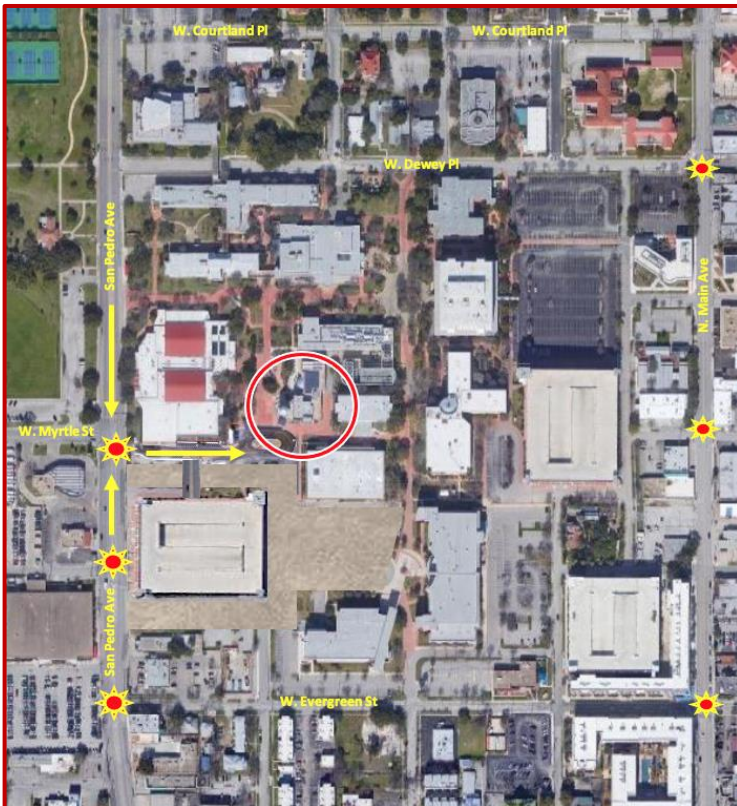
Lunches or Snacks may be held on the patio areas before or after the mission as discussed with the center scheduler. The Santikos Micronaut Center has a single bathroom unit accessed from the lobby.

SAMPLE SCHEDULE A:

9:00 – 10:30am -Micronaut mission
10:30 -11:00am-Transition to main building
11:00 -11:45pm- Planetarium Program
11:45-12:30pm- Classroom Teacher Lead Activity

SAMPLE SCHEDULE B:

9:00-9:45 Planetarium Program
9:50-10:20 Classroom Teacher Lead Activity
10:25-10:55 Transition to Santikos Micronaut Ctr
11:00-12:30pm Micronaut Mission



Directions:

Approach the San Antonio College campus from San Pedro Ave. for the western entrance into the campus and the traffic light for W. Myrtle St and the SAC circular roadway. Turn into campus at this light. After the turn, the new parking garage will be on your right and the gym on your left with Scobee's blue Cheever Star Tower ahead of you.

Bus/van Drivers:

A standard bus or school van may park along the curb in the designated areas after the garage entrance/exit. These areas are reserved for school bus and school van parking only.

If these curbs are blocked or unavailable, the driver may circle to the bus drop areas to unload students before parking in a designated bus area or exiting campus.

Please, indicate when confirming your programs if a teacher/chaperone is also the van or bus driver.

Parent Chaperones:

The free parking garage #3 from San Pedro Ave is the closest location for parking.

Parking on a college campus is always a challenge so plan to arrive early.

Do not park private vehicles on the curb of the circular drive.

You may wish to consider carpooling and parking on the upper levels of the free parking garages.